

O1 | FIRST FLOOR
4 BEDROOMS / 6.5 BATHS /
MEDIA ROOM / STAFF QUARTERS

FIRST FLOOR	SQ. FT.	SQ. M.
INTERIOR	2,020	188
EXTERIOR	1,943	181
TOTAL FIRST FLOOR	3,963	369

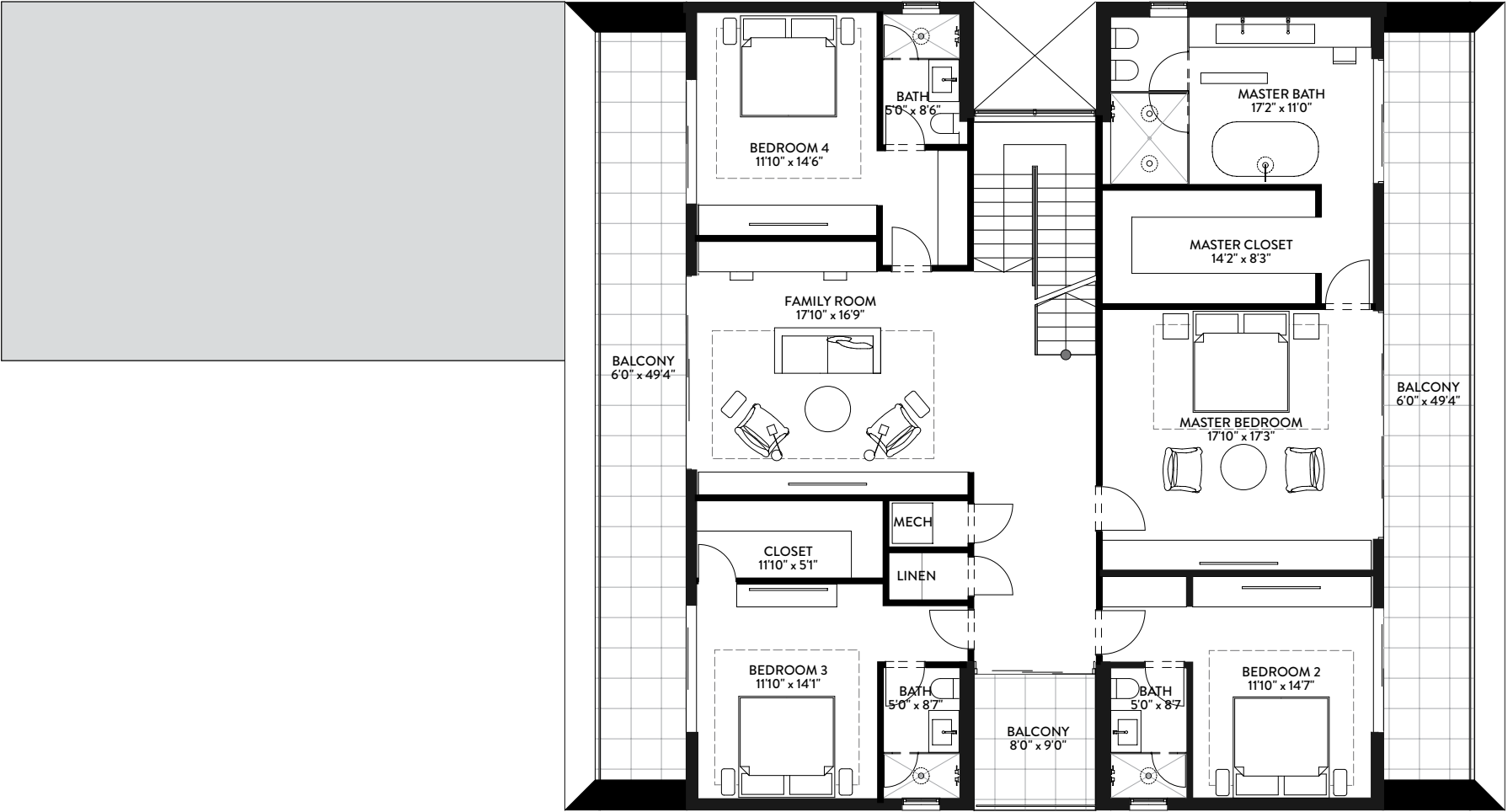
SECOND FLOOR	SQ. FT.	SQ. M.
INTERIOR	2,228	207
EXTERIOR	712	66
TOTAL SECOND FLOOR	2,940	273

TOTAL	SQ. FT.	SQ. M.
TOTAL INTERIOR	4,248	395
TOTAL EXTERIOR	2,655	247
TOTAL	6,903	642

BOTANIKO
WESTON



Stated dimensions are measured to the exterior boundaries of the exterior walls and the centerline of interior demising walls and in fact vary from the dimensions that would be determined by using the description and definition of the "Unit" set forth in the Declaration (which generally only includes the interior airspace between the perimeter walls and excludes interior structural components). Note that measurements of rooms set forth on this floor plan are generally taken at the greatest points of each given room (as if the room were a perfect rectangle), without regard for any cutouts. Accordingly, the area of the actual room will typically be smaller than the product obtained by multiplying the stated length times width. All dimensions are approximate and may vary with actual construction, and all floor plans and development plans are subject to change.



O1 | SECOND FLOOR
4 BEDROOMS / 6.5 BATHS /
MEDIA ROOM / STAFF QUARTERS

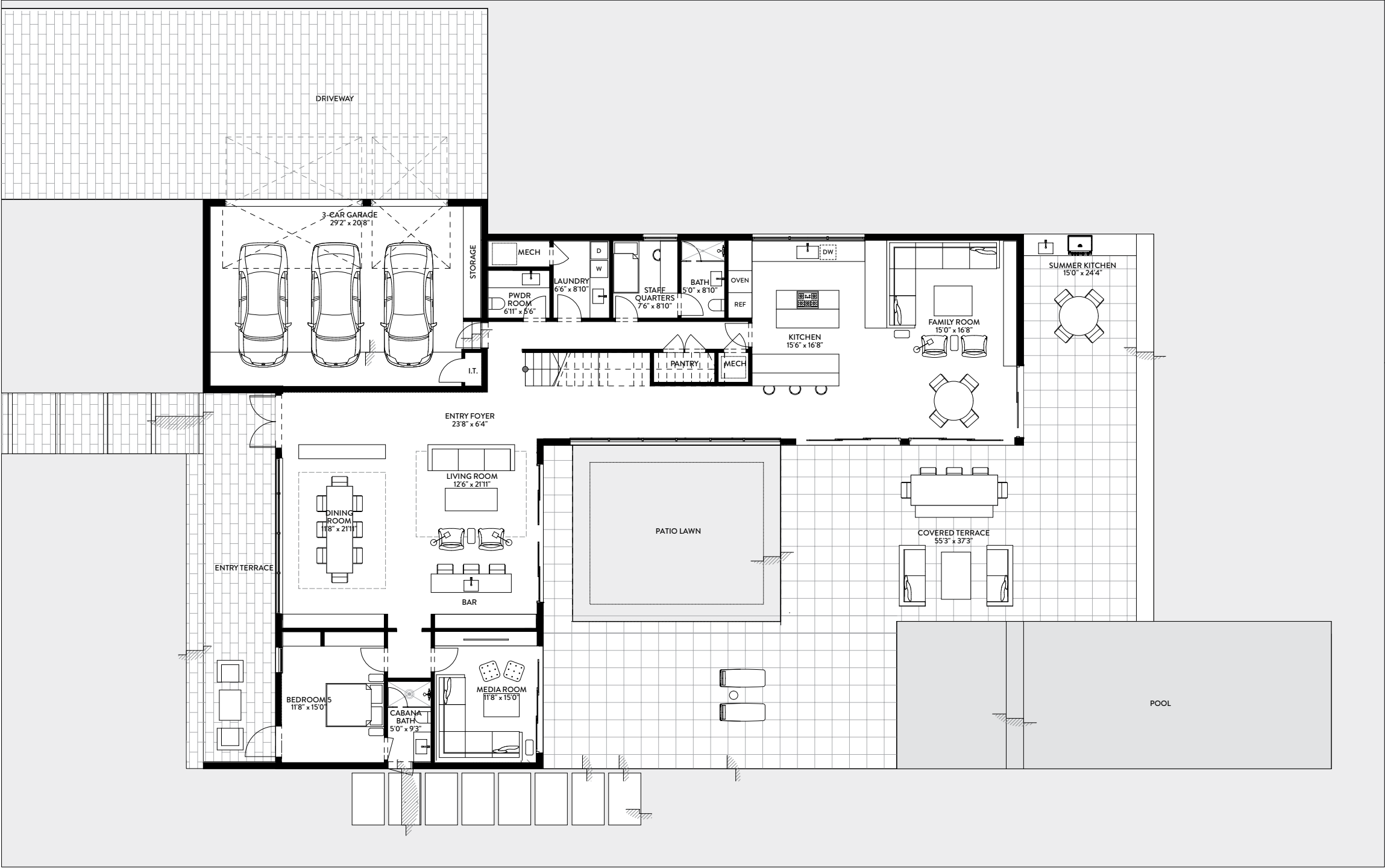
FIRST FLOOR	SQ. FT.	SQ. M.
INTERIOR	2,020	188
EXTERIOR	1,943	181
TOTAL FIRST FLOOR	3,963	369

SECOND FLOOR	SQ. FT.	SQ. M.
INTERIOR	2,228	207
EXTERIOR	712	66
TOTAL SECOND FLOOR	2,940	273

TOTAL	SQ. FT.	SQ. M.
TOTAL INTERIOR	4,248	395
TOTAL EXTERIOR	2,655	247
TOTAL	6,903	642

BOTANIKO
WESTON

Stated dimensions are measured to the exterior boundaries of the exterior walls and the centerline of interior demising walls and in fact vary from the dimensions that would be determined by using the description and definition of the "Unit" set forth in the Declaration (which generally only includes the interior airspace between the perimeter walls and excludes interior structural components). Note that measurements of rooms set forth on this floor plan are generally taken at the greatest points of each given room (as if the room were a perfect rectangle), without regard for any cutouts. Accordingly, the area of the actual room will typically be smaller than the product obtained by multiplying the stated length times width. All dimensions are approximate and may vary with actual construction, and all floor plans and development plans are subject to change.



O3 | FIRST FLOOR
5 BEDROOMS / 6.5 BATHS /
MEDIA ROOM / STAFF QUARTERS

FIRST FLOOR	SQ. FT.	SQ. M.
INTERIOR	2,831	263
EXTERIOR	2,539	236
TOTAL FIRST FLOOR	5,370	499

SECOND FLOOR	SQ. FT.	SQ. M.
INTERIOR	2,644	246
EXTERIOR	686	64
TOTAL SECOND FLOOR	3,330	310

TOTAL	SQ. FT.	SQ. M.
TOTAL INTERIOR	5,475	509
TOTAL EXTERIOR	3,225	300
TOTAL	8,700	809

BOTANIKO
WESTON

Stated dimensions are measured to the exterior boundaries of the exterior walls and the centerline of interior demising walls and in fact vary from the dimensions that would be determined by using the description and definition of the "Unit" set forth in the Declaration (which generally only includes the interior airspace between the perimeter walls and excludes interior structural components). Note that measurements of rooms set forth on this floor plan are generally taken at the greatest points of each given room (as if the room were a perfect rectangle), without regard for any cutouts. Accordingly, the area of the actual room will typically be smaller than the product obtained by multiplying the stated length times width. All dimensions are approximate and may vary with actual construction, and all floor plans and development plans are subject to change.



O3 | SECOND FLOOR
5 BEDROOMS / 6.5 BATHS /
MEDIA ROOM / STAFF QUARTERS

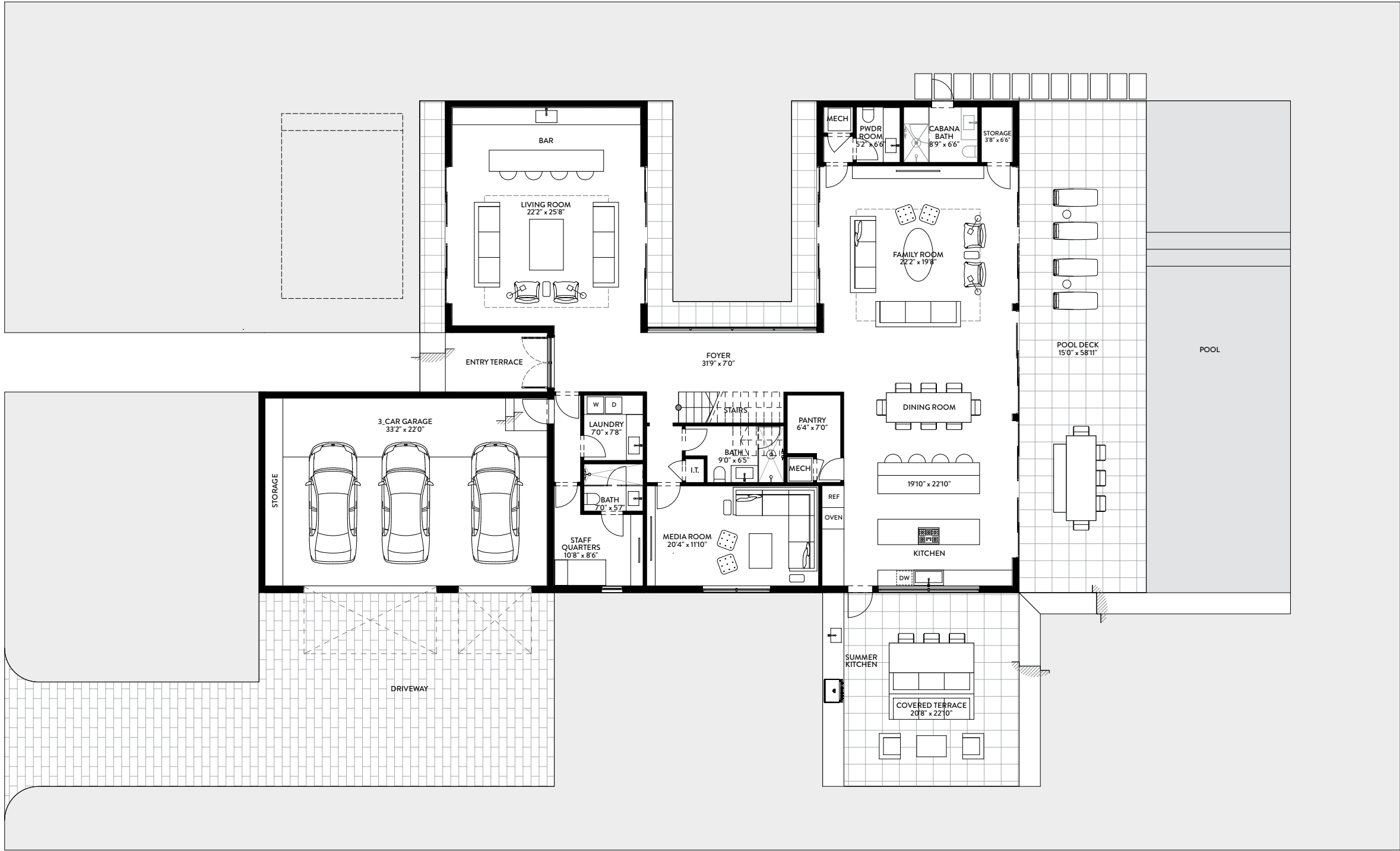
FIRST FLOOR	SQ. FT.	SQ. M.
INTERIOR	2,831	263
EXTERIOR	2,539	236
TOTAL FIRST FLOOR	5,370	499

SECOND FLOOR	SQ. FT.	SQ. M.
INTERIOR	2,644	246
EXTERIOR	686	64
TOTAL SECOND FLOOR	3,330	310

TOTAL	SQ. FT.	SQ. M.
TOTAL INTERIOR	5,475	509
TOTAL EXTERIOR	3,225	300
TOTAL	8,700	809

BOTANIKO
WESTON

Stated dimensions are measured to the exterior boundaries of the exterior walls and the centerline of interior demising walls and in fact vary from the dimensions that would be determined by using the description and definition of the "Unit" set forth in the Declaration (which generally only includes the interior airspace between the perimeter walls and excludes interior structural components). Note that measurements of rooms set forth on this floor plan are generally taken at the greatest points of each given room (as if the room were a perfect rectangle), without regard for any cutouts. Accordingly, the area of the actual room will typically be smaller than the product obtained by multiplying the stated length times width. All dimensions are approximate and may vary with actual construction, and all floor plans and development plans are subject to change.



O4 | FIRST FLOOR
5 BEDROOMS / 9.5 BATHS / LOFT /
MEDIA ROOM / STAFF QUARTERS

FIRST FLOOR	SQ. FT.	SQ. M.
INTERIOR	3,025	281
EXTERIOR	2,185	203
TOTAL FIRST FLOOR	5,210	484

SECOND FLOOR	SQ. FT.	SQ. M.
INTERIOR	3,144	292
EXTERIOR	1,003	93
TOTAL SECOND FLOOR	4,147	385

TOTAL	SQ. FT.	SQ. M.
TOTAL INTERIOR	6,169	573
TOTAL EXTERIOR	3,188	296
TOTAL	9,357	869

BOTANIKO
WESTON



Stated dimensions are measured to the exterior boundaries of the exterior walls and the centerline of interior demising walls and in fact vary from the dimensions that would be determined by using the description and definition of the "Unit" set forth in the Declaration (which generally only includes the interior airspace between the perimeter walls and excludes interior structural components). Note that measurements of rooms set forth on this floor plan are generally taken at the greatest points of each given room (as if the room were a perfect rectangle), without regard for any cutouts. Accordingly, the area of the actual room will typically be smaller than the product obtained by multiplying the stated length times width. All dimensions are approximate and may vary with actual construction, and all floor plans and development plans are subject to change.



O4 | SECOND FLOOR
5 BEDROOMS / 9.5 BATHS / LOFT /
MEDIA ROOM / STAFF QUARTERS

FIRST FLOOR	SQ. FT.	SQ. M.
INTERIOR	3,025	281
EXTERIOR	2,185	203
TOTAL FIRST FLOOR	5,210	484

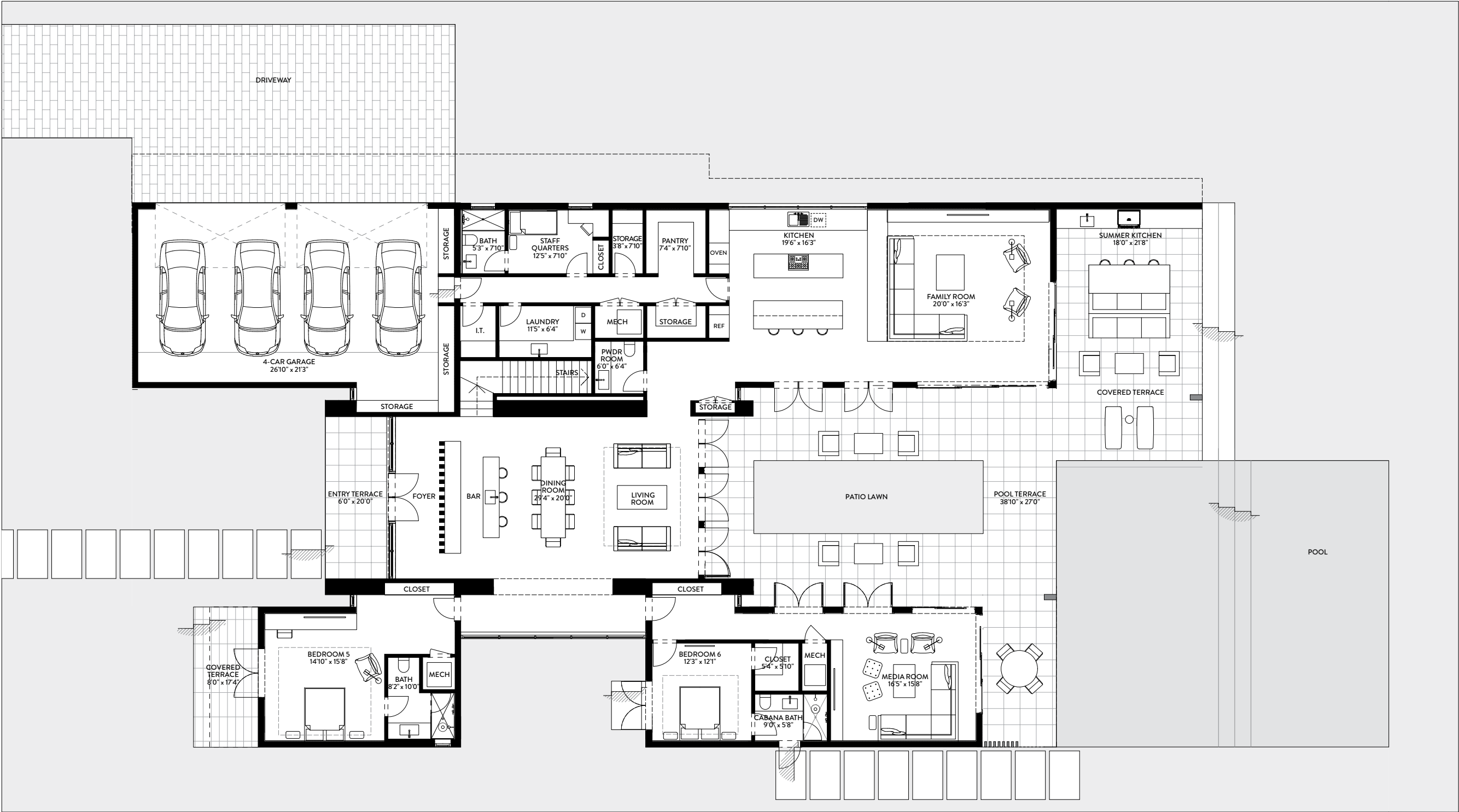
SECOND FLOOR	SQ. FT.	SQ. M.
INTERIOR	3,144	292
EXTERIOR	1,003	93
TOTAL SECOND FLOOR	4,147	385

TOTAL	SQ. FT.	SQ. M.
TOTAL INTERIOR	6,169	573
TOTAL EXTERIOR	3,188	296
TOTAL	9,357	869

BOTANIKO
WESTON



Stated dimensions are measured to the exterior boundaries of the exterior walls and the centerline of interior demising walls and in fact vary from the dimensions that would be determined by using the description and definition of the "Unit" set forth in the Declaration (which generally only includes the interior airspace between the perimeter walls and excludes interior structural components). Note that measurements of rooms set forth on this floor plan are generally taken at the greatest points of each given room (as if the room were a perfect rectangle), without regard for any cutouts. Accordingly, the area of the actual room will typically be smaller than the product obtained by multiplying the stated length times width. All dimensions are approximate and may vary with actual construction, and all floor plans and development plans are subject to change.




O5 | FIRST FLOOR
6 BEDROOMS / 8.5 BATHS /
MEDIA ROOM / STAFF QUARTERS

FIRST FLOOR	SQ. FT.	SQ. M.
INTERIOR	4,018	373
EXTERIOR	1,899	176
TOTAL FIRST FLOOR	5,917	549

SECOND FLOOR	SQ. FT.	SQ. M.
INTERIOR	3,200	297
EXTERIOR	491	46
TOTAL SECOND FLOOR	3,691	343

TOTAL	SQ. FT.	SQ. M.
TOTAL INTERIOR	7,218	670
TOTAL EXTERIOR	2,390	222
TOTAL	9,608	892

BOTANIKO
WESTON

 Stated dimensions are measured to the exterior boundaries of the exterior walls and the centerline of interior demising walls and in fact vary from the dimensions that would be determined by using the description and definition of the "Unit" set forth in the Declaration (which generally only includes the interior airspace between the perimeter walls and excludes interior structural components). Note that measurements of rooms set forth on this floor plan are generally taken at the greatest points of each given room (as if the room were a perfect rectangle), without regard for any cutouts. Accordingly, the area of the actual room will typically be smaller than the product obtained by multiplying the stated length times width. All dimensions are approximate and may vary with actual construction, and all floor plans and development plans are subject to change.



O5 | SECOND FLOOR
6 BEDROOMS / 8.5 BATHS /
MEDIA ROOM / STAFF QUARTERS

FIRST FLOOR	SQ. FT.	SQ. M.
INTERIOR	4,018	373
EXTERIOR	1,899	176
TOTAL FIRST FLOOR	5,917	549

SECOND FLOOR	SQ. FT.	SQ. M.
INTERIOR	3,200	297
EXTERIOR	491	46
TOTAL SECOND FLOOR	3,691	343

TOTAL	SQ. FT.	SQ. M.
TOTAL INTERIOR	7,218	670
TOTAL EXTERIOR	2,390	222
TOTAL	9,608	892

BOTANIKO
WESTON

Stated dimensions are measured to the exterior boundaries of the exterior walls and the centerline of interior demising walls and in fact vary from the dimensions that would be determined by using the description and definition of the "Unit" set forth in the Declaration (which generally only includes the interior airspace between the perimeter walls and excludes interior structural components). Note that measurements of rooms set forth on this floor plan are generally taken at the greatest points of each given room (as if the room were a perfect rectangle), without regard for any cutouts. Accordingly, the area of the actual room will typically be smaller than the product obtained by multiplying the stated length times width. All dimensions are approximate and may vary with actual construction, and all floor plans and development plans are subject to change.

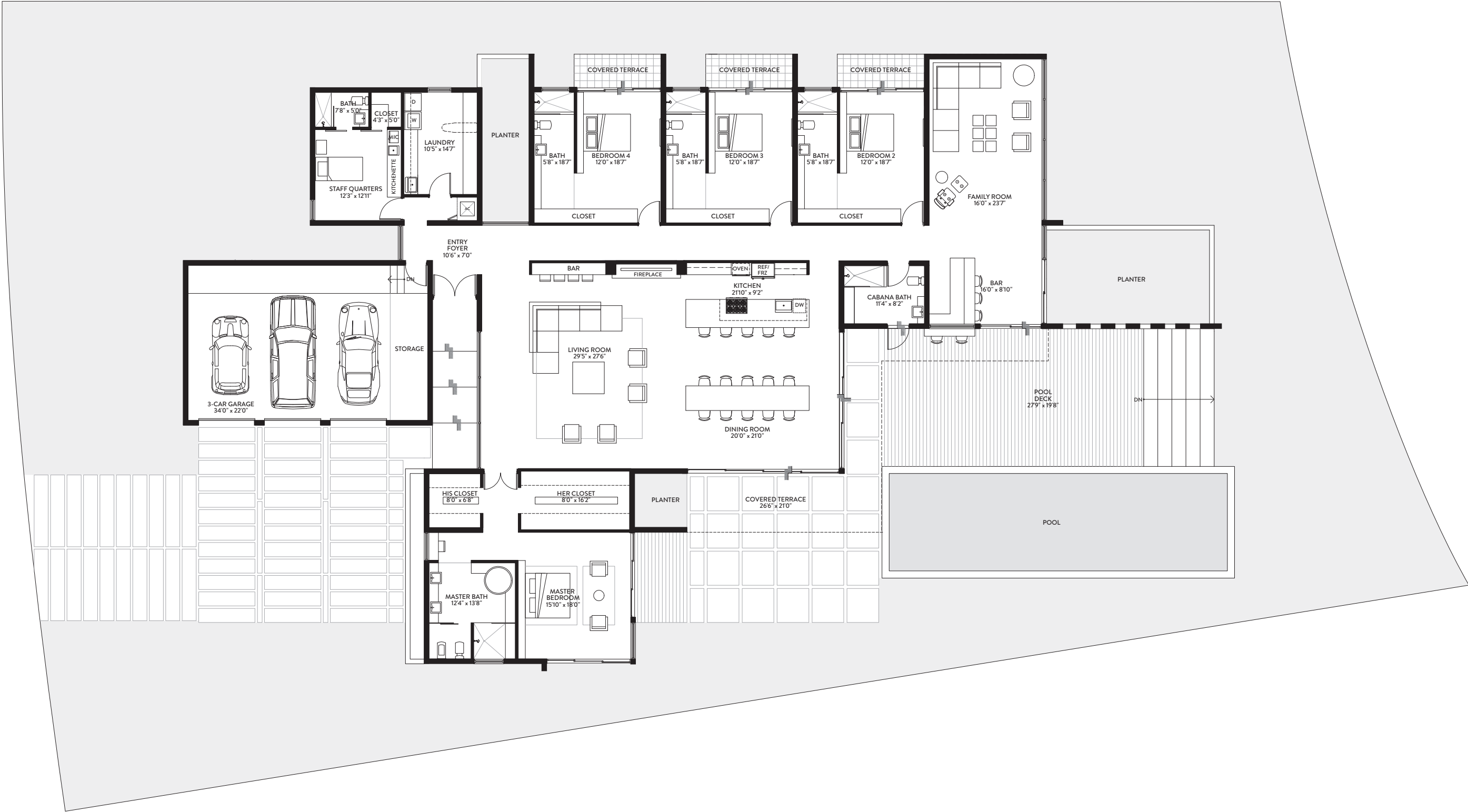


M1
4 BEDROOMS / 6.5 BATHS /
STAFF QUARTERS

TOTAL	SQ. FT.	SQ. M.
TOTAL INTERIOR	4,225	393
TOTAL EXTERIOR	3,598	334
TOTAL	7,823	727

BOTANIKO
WESTON

Stated dimensions are measured to the exterior boundaries of the exterior walls and the centerline of interior demising walls and in fact vary from the dimensions that would be determined by using the description and definition of the "Unit" set forth in the Declaration (which generally only includes the interior airspace between the perimeter walls and excludes interior structural components). Note that measurements of rooms set forth on this floor plan are generally taken at the greatest points of each given room (as if the room were a perfect rectangle), without regard for any cutouts. Accordingly, the area of the actual room will typically be smaller than the product obtained by multiplying the stated length times width. All dimensions are approximate and may vary with actual construction, and all floor plans and development plans are subject to change.



M2
4 BEDROOMS / 6 BATHS /
STAFF QUARTERS

TOTAL	SQ. FT.	SQ. M.
TOTAL INTERIOR	5,307	493
TOTAL EXTERIOR	3,361	312
TOTAL	8,668	805

BOTANIKO
WESTON



Stated dimensions are measured to the exterior boundaries of the exterior walls and the centerline of interior demising walls and in fact vary from the dimensions that would be determined by using the description and definition of the "Unit" set forth in the Declaration (which generally only includes the interior airspace between the perimeter walls and excludes interior structural components). Note that measurements of rooms set forth on this floor plan are generally taken at the greatest points of each given room (as if the room were a perfect rectangle), without regard for any cutouts. Accordingly, the area of the actual room will typically be smaller than the product obtained by multiplying the stated length times width. All dimensions are approximate and may vary with actual construction, and all floor plans and development plans are subject to change.



M3 | FIRST FLOOR
4 BEDROOMS / 6.5 BATHS /
STAFF QUARTERS

FIRST FLOOR	SQ. FT.	SQ. M.
INTERIOR	3,069	285
EXTERIOR	3,909	363
TOTAL FIRST FLOOR	6,978	648

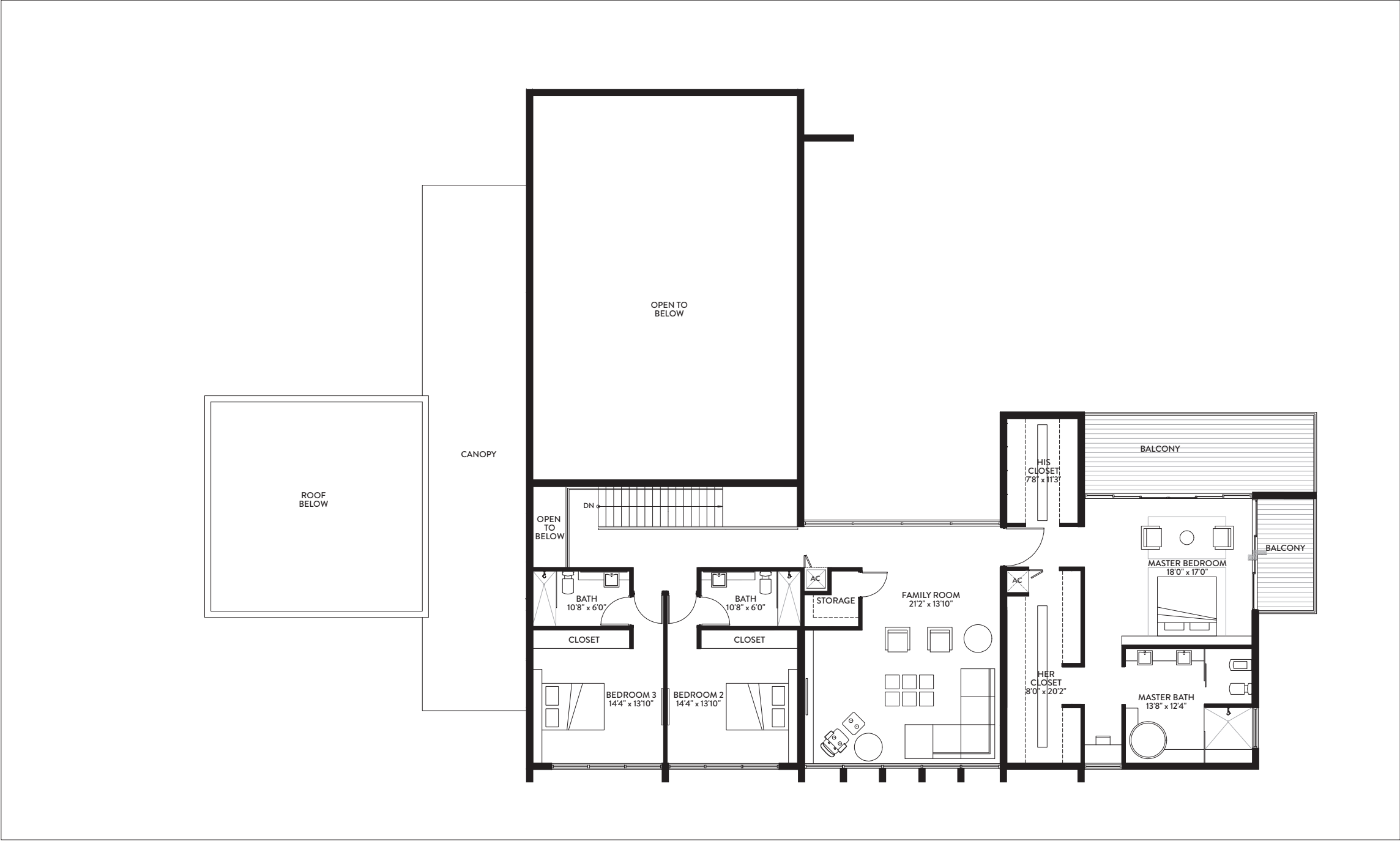
SECOND FLOOR	SQ. FT.	SQ. M.
INTERIOR	2,296	213
EXTERIOR	289	27
TOTAL SECOND FLOOR	2,585	240

TOTAL	SQ. FT.	SQ. M.
TOTAL INTERIOR	5,365	498
TOTAL EXTERIOR	4,198	390
TOTAL	9,563	888

BOTANIKO
WESTON



Stated dimensions are measured to the exterior boundaries of the exterior walls and the centerline of interior demising walls and in fact vary from the dimensions that would be determined by using the description and definition of the "Unit" set forth in the Declaration (which generally only includes the interior airspace between the perimeter walls and excludes interior structural components). Note that measurements of rooms set forth on this floor plan are generally taken at the greatest points of each given room (as if the room were a perfect rectangle), without regard for any cutouts. Accordingly, the area of the actual room will typically be smaller than the product obtained by multiplying the stated length times width. All dimensions are approximate and may vary with actual construction, and all floor plans and development plans are subject to change.



M3 | SECOND FLOOR
4 BEDROOMS / 6.5 BATHS /
STAFF QUARTERS

FIRST FLOOR	SQ. FT.	SQ. M.
INTERIOR	3,069	285
EXTERIOR	3,909	363
TOTAL FIRST FLOOR	6,978	648

SECOND FLOOR	SQ. FT.	SQ. M.
INTERIOR	2,296	213
EXTERIOR	289	27
TOTAL SECOND FLOOR	2,585	240

TOTAL	SQ. FT.	SQ. M.
TOTAL INTERIOR	5,365	498
TOTAL EXTERIOR	4,198	390
TOTAL	9,563	888

BOTANIKO
WESTON



Stated dimensions are measured to the exterior boundaries of the exterior walls and the centerline of interior demising walls and in fact vary from the dimensions that would be determined by using the description and definition of the "Unit" set forth in the Declaration (which generally only includes the interior airspace between the perimeter walls and excludes interior structural components). Note that measurements of rooms set forth on this floor plan are generally taken at the greatest points of each given room (as if the room were a perfect rectangle), without regard for any cutouts. Accordingly, the area of the actual room will typically be smaller than the product obtained by multiplying the stated length times width. All dimensions are approximate and may vary with actual construction, and all floor plans and development plans are subject to change.