



*Santidrian*  
REAL ESTATE  
Miami's Luxury Team  
305-726-4312

# GRANPARAISO

— O N T H E B A Y —

BY PIERO LISSONI

Photographed on location at Paraiso Bay



Oral representations cannot be relied upon as correctly stating the representations of the developer. For correct representations, make reference to the documents required by section 718.503, Florida Statute, to be furnished by a developer to a buyer or lessee. This is not intended to be an offer to sell, or solicitation to buy, condominium units to residents of CT, ID, NJ, NY and ORE, unless registered or exemptions are available, or in any other jurisdiction where prohibited by law. Your eligibility for purchase depends upon your state of residency. This offer is void where prohibited. Prices, plans, and specifications are subject to change. Gran Paraiso is developed by PRH Paraiso Two, LLC ("Developer"), which, pursuant to license agreements, uses the trademarked names and logos of The Related Group, which is not Developer. This offering is made only by the prospectus for the condominium; no statements other than those in the prospectus should be relied upon; consult the prospectus for terms, conditions, and unit specifications. 2015© PRH Paraiso Two, LLC with all rights reserved.





LUMINOUS, PANORAMIC VIEWS

Overlooking Biscayne Bay, GranParaiso offers stunningly beautiful views that stretch to the horizon.





Artist representation

“IMAGINE THE ULTIMATE IN  
CONTEMPORARY EUROPEAN  
DESIGN AND ULTRA-LUXURIOUS  
AMENITIES IN AN EXQUISITELY  
LANDSCAPED BAYFRONT  
LOCATION ... THIS IS THE VISION  
WE HAVE BROUGHT TO LIFE  
AT GRANPARAISO.”

JORGE M PEREZ

*Santidrian*  
REAL ESTATE  
Miami's Luxury Team  
305-726-4312





Artist representation

# DEVELOPED BY RELATED GROUP



Founded in 1979 by Jorge M. Pérez, The Related Group is the nation's leading developer of multi-family residences and is one of the largest Hispanic-owned businesses in the United States. Under his direction, as well as the leadership of Carlos Rosso, President of Condominium Development Division, The Related Group and its affiliates have redefined the South Florida landscape. Its many distinctive properties include One Ocean and Marea South of Fifth in South Beach, and SLS Hotel & Residences and Brickell Heights in Brickell.





# RESIDENTIAL INTERIORS & AMENITY SPACES BY PIERO LISSONI



Italian designer Piero Lissoni has become internationally renowned for the design of products, hotels, residential complexes, corporate headquarters and yachts. His work is always sophisticated, elegant, precise in each detail, never overwhelming, and always versatile – he likes to integrate the many different layers of life. Lissoni has collaborated with the most notable furniture and design companies in the world. His clients include Alessi, Boffi, Cappellini, Cassina, Flos, Fritz Hansen, Glas Italia, Kartell, Lema, Living Divani, Matteograssi, Poltrona Frau and Tecno among others.





Artist representation

DESIGNED TO TAKE YOUR BREATH AWAY

Contemporary architecture with floor-to-ceiling window walls and glass-rail terraces ensure that residents enjoy spectacular views.





Artist representation

## SOPHISTICATED SIMPLICITY

Residences by Italian designer Piero Lissoni bring rich materials together with the clean, modern lines to create homes of unparalleled elegance.





THE LUXURY OF OUTDOOR LIVING

Expansive private terraces – some with pools – offer a sophisticated escape for relaxation or entertainment.





Artist representation

## LANDSCAPED POOL TERRACE

Designed by award-winning landscape architect Enzo Enea with lush tropical foliage, cool white stone, and dramatic lighting, the pool terrace is an oasis of serenity at any hour.





Artist representation

#### BEACH CLUB DINING BY MICHAEL SCHWARTZ

Set directly on Biscayne Bay, GranParaiso's Beach Club features a restaurant by award-winning chef Michael Schwartz with casually elegant indoor and outdoor dining areas



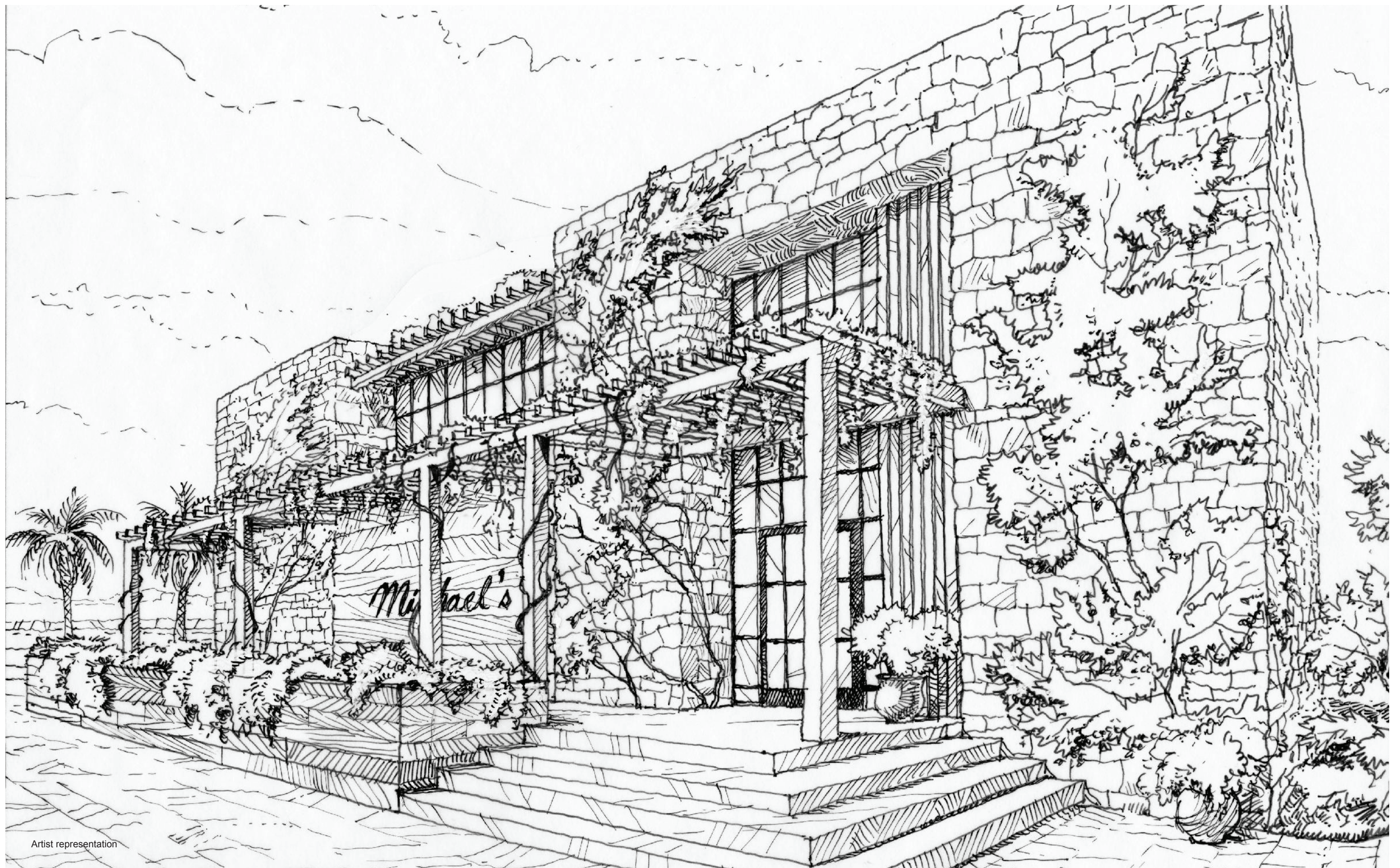


Artist representation

#### BAYFRONT BEACH CLUB PRIVILEGES

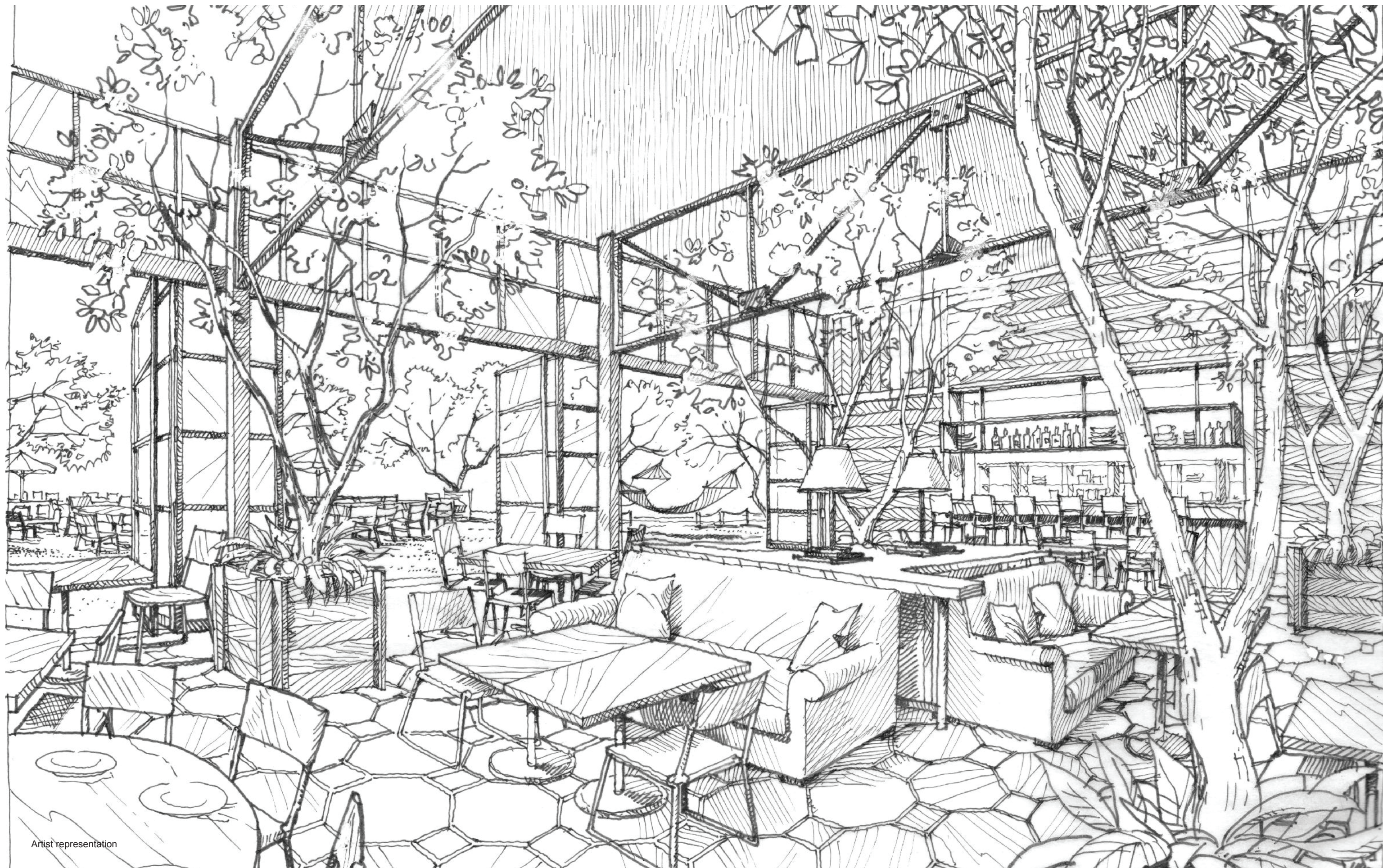
Residents enjoy ideal access to every bayfront pleasure at the Beach Club, from a private beach to poolside food and beverage service.



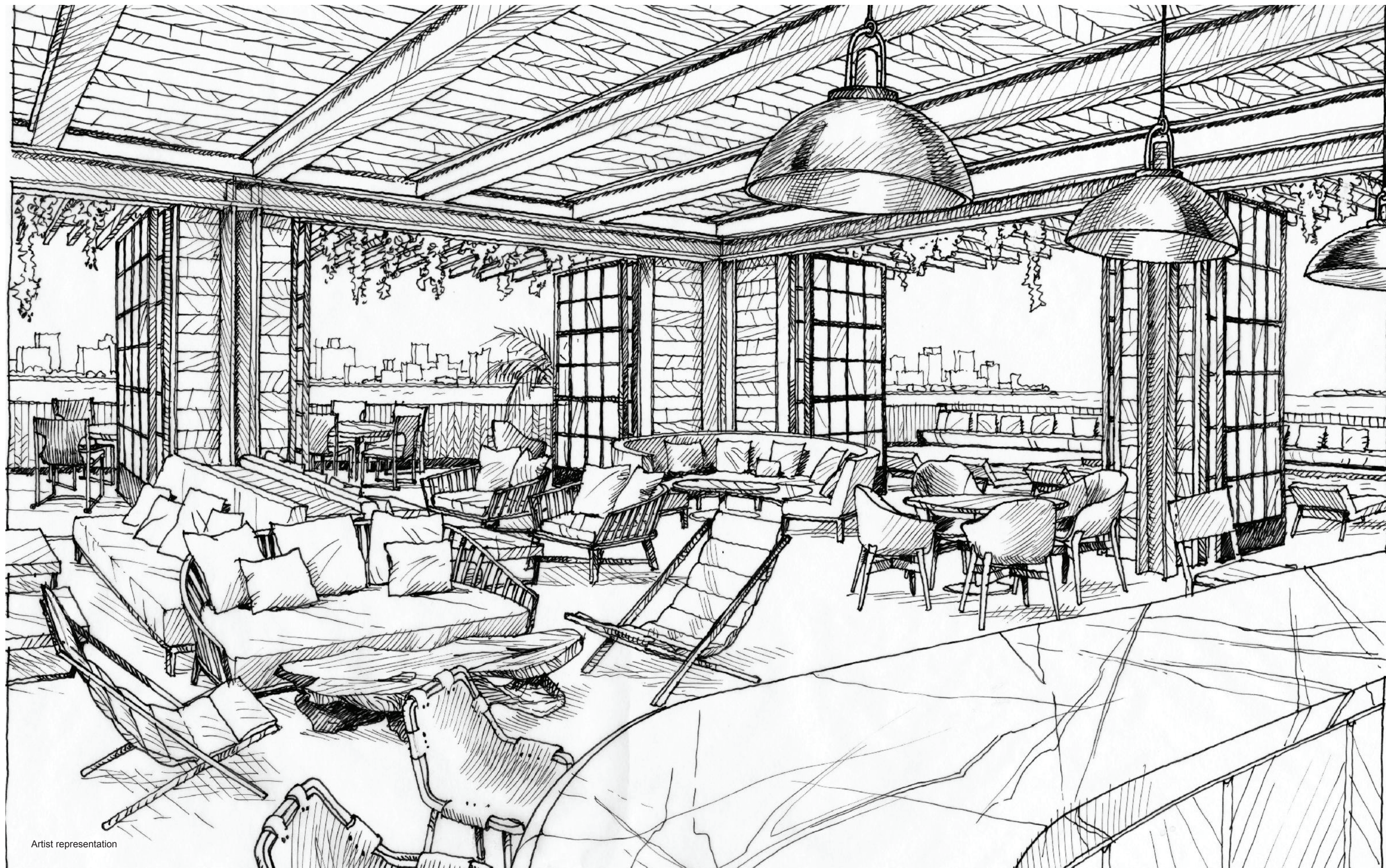


Artist representation













# BEACH CLUB DINING BY MICHAEL SCHWARTZ



James Beard Award-winning chef/ restaurateur Michael Schwartz, founder of The Genuine Hospitality Group, has an all-encompassing passion for the art of what he calls “good food”. He brings great attention to everything from the growing and harvesting of the finest fruits and vegetables, and relationships with the most responsible fisherman and ranchers, to the preparation and serving of menus that change daily in accordance with what’s in season. The Genuine Hospitality Group operates several restaurants in the Miami area and beyond, including Michael’s Genuine® Food & Drink, The Cypress Room, and Harry’s Pizzeria in Miami’s Design District.





# GARDENS & POOL TERRACES BY ENZO ENEA



Enea GmbH has established itself as one of the leading landscape architecture firms in Switzerland and in the world. Founded by Enzo Enea, the firm is widely recognized for the design and construction of private gardens and terraces, restaurants, hotel and resort environments, corporate gardens, public parks, and golf courses. Enea has received numerous awards at the Giardina show in Basel and Zurich. His creations are comprehensively documented in the book, *Enea private gardens*.



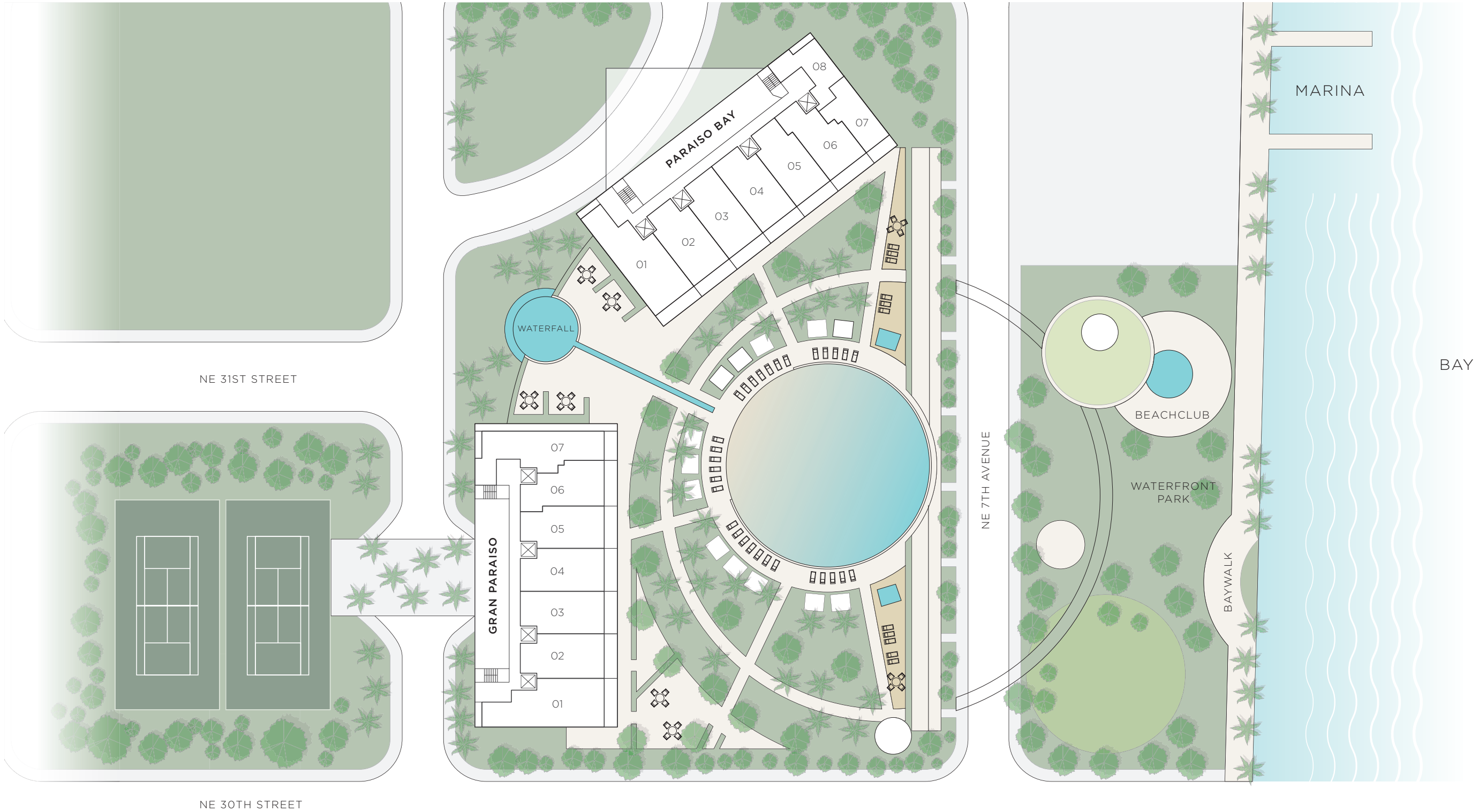


# ORIGINAL WORKS OF ART BY PABLO ATCHUGARRY



Born in Montevideo, Uruguay, Pablo Atchugarry is an internationally renowned sculptor whose works have been exhibited in more than 80 solo and collective exhibitions worldwide. Abstract and numinous, massive and delicately carved, his sculptures are reflections on the intervention of the spiritual in everyday life. Widely traveled, Atchugarry has taken inspiration from a variety of artists and traditions, including 20th century Latin American art, the Constructivist tradition founded by Joaquín Torres García, the Muralist school in Mexico, and modernists Constantin Brancusi and Henry Moore.





# SITE PLAN



There are various methods for calculating the square footage of a Unit and depending on the method of calculation, the quoted square footage of a Unit in advertising materials may vary from the square footage of a Unit as stated or described in the Prospectus and the Declaration. The dimensions in the Unit shown in this floor plan have been calculated from the exterior boundaries of the exterior walls to the centerline of interior demising walls, including common elements such as structural walls and other interior structural components of the building and in fact vary from the dimensions that result by using the description of the "Unit" and dimensions set forth in the Prospectus and the Declaration. The area of the Unit, determined in accordance with "Unit" as defined in the Prospectus and the Declaration is less than the square footage reflected here. The configuration, allocation, and use of space or the floor plan design may vary from that depicted here or in the Prospectus and/or Declaration because the Developer reserves the right in the Prospectus to make architectural, engineering, design, dimension, specification, and floor plan changes at any time, in the Developer's discretion, without notice to Unit buyers. The measurement of any room in this floor plan is generally taken at the greatest points of each given room (as if the room were a perfect rectangle) without regard for any cutouts. Accordingly, the area of the actual room will typically be smaller than the product obtained by multiplying the length times width stated here. The furnishings, appliances, fixtures, and décor illustrated are not included with the purchase of the Unit. See Prospectus for information regarding what is offered with the Unit and the calculation of the Unit square footage and dimensions.