



PARK GROVE

OMA · REM KOOLHAAS

Coconut Grove, Miami

BAYFRONT RESIDENCES
IN COCONUT GROVE
DESIGNED BY
OMA · REM KOOLHAAS

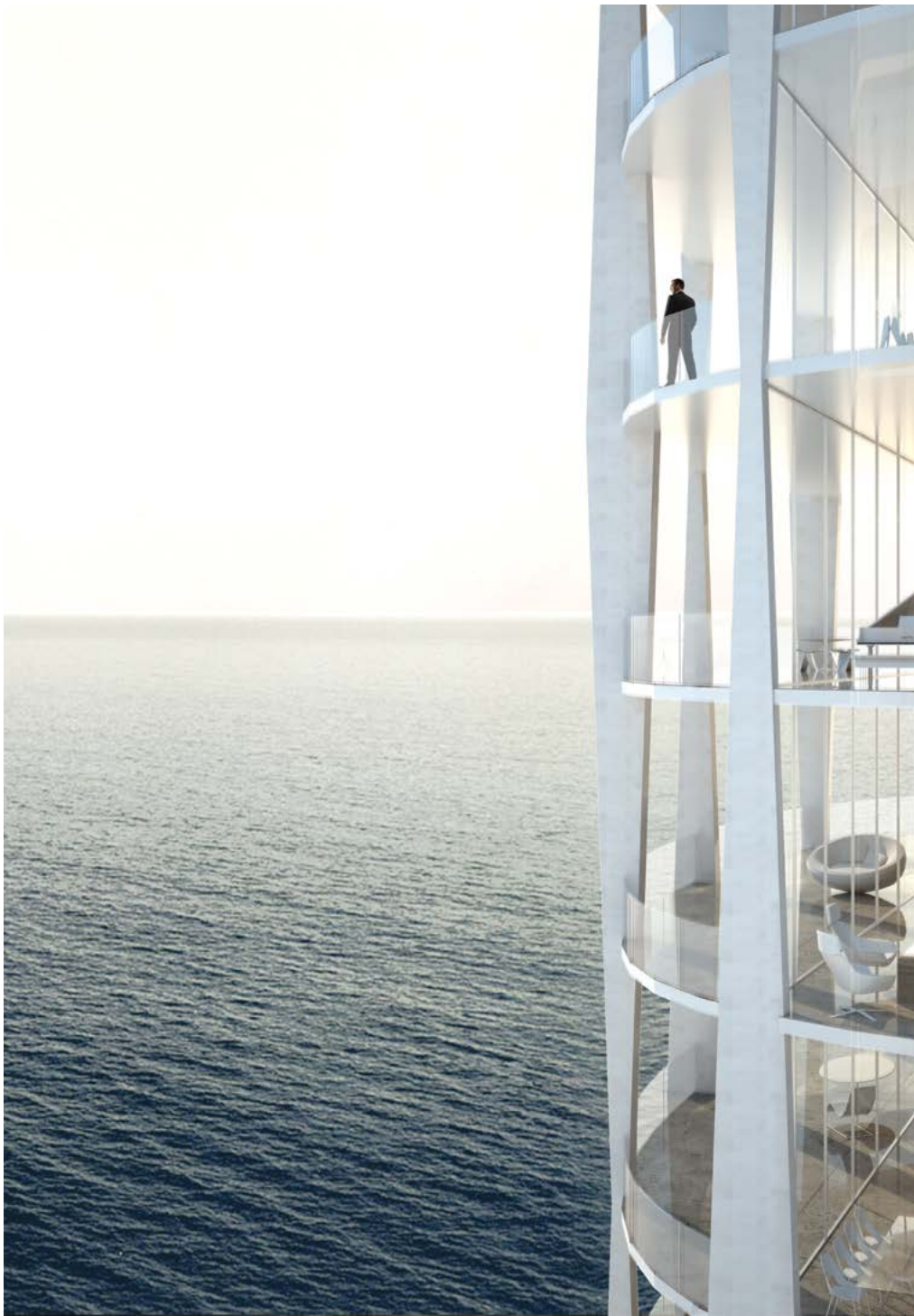


ELEGANT MODERNISM ABOVE THE BAY

Building on Coconut Grove's rich tradition of upscale bohemian living, Park Grove strikes a thoughtful balance between direct access to downtown Miami and a sense of serenity and separation. With its lush natural beauty, artistic legacy, and distinguished schools, the Grove has long been one of Miami's most desirable neighborhoods. At Park Grove, every element—from architecture and art to landscape and interiors—exists in perfect harmony with the surrounding area.

At home, residents will enjoy world-class architecture by Rem Koolhaas and OMA, elegant modernist interiors by William Sofield, and inventive landscaping by Enzo Enea. From their bayfront homes and private gardens, they will be able to escape Miami's irresistible energy. At Park Grove, the best of haute living, boating, high culture, a vibrant society, meets a relaxed artistic sensibility, making this a place where community is valued, but privacy takes precedence.

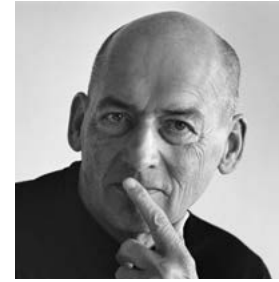
Biscayne Bay is at the heart of the Park Grove lifestyle, where life moves with the rhythm of the tides.



Modernist architecture meets expansive bay views.

OMA · REM KOOLHAAS

ARCHITECTURE

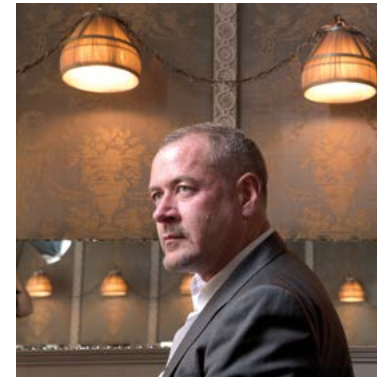


Founded in 1975 by Dutch architect Rem Koolhaas and partners, the Office for Metropolitan Architecture (OMA) has since become one of the world's most revered architectural and urban design practices. In 2000, Koolhaas received the Pritzker Architecture Prize—the industry's most prestigious award. In addition to designing some of the world's most respected buildings, he is also the author of *Delirious New York* and *S,M,L,XL*, widely considered to be two of the most influential architecture books ever written. Along with partners Shohei Shigematsu, Ellen van Loon, Reinier de Graaf, Iyad Alsaka, and David Gianotten, Koolhaas has expanded OMA into a global powerhouse with offices in Rotterdam, New York, Beijing, Hong Kong, and Doha. The New York practice is led by Shohei Shigematsu, who joined OMA in 1998 and became a partner in 2008. Shigematsu oversees all of OMA's projects in North America, including the development at Park Grove. Under his leadership, OMA has completed Milstein Hall at Cornell University, the National Beaux Arts Museum in Quebec City, and the Faena Arts Center in Miami Beach. Shigematsu has also led numerous high-profile collaborations that blur the line between architecture and art: He created a seven-screen pavilion in Cannes with Kanye West, oversaw a studio renovation for artist Cai Guo Qiang, and designed the Marina Abramović Institute for the Preservation of Performance Art.



WILLIAM SOFIELD

INTERIORS



One of the most discerning design talents of his generation, interior designer William Sofield abides by the mantra: “Design must live as well as it looks.” In his work, he draws on historic precedent for inspiration but adheres to Modernist principles, always striking a careful balance between aesthetic impact and everyday comfort. Founded in 1996, Studio Sofield is an interdisciplinary firm whose 25 designers specialize in architecture, engineering, and industrial, interior, graphic, and landscape design. Sofield has overseen numerous commercial and residential projects for clients ranging from Tom Ford and Harry Winston to the Soho Grand Hotel and David Barton Gyms. And his singular style has not gone unacknowledged: He received the prestigious Cooper Hewitt National Design Award for Interior Design in 2010. In regard to his work at Park Grove, he notes: “At Park Grove, luxury will be articulated through a delicate dialogue between elegant minimal design and crafted organic materials.”

William Sofield’s elegant interiors are the embodiment of everyday luxury.



ENZO ENEA

LANDSCAPES



Acclaimed international landscape designer Enzo Enea is known for his rare ability to fuse the indoors with the outside world, creating livable outdoor spaces that blur the boundaries between a structure and its surrounding landscape. His work maximizes the potential for each site by celebrating native plants and geography, while creating inventive solutions that make each project entirely unique. Enea's many accolades include numerous gold and silver awards at the Giardina show in Basel and Zurich, and a certificate of merit from the prestigious Chelsea Flower Show in London. In 2010, Enea opened the celebrated Enea Tree Museum near Switzerland's Lake Zurich, establishing himself as one of the world's preeminent tree collectors. Here, as in all of Enea's work, there is an abiding respect for sustainability and the relationship between the built environment and the natural world. Enea brings these same philosophies to Park Grove, noting, "We have a great opportunity and responsibility to maintain the history of the site through the preservation of its landscapes."

Enzo Enea's serene landscapes invite you to extend your home to the lush gardens beyond.



TERRA GROUP

DEVELOPMENT PARTNER

Terra Group is more than a real estate development firm—it's a civic galvanizer that works tirelessly to reinvigorate communities, enhance the urban landscape, and promote culture throughout South Florida. Founded in 2001 and led by father-and-son team Pedro and David Martin, this Miami-based firm is known for its trendsetting high-end residential communities that are as innovative as they are impactful. Through its thoughtful development strategy, Terra has gained a reputation for revitalizing neighborhoods and raising the overall profile of the areas it develops. The firm's unparalleled success in the region is largely due to the expertise and talent of its multi-faceted team, which includes architects, builders, designers, and strategists working together to bring Terra's singular vision to life. Beyond exceptional development, this award-winning team also plays an active role in charitable, civic, arts, and cultural organizations—a testament to its deep commitment to enhancing and enriching the community from every angle.

RELATED GROUP

DEVELOPMENT PARTNER

Since its founding in 1979, Related Group of Florida has been at the forefront of luxury condominium development, setting a new industry standard for excellence and innovation. Helmed by Chairman and CEO Jorge Pérez, one of the country's leading entrepreneurs, Related has built and managed more than 80,000 condominium and apartment residences in major markets throughout Florida. It is known for its groundbreaking luxury properties, including Miami's Portofino Tower, Icon South Beach, Apogee, Murano Grande, and multiple collaborations with Donald Trump. The celebrated firm's properties showcase impeccable craftsmanship, innovative design, and a commitment to creating spaces that will endure and appreciate with time. Often partnering with world-renowned architects, designers, and artists, Related continues to push boundaries and raise the bar for the entire real estate community. Its dozens of awards include the Honor Award from the National Building Museum— an acknowledgment of architecture and design excellence in new development.

Designed by a world-class team of leading architects, designers, and developers, Park Grove marries inventive modern design with the area's rich cultural legacy, creating an ambiance that is as luxurious as it is relaxed. From its residences to its amenities and club, Park Grove offers the ultimate in serene bayfront living.

ARCHITECTURE BY
OMA · REM KOOLHAAS

INTERIORS BY
WILLIAM SOFIELD

LANDSCAPES BY
ENZO ENEA

Designed by World-Renowned architect OMA · Rem Koolhaas
Expansive Bay and City Views
Certified LEED® Silver
24-Hour Concierge and Valet Service
Nautical Themed Concierge for Booking Yachts, Boats, Sailing Lessons, etc.
Butler Service
Private Business Center with Meeting Rooms
Lush Landscaped Gardens by Enzo Enea
Sculpture Garden
Artwork by Notable Sculptors and Artists
Lobbies and Amenity Area designed by William Sofield
Luxurious Pool with Private Cabanas
Bayview Dining Room for Private Events
Dedicated Penthouse Pools
Wine Cellar and Wine Lockers for Residents
Indoor/Outdoor Yoga Spaces
Large Conference Room/Boardroom with Video Conferencing Capabilities
and Integrated Media Systems
Library
Fitness Rooms, Reception, and Mail Room for each Residential Tower
Storage for Bike and Watercraft Storage
Residents' Lounge for Events
Children's Indoor and Outdoor Play Area
Private Screening/Media Room
Adult Gaming Room including Billiards and Table Tennis

RESIDENCES

Interiors designed by William Sofield
Italian Cabinetry with Glass Doors and Stone Countertops
Sub-Zero/Wolf Appliances

AMENITIES

To be accessed by all Park Grove residents as well as outside members
Curated Events and Speaking Appearances by Top Leaders in
Diverse Industries, Private Musical Performances by Acclaimed Artists,
Private Movie Screenings, and Epicurean Events
Concierge Services
Large Dining Area and Full Service Kitchen with Acclaimed Chef
Library/Lounge Area
Social Spaces
State-of-the-Art Fitness Center, including:
Top-of-the-Line Fitness Equipment and Free Weights
Private Training Rooms, including Yoga, Pilates, and Spinning Studio
Spa with Personal Treatment Rooms, Steam, and Sauna
Men's and Women's Locker Rooms

PARK GROVE



BAYFRONT RESIDENCES COCONUT GROVE

DEVELOPED BY
TERRA GROUP & RELATED GROUP

Broker participation welcome. Oral representation cannot be relied upon as correctly stating the presentation of the Developer, for correct representation, make reference to the documents required by section 718.503 Florida Statutes, to be furnished by the Developer or Buyer or Lessee. Not an offer where prohibited by State Statutes. Plans, features and amenities subject to change without notice. All illustrations and plans are artist conceptual renderings and are subject to change without notice. This advertisement does not constitute an offer in the states of NY or NJ or any jurisdiction where prior registration or other qualification is required.
EQUAL HOUSING OPPORTUNITY