



AVENTURA

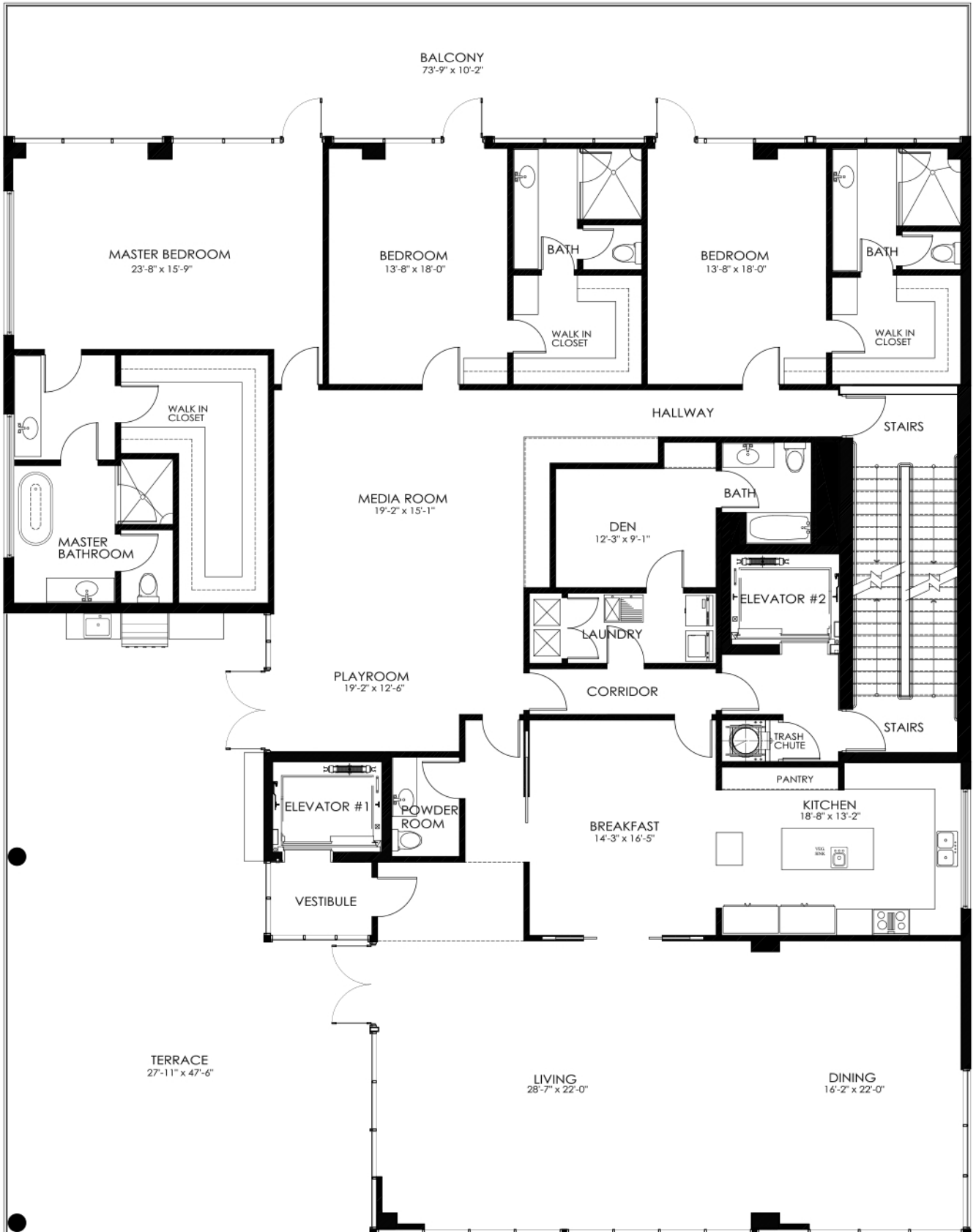
BOUTIQUE RESIDENCES & MARINA



20605

Conceptual rendering

Interior 5,059 SF	●	470.03 m ²
Terrace 1,123 SF	●	104.33 m ²
Balcony 749 SF	●	69.58 m ²
Total 6,931 SF	●	643.91 m²



STATED DIMENSIONS ARE MEASURED TO THE EXTERIOR BOUNDARIES OF THE EXTERIOR WALLS AND THE CENTERLINE OF DEMISING WALLS AND IN FACT VARY FROM THE DIMENSIONS THAT WOULD BE DETERMINED BY USING THE DESCRIPTION AND DEFINITION OF THE "UNIT" SET FORTH IN THE DECLARATION (WHICH GENERALLY ONLY INCLUDES THE INTERIOR AIRSPACE BETWEEN THE PERIMETER WALLS AND EXCLUDES INTERIOR STRUCTURAL COMPONENTS). ADDITIONALLY, MEASUREMENTS OF ROOMS SET FORTH ON ANY FLOOR PLAN ARE GENERALLY TAKEN AT THE GREATEST POINTS OF EACH GIVEN ROOM (AS IF THE ROOM WERE A PERFECT RECTANGLE), WITHOUT REGARD FOR ANY CUTOUTS. ACCORDINGLY, THE AREA OF THE ACTUAL ROOM WILL TYPICALLY BE SMALLER THAN THE PRODUCT OBTAINED BY MULTIPLYING THE STATED LENGTH TIMES WIDTH. ALL DIMENSIONS ARE APPROXIMATE, AND ALL FLOOR PLANS ARE SUBJECT TO CHANGE.

Interior 5,059 SF	●	470.03 m ²
Terrace 1,123 SF	●	104.33 m ²
Balcony 749 SF	●	69.58 m ²
Total 6,931 SF	●	643.91 m²



STATED DIMENSIONS ARE MEASURED TO THE EXTERIOR BOUNDARIES OF THE EXTERIOR WALLS AND THE CENTERLINE OF DEMISING WALLS AND IN FACT VARY FROM THE DIMENSIONS THAT WOULD BE DETERMINED BY USING THE DESCRIPTION AND DEFINITION OF THE "UNIT" SET FORTH IN THE DECLARATION (WHICH GENERALLY ONLY INCLUDES THE INTERIOR AIRSPACE BETWEEN THE PERIMETER WALLS AND EXCLUDES INTERIOR STRUCTURAL COMPONENTS). ADDITIONALLY, MEASUREMENTS OF ROOMS SET FORTH ON ANY FLOOR PLAN ARE GENERALLY TAKEN AT THE GREATEST POINTS OF EACH GIVEN ROOM (AS IF THE ROOM WERE A PERFECT RECTANGLE), WITHOUT REGARD FOR ANY CUTOUTS. ACCORDINGLY, THE AREA OF THE ACTUAL ROOM WILL TYPICALLY BE SMALLER THAN THE PRODUCT OBTAINED BY MULTIPLYING THE STATED LENGTH TIMES WIDTH. ALL DIMENSIONS ARE APPROXIMATE, AND ALL FLOOR PLANS ARE SUBJECT TO CHANGE.

Interior 5,059 SF	●	470.03 m ²
Terrace 1,123 SF	●	104.33 m ²
Balcony 749 SF	●	69.58 m ²
Total 6,931 SF	●	643.91 m²



STATED DIMENSIONS ARE MEASURED TO THE EXTERIOR BOUNDARIES OF THE EXTERIOR WALLS AND THE CENTERLINE OF DEMISING WALLS AND IN FACT VARY FROM THE DIMENSIONS THAT WOULD BE DETERMINED BY USING THE DESCRIPTION AND DEFINITION OF THE "UNIT" SET FORTH IN THE DECLARATION (WHICH GENERALLY ONLY INCLUDES THE INTERIOR AIRSPACE BETWEEN THE PERIMETER WALLS AND EXCLUDES INTERIOR STRUCTURAL COMPONENTS). ADDITIONALLY, MEASUREMENTS OF ROOMS SET FORTH ON ANY FLOOR PLAN ARE GENERALLY TAKEN AT THE GREATEST POINTS OF EACH GIVEN ROOM (AS IF THE ROOM WERE A PERFECT RECTANGLE), WITHOUT REGARD FOR ANY CUTOUTS. ACCORDINGLY, THE AREA OF THE ACTUAL ROOM WILL TYPICALLY BE SMALLER THAN THE PRODUCT OBTAINED BY MULTIPLYING THE STATED LENGTH TIMES WIDTH. ALL DIMENSIONS ARE APPROXIMATE, AND ALL FLOOR PLANS ARE SUBJECT TO CHANGE.



THE INFORMATION CONTAINED IN THIS BROCHURE IS NOT NECESSARILY AN ACCURATE DEPICTION OF THE PROJECT.

The information contained in this brochure is conceptual only and used to depict the spirit of the lifestyles and environment to be achieved rather than specifics that are to be delivered. This brochure is merely intended as an illustration of the activities, community and concepts depicted herein, and/or features consistent with the displayed lifestyle. This information should not be relied upon as representations, express or implied, of the actual detail of the Project. The Developer expressly reserves the right to make modifications, revisions, and changes it deems desirable in its sole and absolute discretion and without prior notice. Developer reserves the right to substitute any of the foregoing with Items of similar or better value in developer's opinion. For details regarding the amenities and features to be included and/or the units, make reference to the Purchase Agreement and the prospectus. This is not an offer to sell, or solicitation of offers to buy, in states where such offer or solicitation cannot be made. Prices, plans and specifications are subject to change without notice.