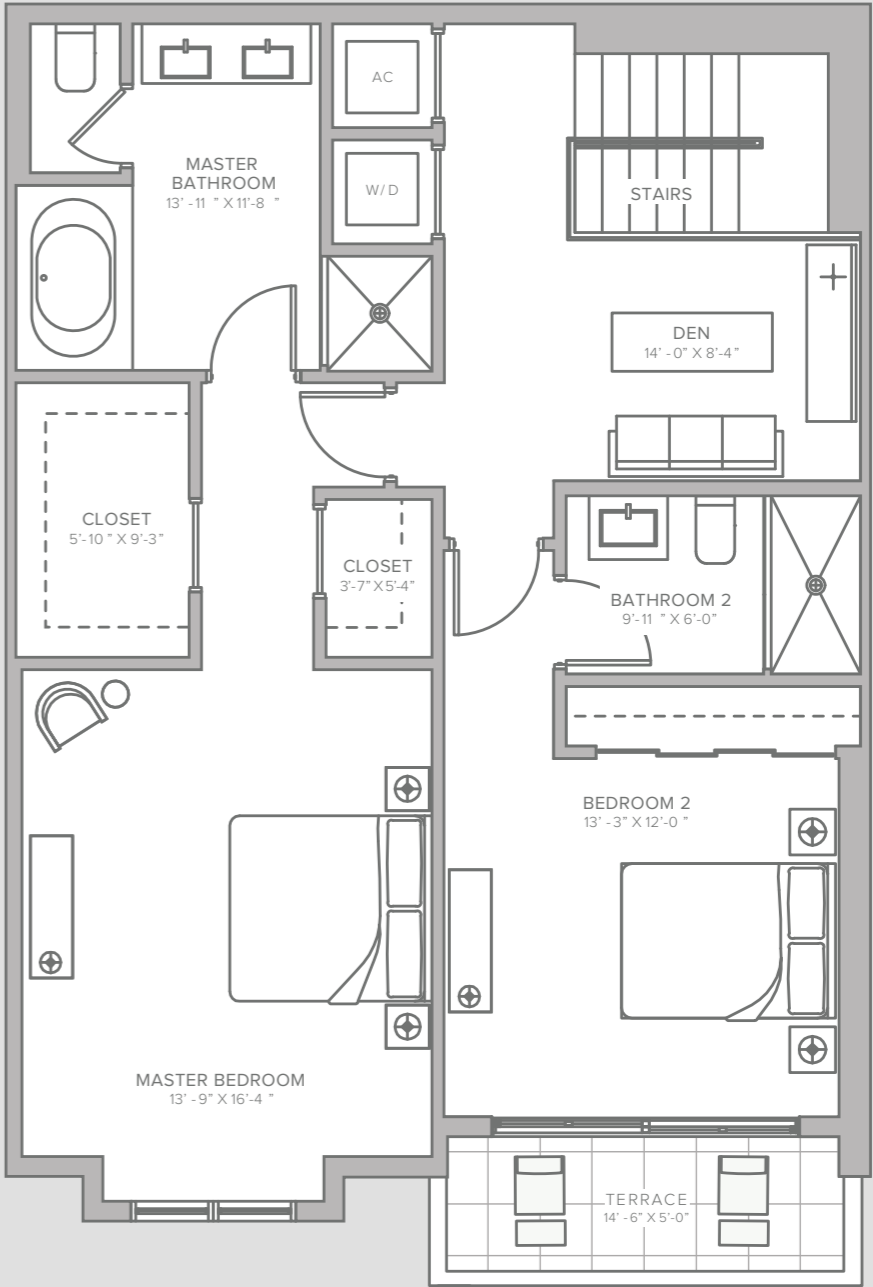
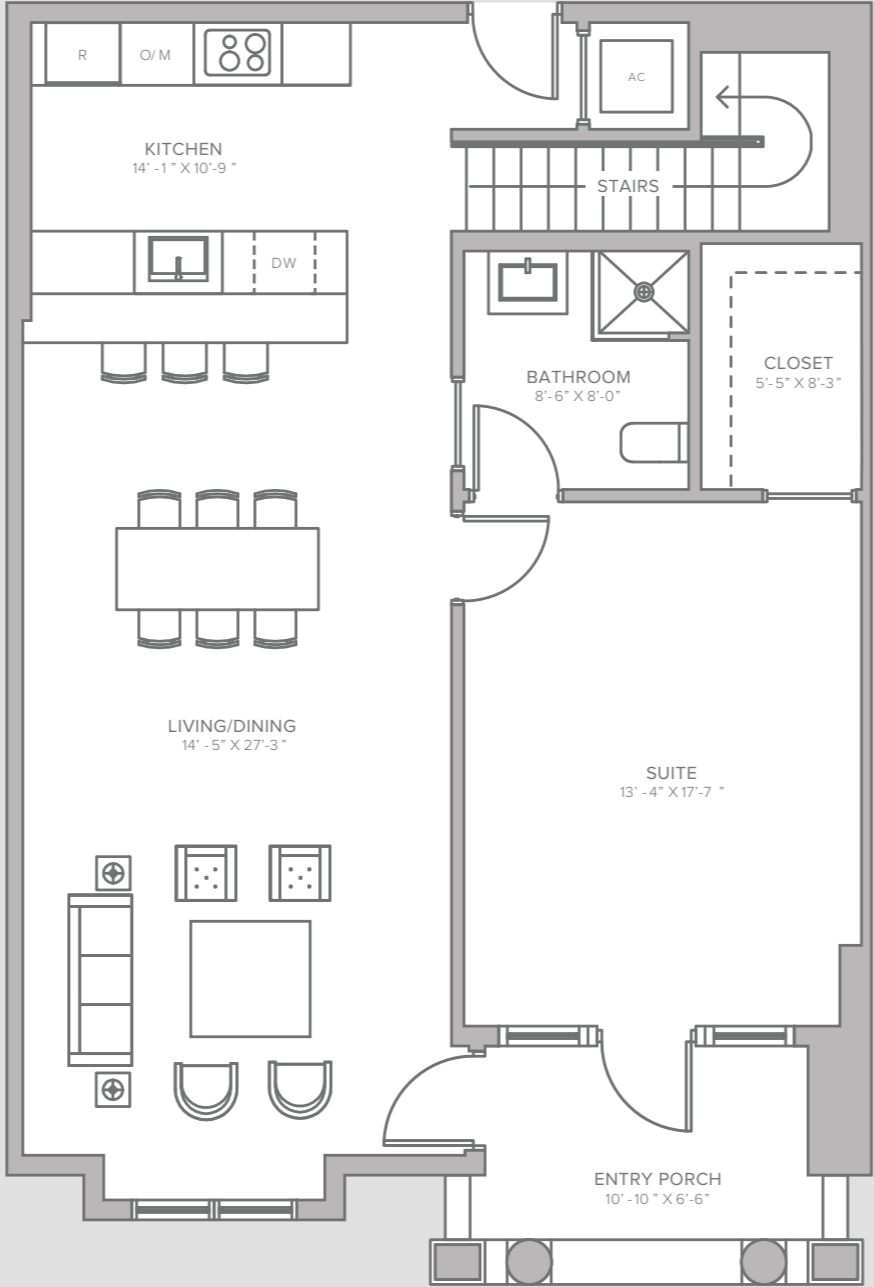
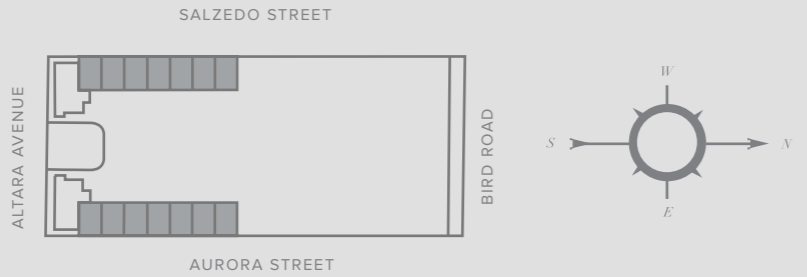


# THE COLLECTION<sup>®</sup> RESIDENCES

## TOWNHOMES

INTERIOR	TERRACE	
<b>2,242 Sq Ft</b>	<b>70 Sq Ft</b>	3 BEDROOMS
<b>208 Sq M</b>	<b>7 Sq M</b>	3 BATHS
		DEN



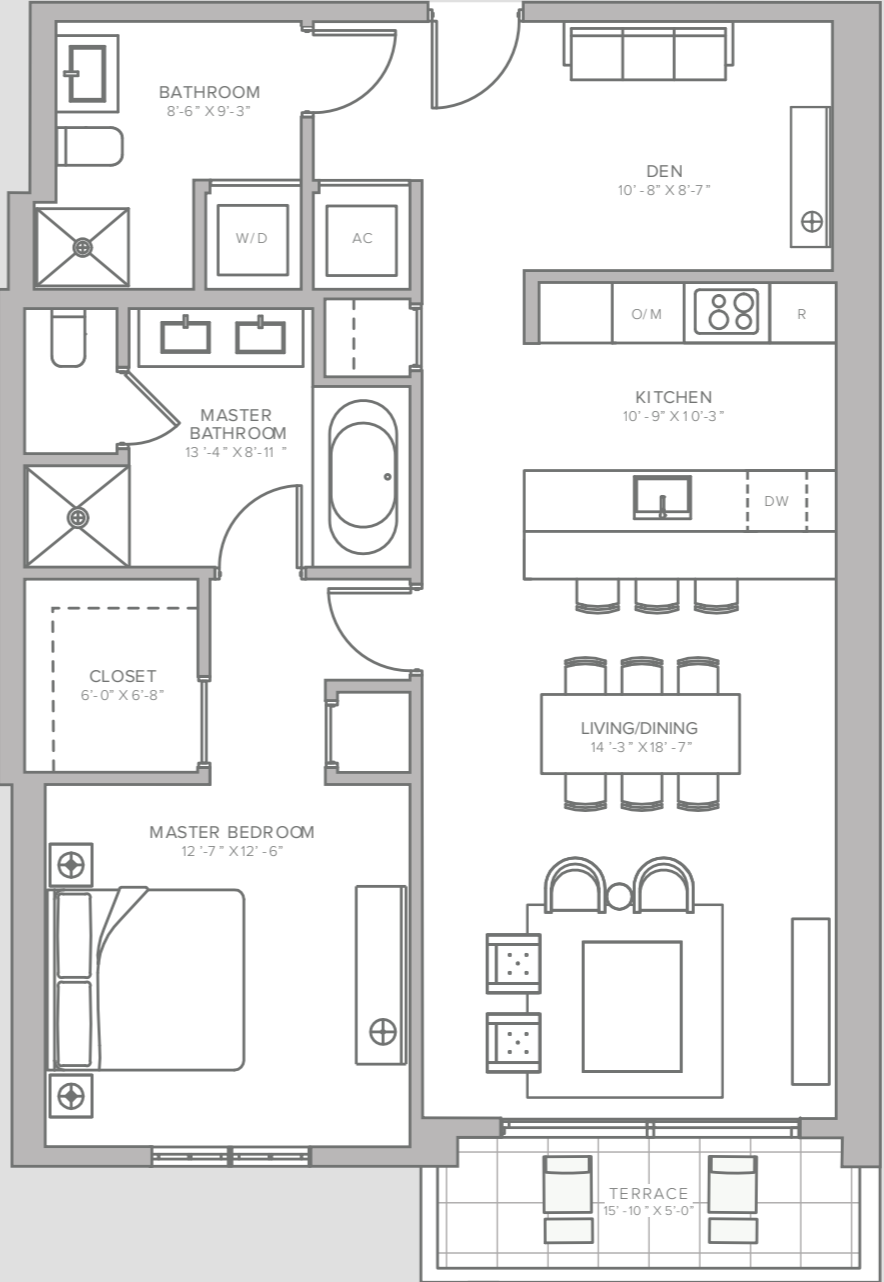
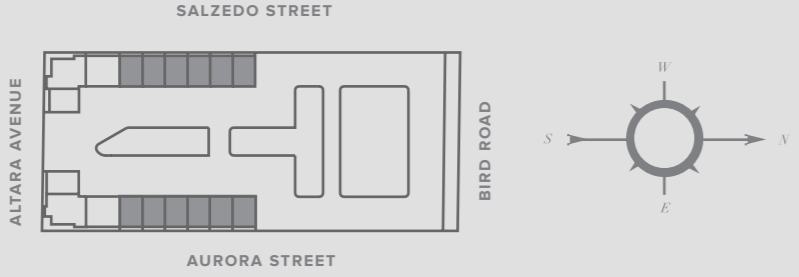
Stated dimensions are measured to the exterior boundaries of the exterior walls and the centerline of interior demising walls and in fact vary from the dimensions that would be determined by using the description and definition of the "Unit" set forth in the Declaration (which generally only includes the interior airspace between the perimeter walls and excludes interior structural components). For your reference, the area of the Unit, determined in accordance with those defined unit boundaries, is 2,040 square feet. Note that measurements of rooms set forth on this floor plan are generally taken at the greatest points of each given room (as if the room were a perfect rectangle), without regard for any cutouts. Accordingly, the area of the actual room will typically be smaller than the product obtained by multiplying the stated length times width. All dimensions are approximate and may vary with actual construction, and all floor plans and development plans are subject to change. The Unit will be delivered unfurnished, furniture will not be included with the Unit.

# THE COLLECTION<sup>™</sup>

## RESIDENCES

### 1A | FLOORS 3-4

INTERIOR	TERRACE	
<b>1,120 Sq Ft</b>	<b>76 Sq Ft</b>	1 BEDROOM
<b>104 Sq M</b>	<b>7 Sq M</b>	2 BATHS
		DEN



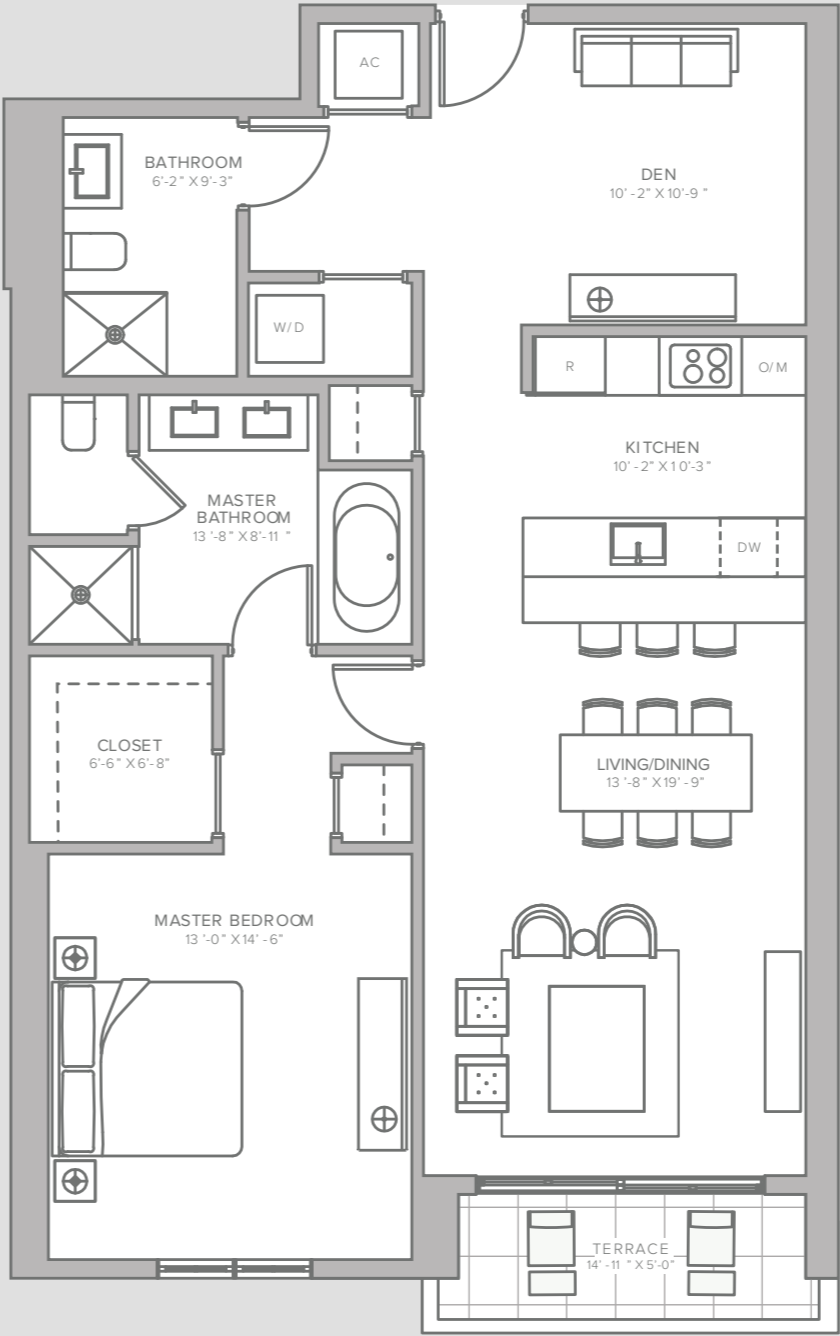
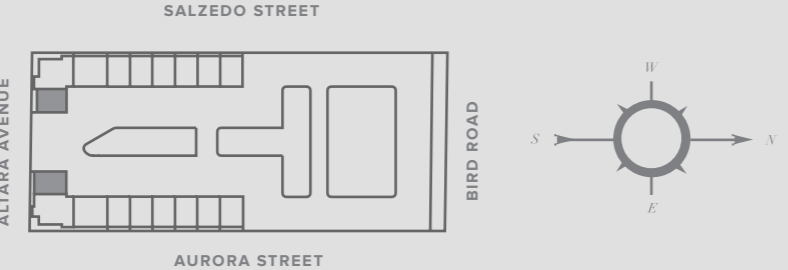
Stated dimensions are measured to the exterior boundaries of the exterior walls and the centerline of interior demising walls and in fact vary from the dimensions that would be determined by using the description and definition of the "Unit" set forth in the Declaration (which generally only includes the interior airspace between the perimeter walls and excludes interior structural components). For your reference, the area of the Unit, determined in accordance with those defined unit boundaries, is 1,050 square feet. Note that measurements of rooms set forth on this floor plan are generally taken at the greatest points of each given room (as if the room were a perfect rectangle), without regard for any cutouts. Accordingly, the area of the actual room will typically be smaller than the product obtained by multiplying the stated length times width. All dimensions are approximate and may vary with actual construction, and all floor plans and development plans are subject to change. The Unit will be delivered unfurnished, furniture will not be included with the Unit.

# THE COLLECTION<sup>®</sup>

## RESIDENCES

### 1B | FLOORS 3-4

INTERIOR	TERRACE	
<b>1,189 Sq Ft</b>	<b>67 Sq Ft</b>	1 BEDROOM
<b>110 Sq M</b>	<b>6 Sq M</b>	2 BATHS
		DEN

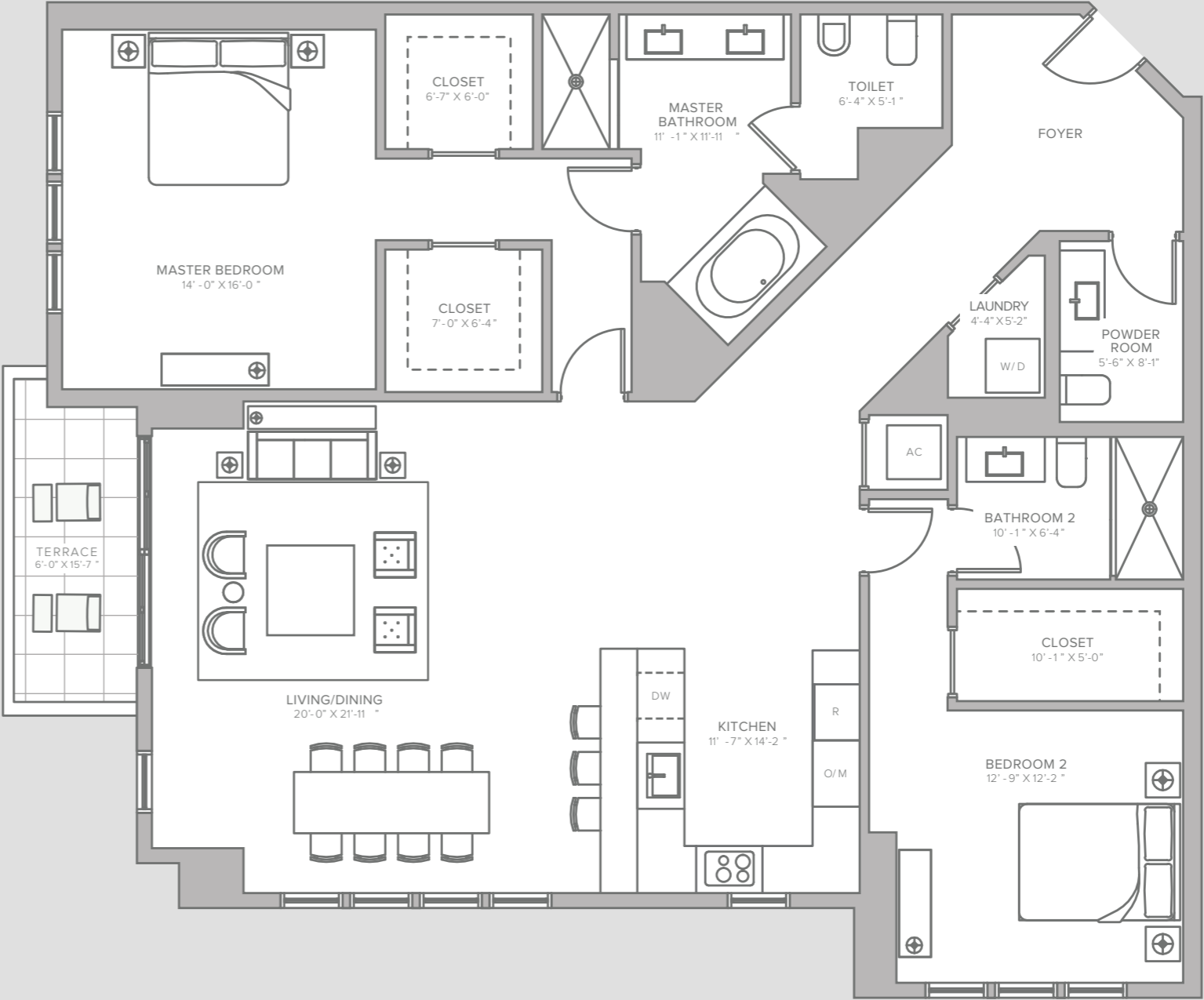
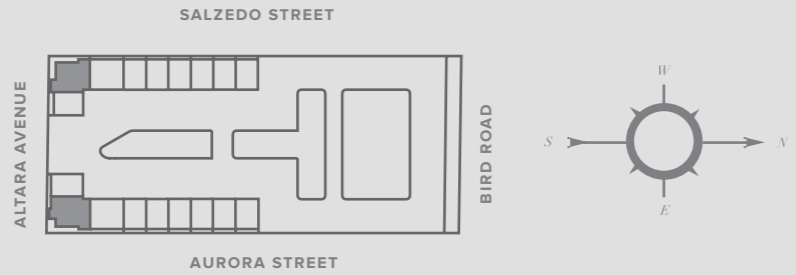


Stated dimensions are measured to the exterior boundaries of the exterior walls and the centerline of interior demising walls and in fact vary from the dimensions that would be determined by using the description and definition of the "Unit" set forth in the Declaration (which generally only includes the interior airspace between the perimeter walls and excludes interior structural components). For your reference, the area of the Unit, determined in accordance with those defined unit boundaries, is 1,130 square feet. Note that measurements of rooms set forth on this floor plan are generally taken at the greatest points of each given room (as if the room were a perfect rectangle), without regard for any cutouts. Accordingly, the area of the actual room will typically be smaller than the product obtained by multiplying the stated length times width. All dimensions are approximate and may vary with actual construction, and all floor plans and development plans are subject to change. The Unit will be delivered unfurnished, furniture will not be included with the Unit.

# THE COLLECTION RESIDENCES

## 2A | FLOORS 3-4

INTERIOR	TERRACE	
<b>1,992 Sq Ft</b>	<b>86 Sq Ft</b>	2 BEDROOMS 2.5 BATHS
<b>185 Sq M</b>	<b>8 Sq M</b>	

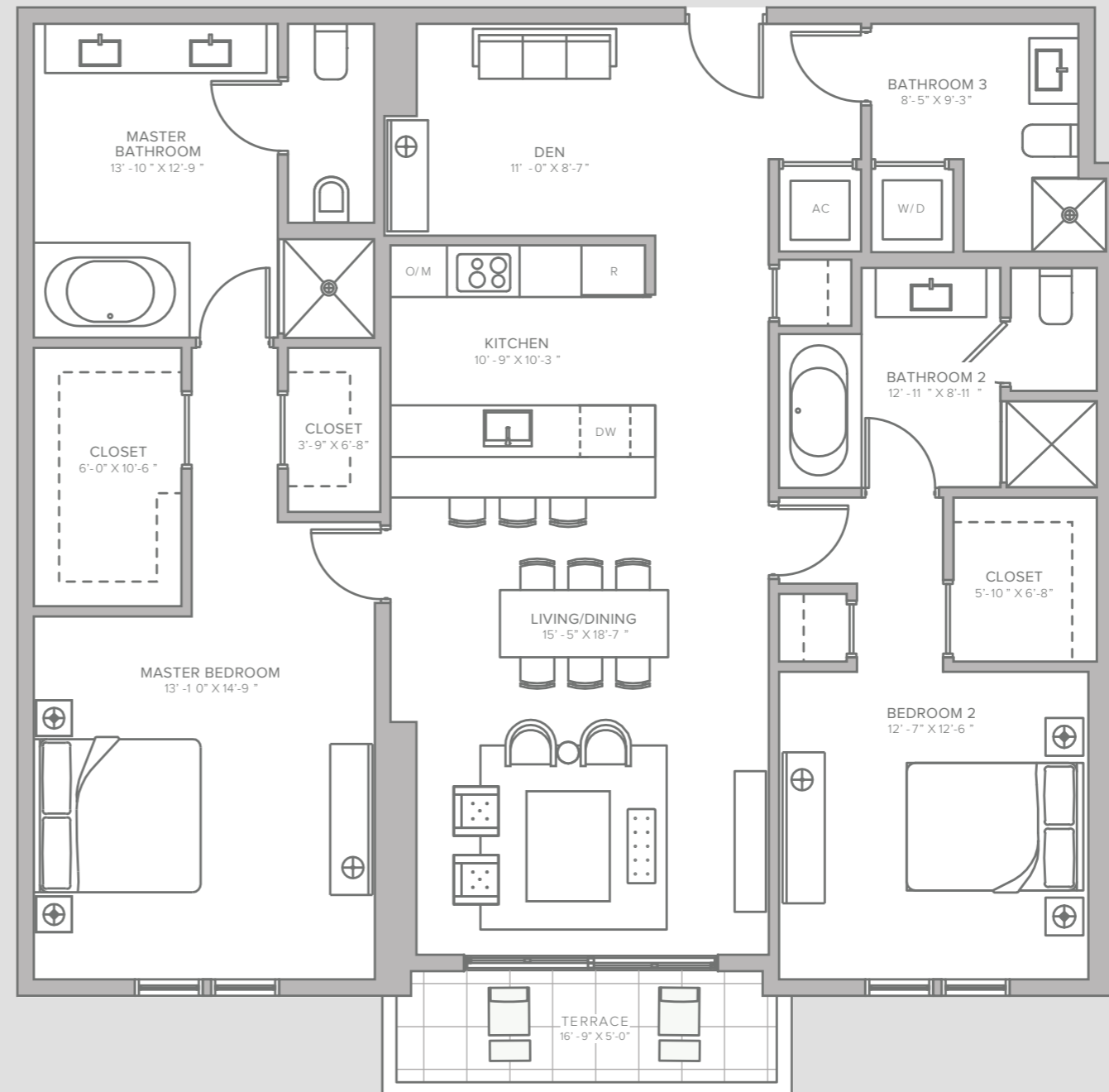
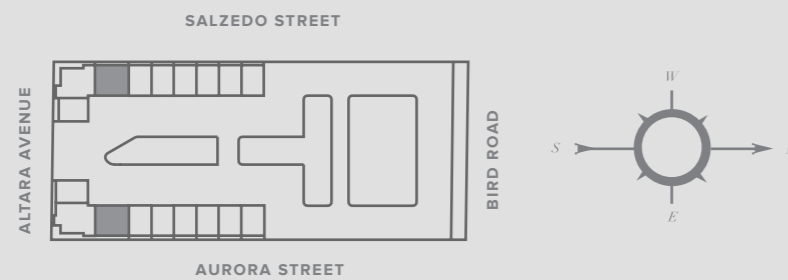


Stated dimensions are measured to the exterior boundaries of the exterior walls and the centerline of interior demising walls and in fact vary from the dimensions that would be determined by using the description and definition of the "Unit" set forth in the Declaration (which generally only includes the interior airspace between the perimeter walls and excludes interior structural components). For your reference, the area of the Unit, determined in accordance with those defined unit boundaries, is 1,890 square feet. Note that measurements of rooms set forth on this floor plan are generally taken at the greatest points of each given room (as if the room were a perfect rectangle), without regard for any cutouts. Accordingly, the area of the actual room will typically be smaller than the product obtained by multiplying the stated length times width. All dimensions are approximate and may vary with actual construction, and all floor plans and development plans are subject to change. The Unit will be delivered unfurnished, furniture will not be included with the Unit.

# THE COLLECTION<sup>®</sup> RESIDENCES

## 2B | FLOORS 3-4

INTERIOR	TERRACE	
<b>1,725 Sq Ft</b>	<b>81 Sq Ft</b>	2 BEDROOMS
<b>160 Sq M</b>	<b>8 Sq M</b>	3 BATHS
		DEN

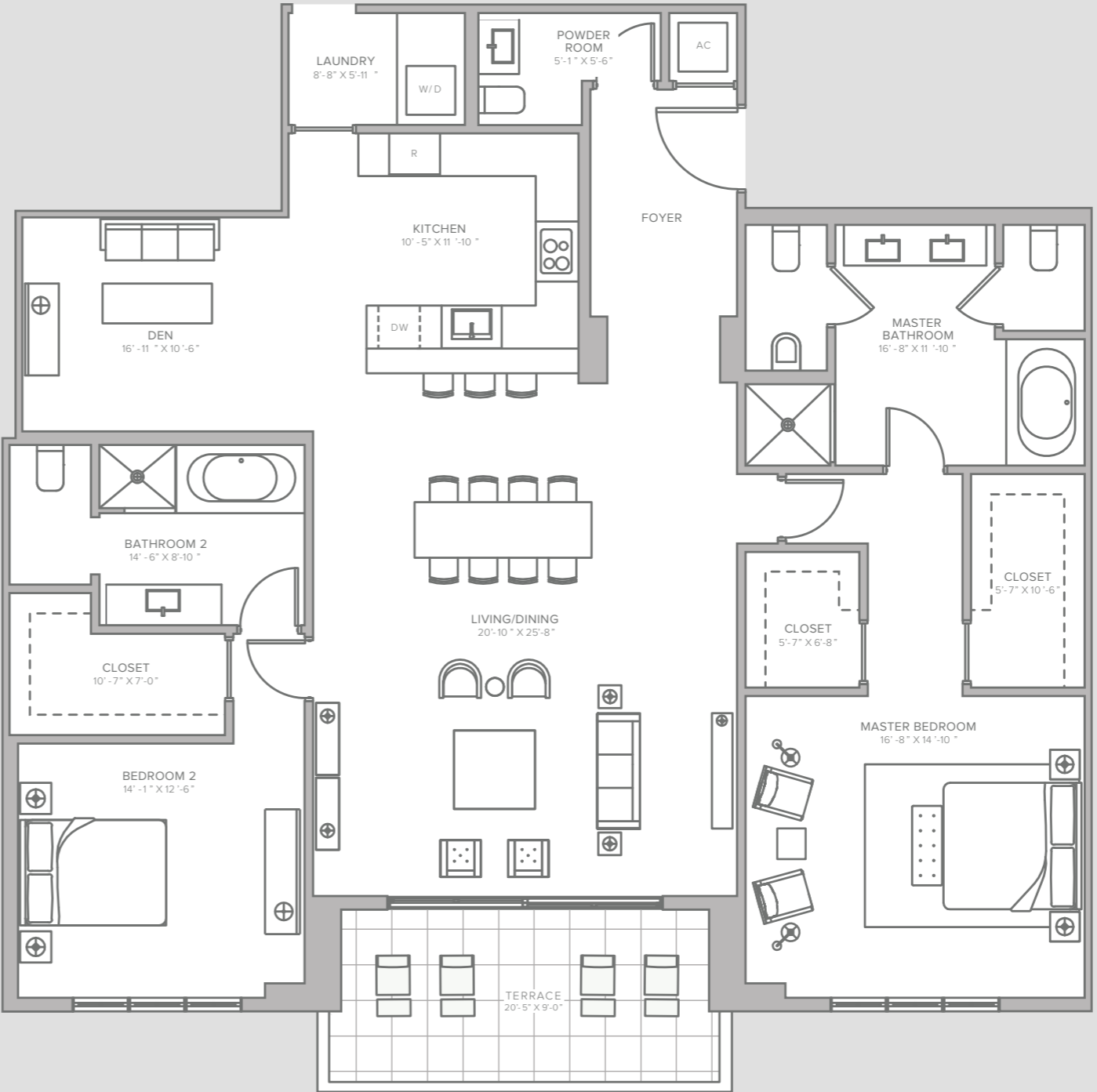
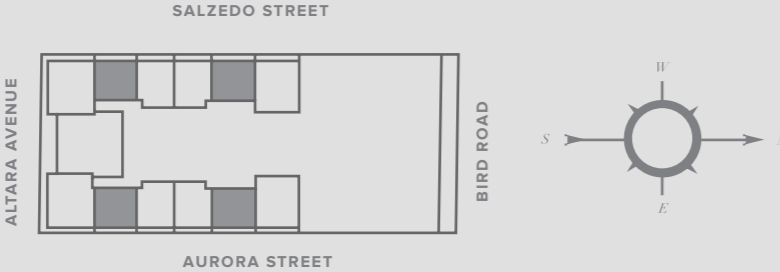


Stated dimensions are measured to the exterior boundaries of the exterior walls and the centerline of interior demising walls and in fact vary from the dimensions that would be determined by using the description and definition of the "Unit" set forth in the Declaration (which generally only includes the interior airspace between the perimeter walls and excludes interior structural components). For your reference, the area of the Unit, determined in accordance with those defined unit boundaries, is 1,650 square feet. Note that measurements of rooms set forth on this floor plan are generally taken at the greatest points of each given room (as if the room were a perfect rectangle), without regard for any cutouts. Accordingly, the area of the actual room will typically be smaller than the product obtained by multiplying the stated length times width. All dimensions are approximate and may vary with actual construction, and all floor plans and development plans are subject to change. The Unit will be delivered unfurnished, furniture will not be included with the Unit.

# THE COLLECTION<sup>®</sup> RESIDENCES

## 2C | FLOORS 5-10

INTERIOR	TERRACE	
<b>2,320 Sq Ft</b>	<b>172 Sq Ft</b>	2 BEDROOMS
<b>216 Sq M</b>	<b>16 Sq M</b>	2.5 BATHS
		DEN

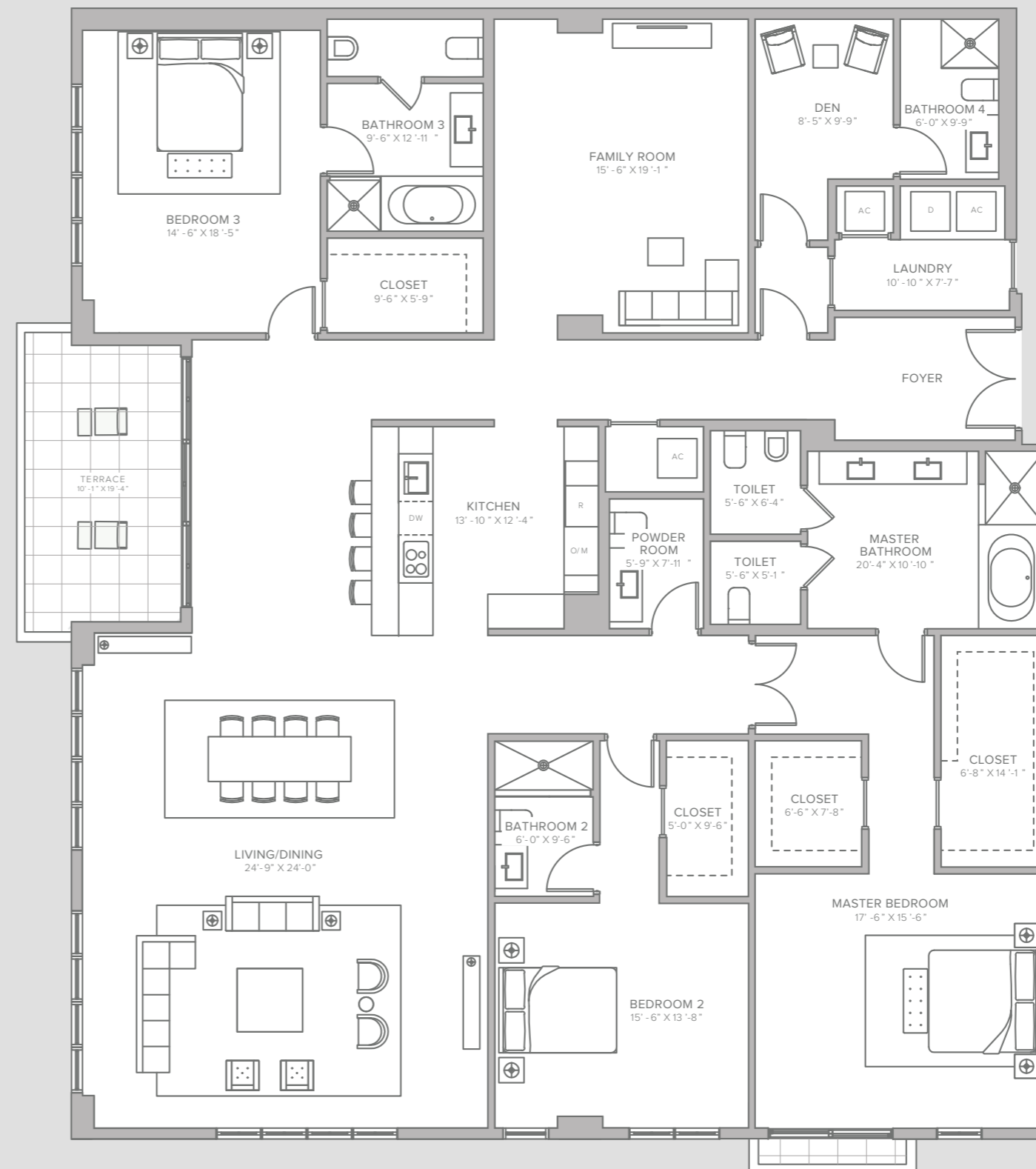
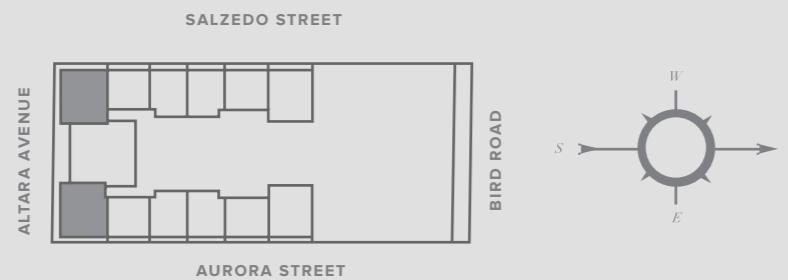


Stated dimensions are measured to the exterior boundaries of the exterior walls and the centerline of interior demising walls and in fact vary from the dimensions that would be determined by using the description and definition of the "Unit" set forth in the Declaration (which generally only includes the interior airspace between the perimeter walls and excludes interior structural components). For your reference, the area of the Unit, determined in accordance with those defined unit boundaries, is 2,120 square feet. Note that measurements of rooms set forth on this floor plan are generally taken at the greatest points of each given room (as if the room were a perfect rectangle), without regard for any cutouts. Accordingly, the area of the actual room will typically be smaller than the product obtained by multiplying the stated length times width. All dimensions are approximate and may vary with actual construction, and all floor plans and development plans are subject to change. The Unit will be delivered unfurnished, furniture will not be included with the Unit.

# THE COLLECTION<sup>®</sup> RESIDENCES

## 3A | FLOORS 5-10

INTERIOR	TERRACE	
<b>4,009 Sq Ft</b>	<b>196 Sq Ft</b>	3 BEDROOMS 4.5 BATHS DEN FAMILY ROOM
<b>372 Sq M</b>	<b>18 Sq M</b>	

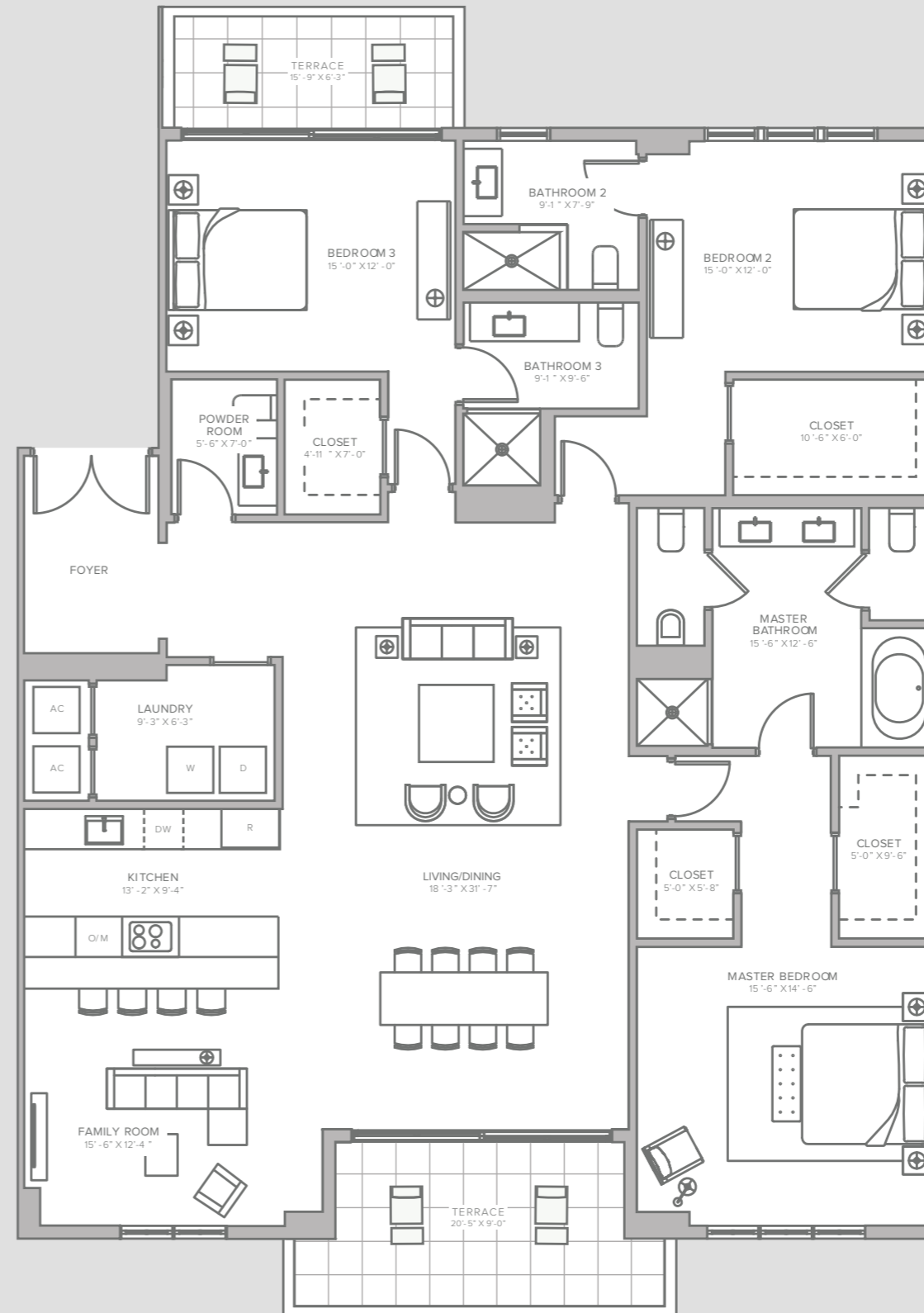
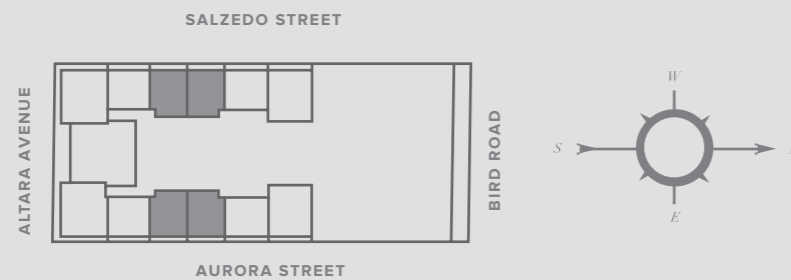


Stated dimensions are measured to the exterior boundaries of the exterior walls and the centerline of interior demising walls and in fact vary from the dimensions that would be determined by using the description and definition of the "Unit" set forth in the Declaration (which generally only includes the interior airspace between the perimeter walls and excludes interior structural components). For your reference, the area of the Unit, determined in accordance with those defined unit boundaries, is 3,770 square feet. Note that measurements of rooms set forth on this floor plan are generally taken at the greatest points of each given room (as if the room were a perfect rectangle), without regard for any cutouts. Accordingly, the area of the actual room will typically be smaller than the product obtained by multiplying the stated length times width. All dimensions are approximate and may vary with actual construction, and all floor plans and development plans are subject to change. The Unit will be delivered unfurnished, furniture will not be included with the Unit.

# THE COLLECTION RESIDENCES

## 3B | FLOORS 5-10

INTERIOR	TERRACE	
<b>2,635 Sq Ft</b>	<b>255 Sq Ft</b>	3 BEDROOMS
<b>245 Sq M</b>	<b>24 Sq M</b>	3.5 BATHS
		FAMILY ROOM



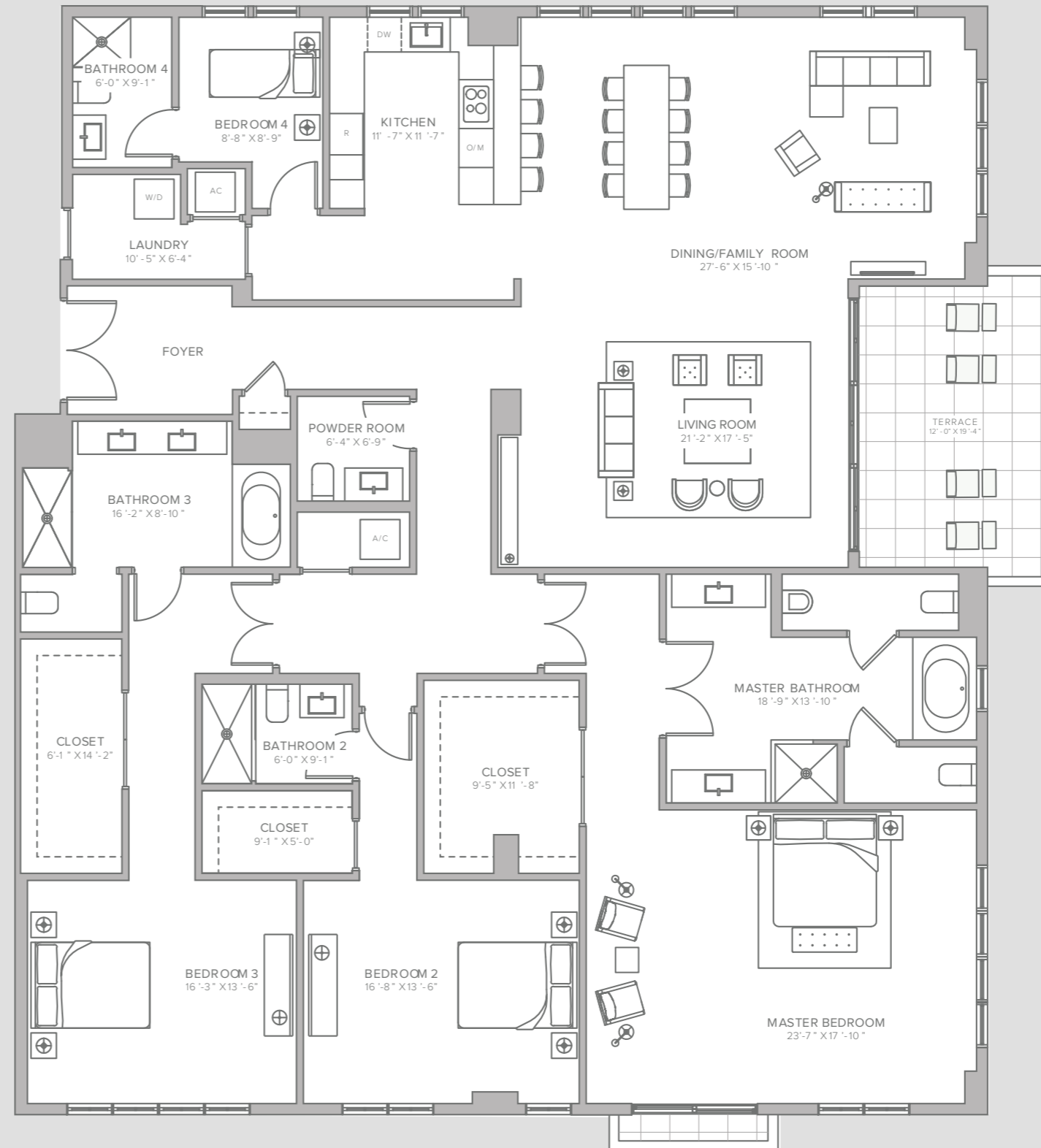
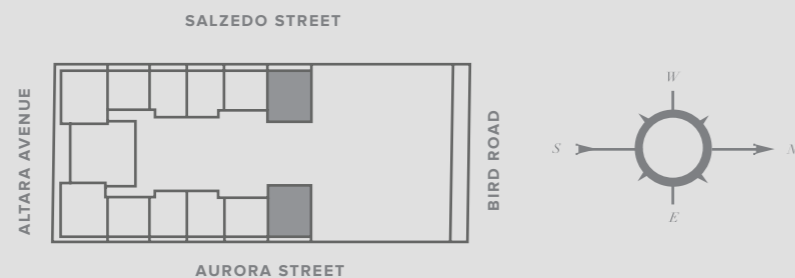
Stated dimensions are measured to the exterior boundaries of the exterior walls and the centerline of interior demising walls and in fact vary from the dimensions that would be determined by using the description and definition of the "Unit" set forth in the Declaration (which generally only includes the interior airspace between the perimeter walls and excludes interior structural components). For your reference, the area of the Unit, determined in accordance with those defined unit boundaries, is 2,460 square feet. Note that measurements of rooms set forth on this floor plan are generally taken at the greatest points of each given room (as if the room were a perfect rectangle), without regard for any cutouts. Accordingly, the area of the actual room will typically be smaller than the product obtained by multiplying the stated length times width. All dimensions are approximate and may vary with actual construction, and all floor plans and development plans are subject to change. The Unit will be delivered unfurnished, furniture will not be included with the Unit.



# THE COLLECTION<sup>®</sup> RESIDENCES

## 3C | FLOORS 5-10

INTERIOR	TERRACE	
<b>3,800 Sq Ft</b>	<b>233 Sq Ft</b>	3 BEDROOMS 4.5 BATHS FAMILY ROOM
<b>353 Sq M</b>	<b>22 Sq M</b>	



Stated dimensions are measured to the exterior boundaries of the exterior walls and the centerline of interior demising walls and in fact vary from the dimensions that would be determined by using the description and definition of the "Unit" set forth in the Declaration (which generally only includes the interior airspace between the perimeter walls and excludes interior structural components). For your reference, the area of the Unit, determined in accordance with those defined unit boundaries, is 3,560 square feet. Note that measurements of rooms set forth on this floor plan are generally taken at the greatest points of each given room (as if the room were a perfect rectangle), without regard for any cutouts. Accordingly, the area of the actual room will typically be smaller than the product obtained by multiplying the stated length times width. All dimensions are approximate and may vary with actual construction, and all floor plans and development plans are subject to change. The Unit will be delivered unfurnished, furniture will not be included with the Unit.