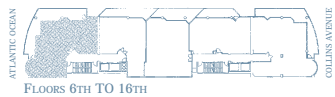
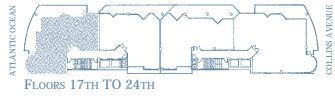


## AREAS

Residence	1864 S.F.	(173.35 S.M.)
Balcony	645 S.F.	(59.99 S.M.)
Total	2509 S.F.	(233.34 S.M.)



Oral representations cannot be relied upon as correctly stating the representations of the developer. For correct representations, make reference to this brochure and to the documents required by section 718.503, Florida Statutes, to be furnished by a developer to a buyer or lessee.

## AREAS

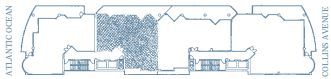
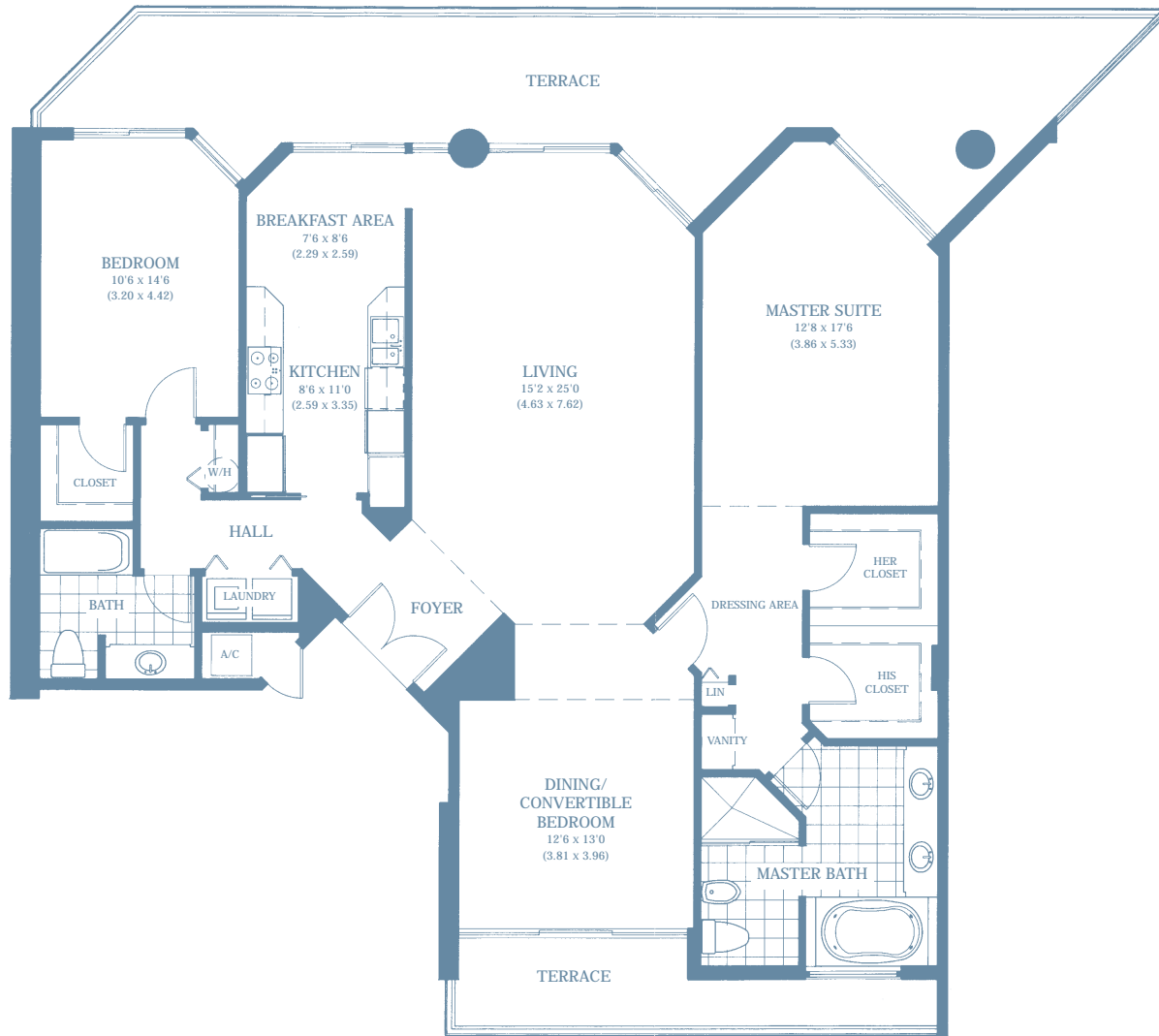
Residence	1864 S.F.	(173.35 S.M.)
Balcony	745 S.F.	(69.29 S.M.)
Total	2609 S.F.	(242.64 S.M.)



Oral representations cannot be relied upon as correctly stating the representations of the developer. For correct representations, make reference to this brochure and to the documents required by section 718.503, Florida Statutes, to be furnished by a developer to a buyer or lessee.

## AREAS

Residence	1750 S.F.	(162.75 S.M.)
Balcony	529 S.F.	(44.19 S.M.)
Total	2279 S.F.	(211.94 S.M.)



Oral representations cannot be relied upon as correctly stating the representations of the developer. For correct representations, make reference to this brochure and to the documents required by section 718.503, Florida Statutes, to be furnished by a developer to a buyer or lessee.

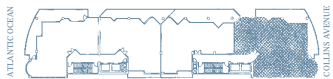
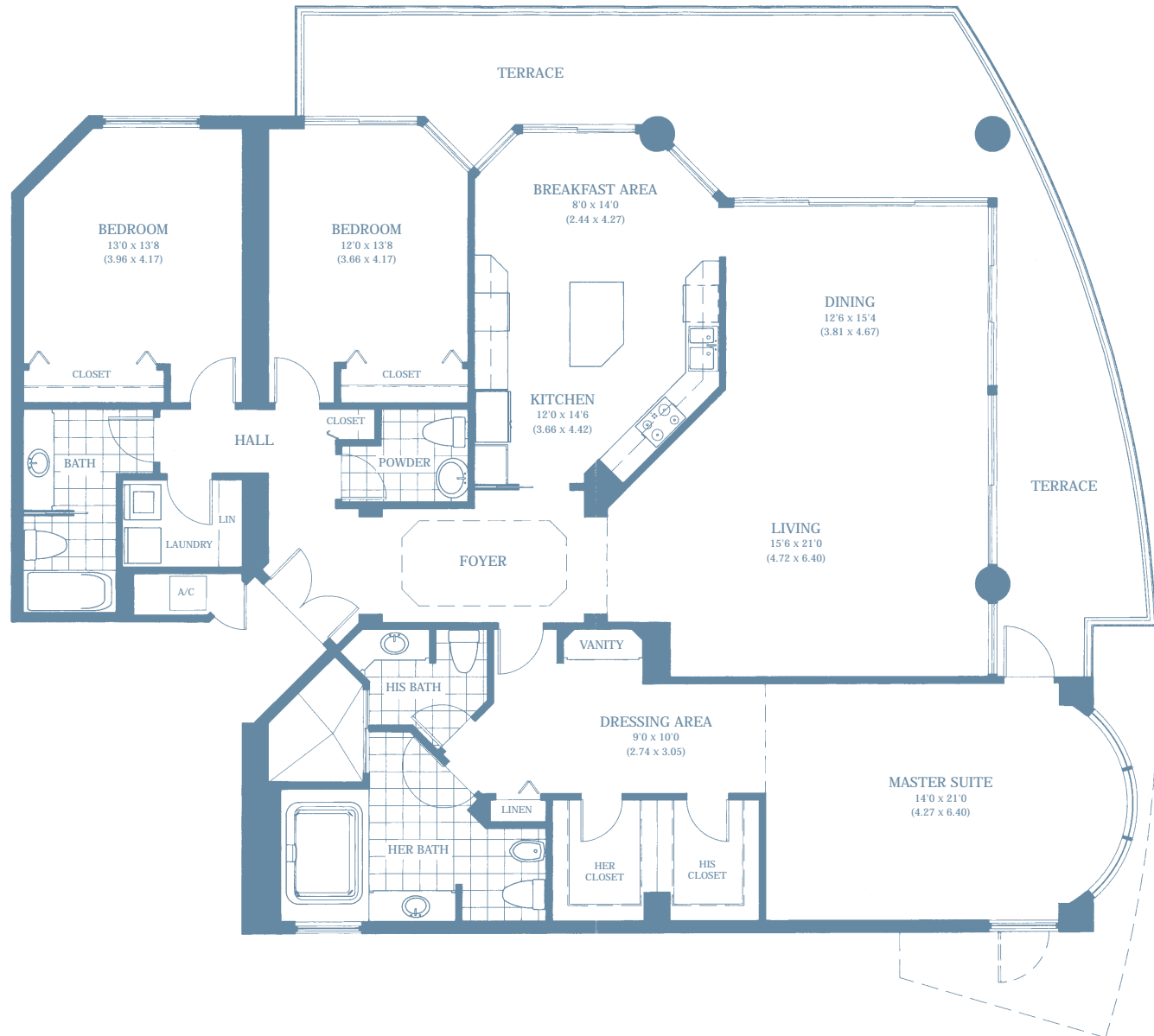
AREAS		
Residence	1875 S.F.	(174.37 S.M.)
Balcony	640 S.F.	(59.52 S.M.)
Total	2515 S.F.	(233.89 S.M.)



Oral representations cannot be relied upon as correctly stating the representations of the developer. For correct representations, make reference to this brochure and to the documents required by section 718.503, Florida Statutes, to be furnished by a developer to a buyer or lessee.

## AREAS

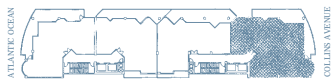
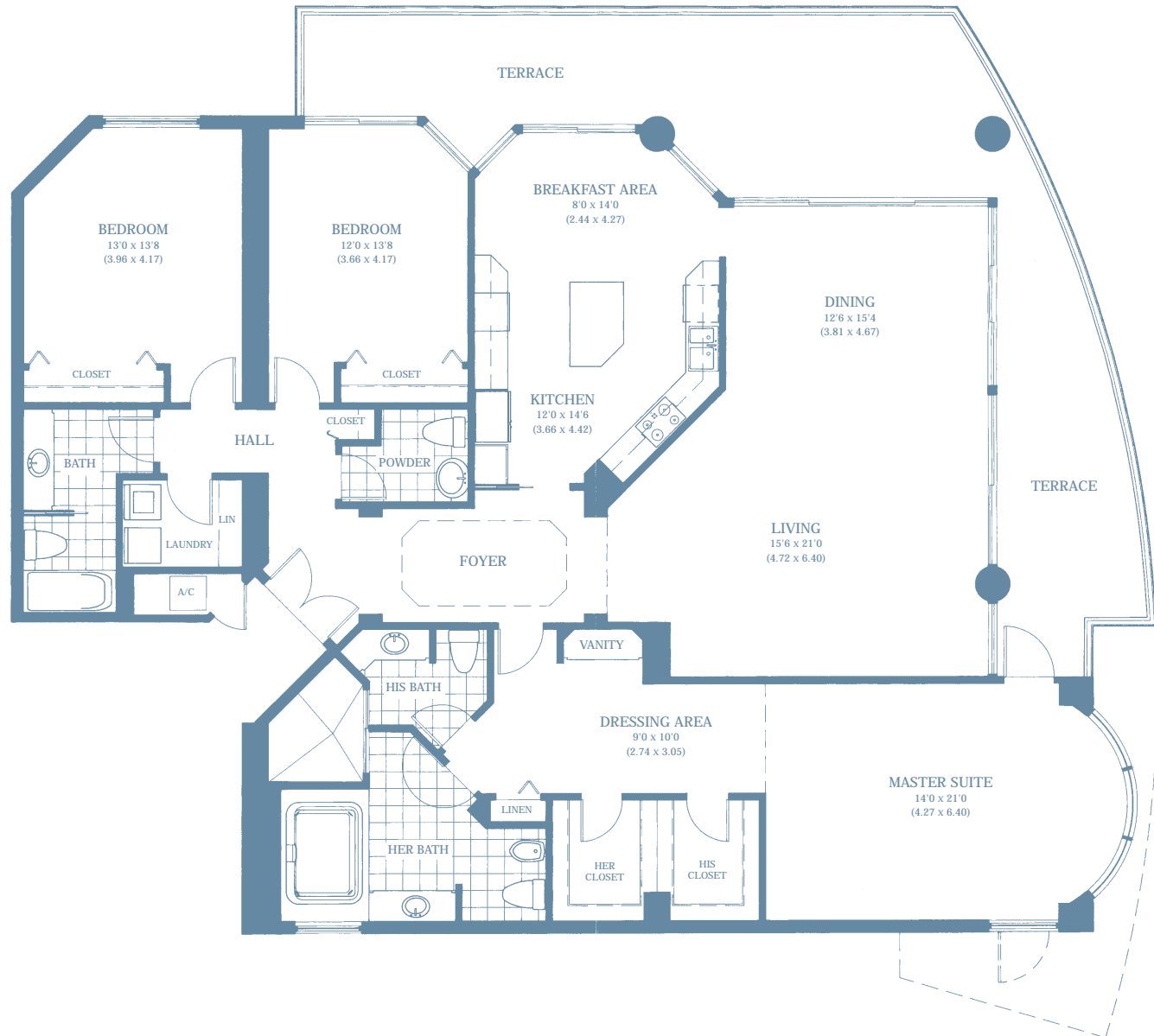
Residence	2505 S.F.	(232.96 S.M.)
Balcony	635 S.F.	(59.05 S.M.)
Total	3140 S.F.	(292.01 S.M.)



Oral representations cannot be relied upon as correctly stating the representations of the developer. For correct representations, make reference to this brochure and to the documents required by section 718.503, Florida Statutes, to be furnished by a developer to a buyer or lessee.

### AREAS

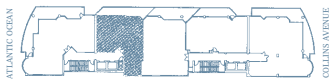
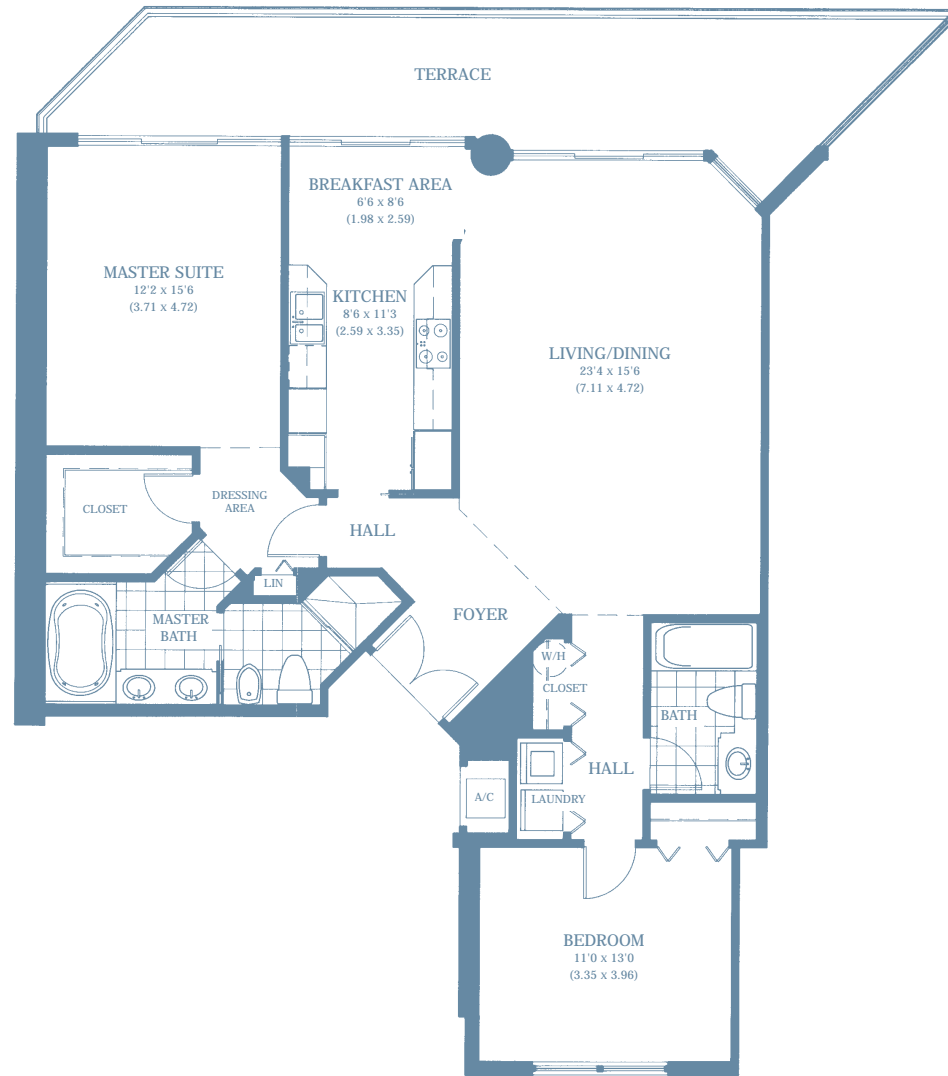
Residence	2505 S.F.	(232.96 S.M.)
Balcony	735 S.F.	(68.35 S.M.)
Total	3240 S.F.	(301.01 S.M.)



Oral representations cannot be relied upon as correctly stating the representations of the developer. For correct representations, make reference to this brochure and to the documents required by section 718.503, Florida Statutes, to be furnished by a developer to a buyer or lessee.

## AREAS

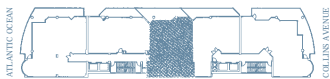
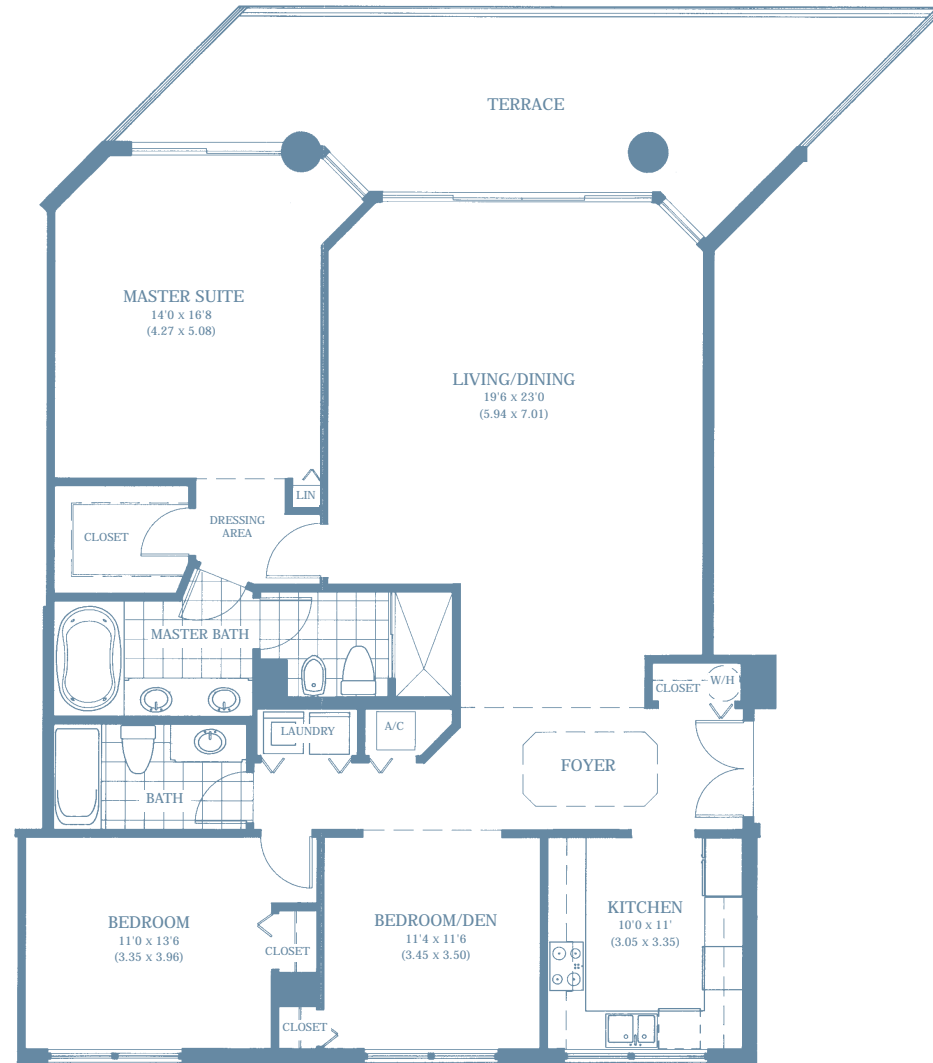
Residence	1355 S.F.	(126.01 S.M.)
Balcony	285 S.F.	(26.50 S.M.)
Total	1640 S.F.	(152.51 S.M.)



Oral representations cannot be relied upon as correctly stating the representations of the developer. For correct representations, make reference to this brochure and to the documents required by section 718.503, Florida Statutes, to be furnished by a developer to a buyer or lessee.

## AREAS

Residence	1635 S.F.	(152.05 S.M.)
Balcony	325 S.F.	(30.22 S.M.)
Total	1960 S.F.	(182.27 S.M.)

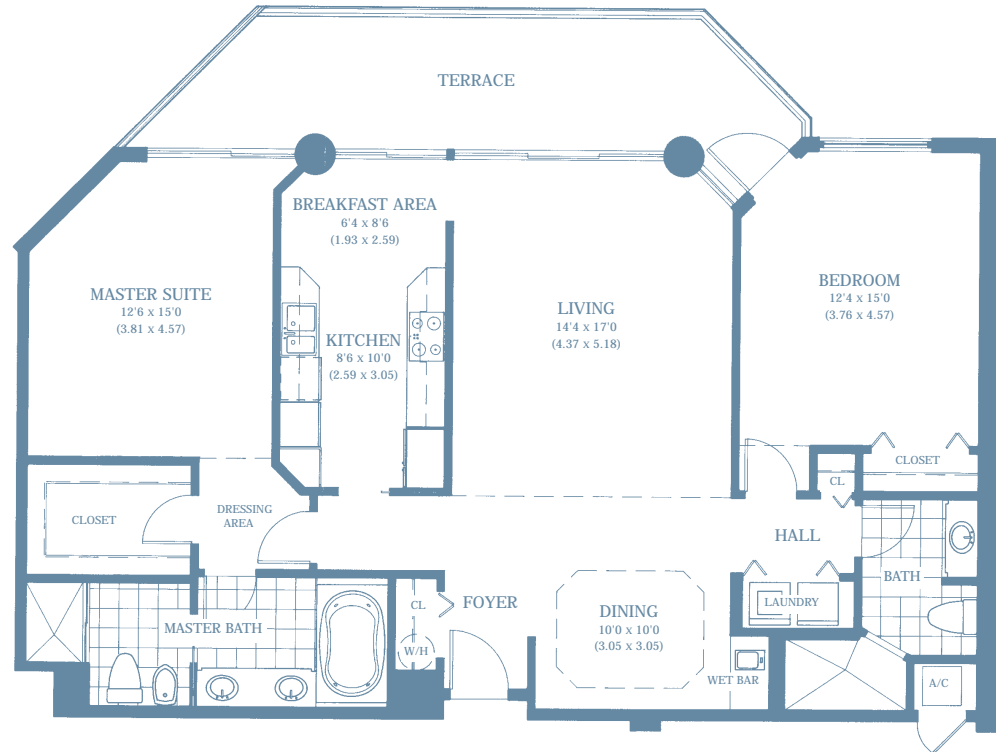


Oral representations cannot be relied upon as correctly stating the representations of the developer. For correct representations, make reference to this brochure and to the documents required by section 718.503, Florida Statutes, to be furnished by a developer to a buyer or lessee.



## AREAS

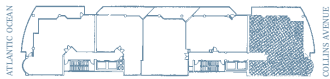
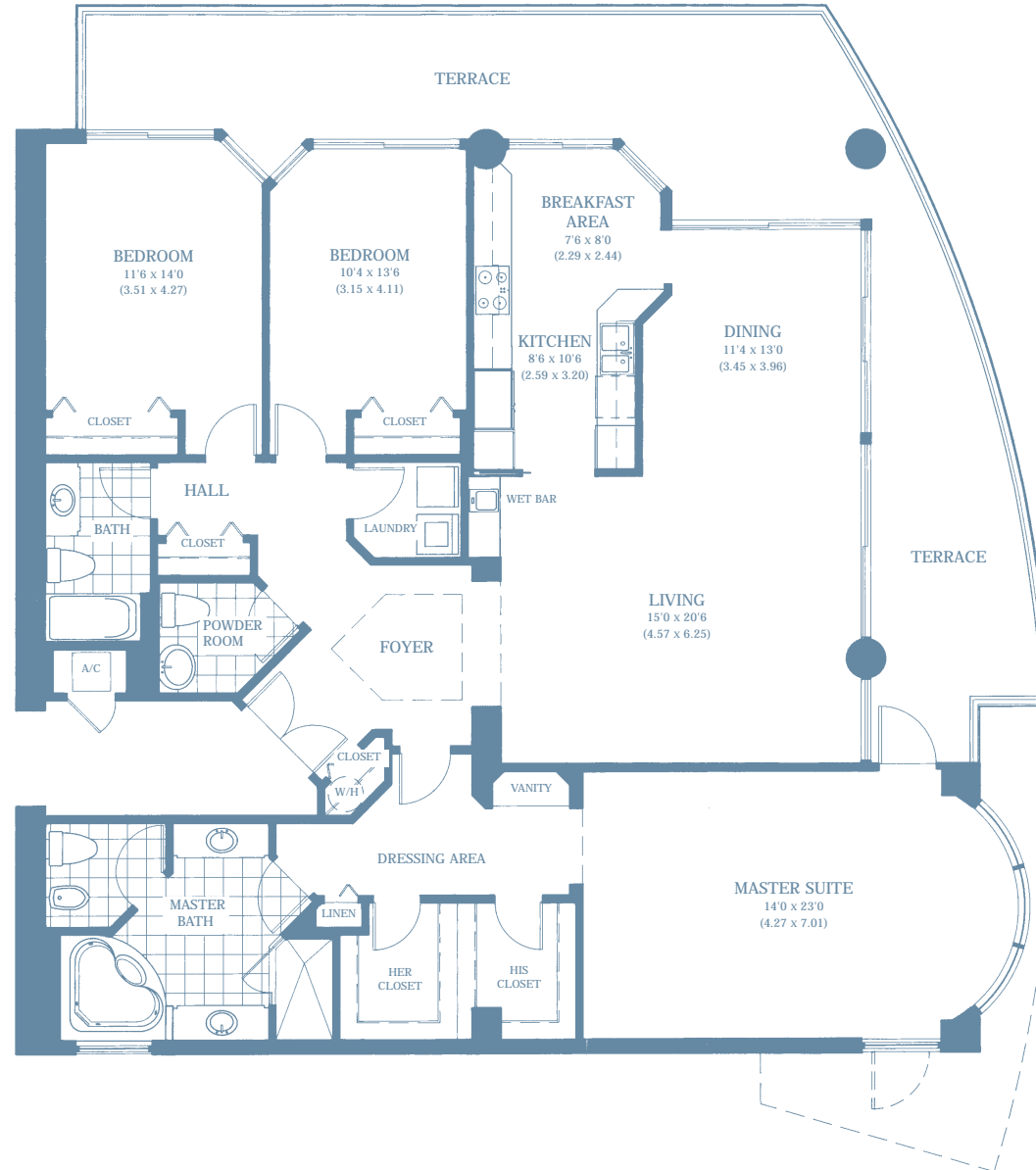
Residence	1410 S.F.	(131.13 S.M.)
Balcony	215 S.F.	(19.99 S.M.)
Total	1625 S.F.	(151.12 S.M.)



Oral representations cannot be relied upon as correctly stating the representations of the developer. For correct representations, make reference to this brochure and to the documents required by section 718.503, Florida Statutes, to be furnished by a developer to a buyer or lessee.

## AREAS

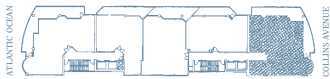
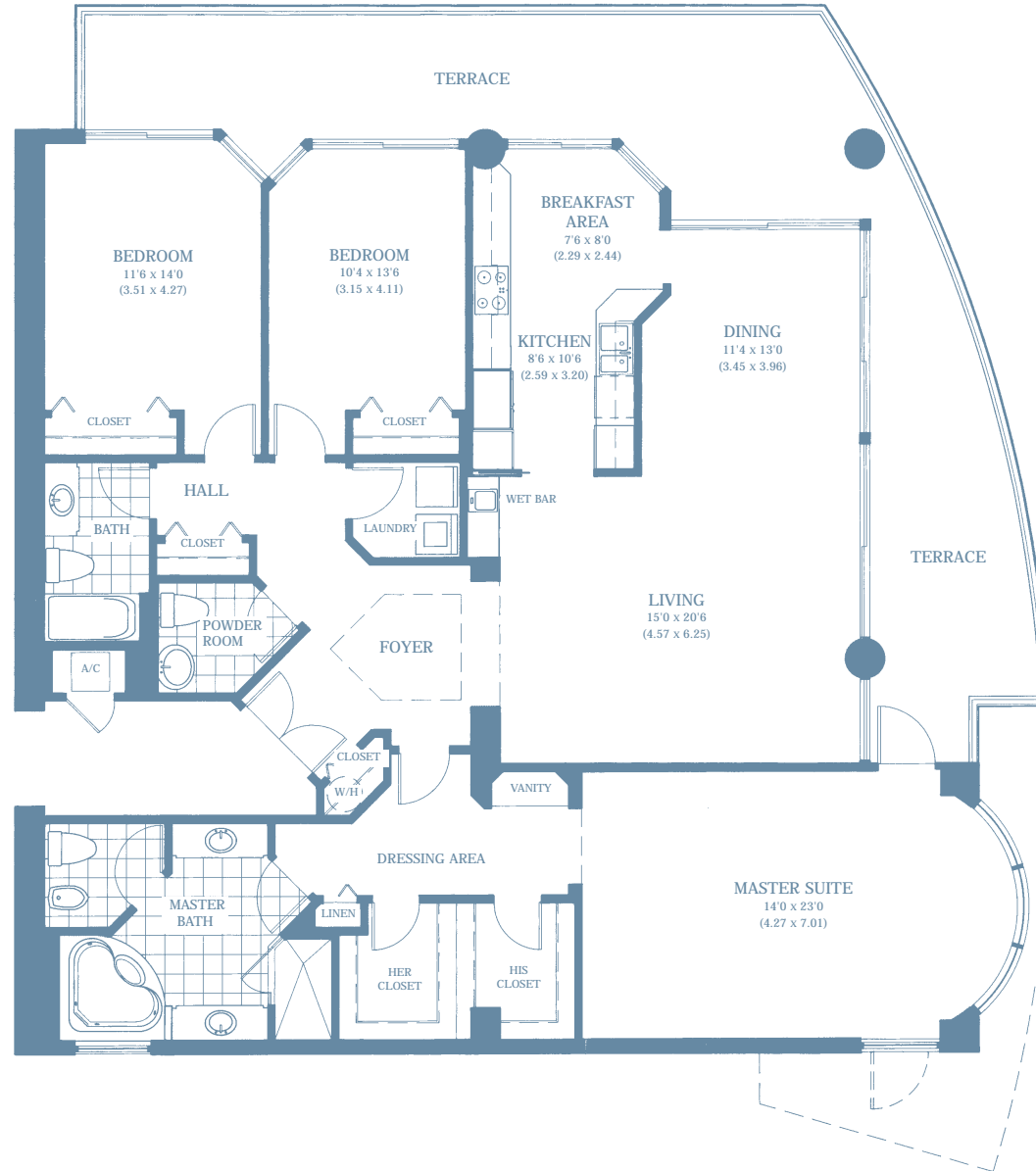
Residence	2060 S.F.	(191.58 S.M.)
Balcony	580 S.F.	(53.94 S.M.)
Total	2640 S.F.	(245.52 S.M.)



Oral representations cannot be relied upon as correctly stating the representations of the developer. For correct representations, make reference to this brochure and to the documents required by section 718.503, Florida Statutes, to be furnished by a developer to a buyer or lessee.

## AREAS

Residence	2060 S.F.	(191.58 S.M.)
Balcony	680 S.F.	(63.24 S.M.)
Total	2740 S.F.	(254.82 S.M.)



Oral representations cannot be relied upon as correctly stating the representations of the developer. For correct representations, make reference to this brochure and to the documents required by section 718.503, Florida Statutes, to be furnished by a developer to a buyer or lessee.