



# Beatrice Row

TOWNHOMES

CORAL GABLES | FLORIDA



BEATRICE ROW TOWN HOMES

CLASSIC EUROPEAN REMINISCENCE



*“A classic is a book  
that doesn’t have to be written again.”*

W. E. B. DU BOIS

























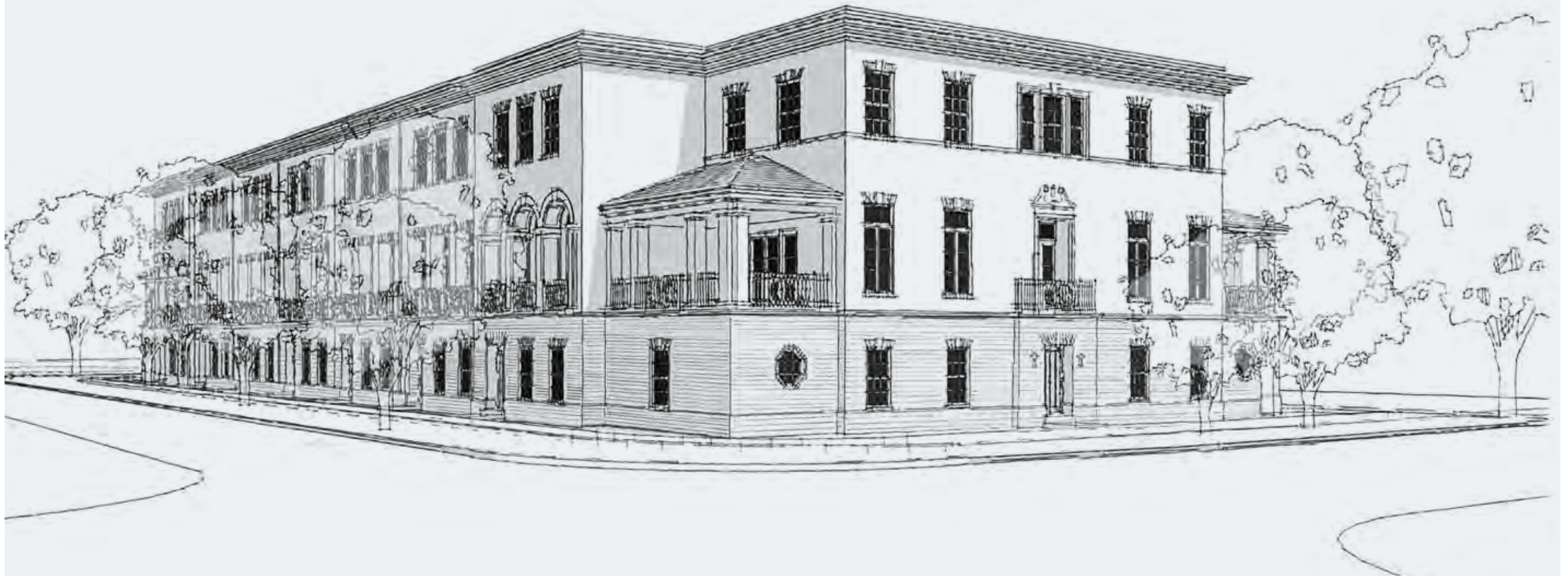


*“Architecture is the learned game, correct and  
magnificent, of forms assembled in the light.”*

LE CORBUSIER

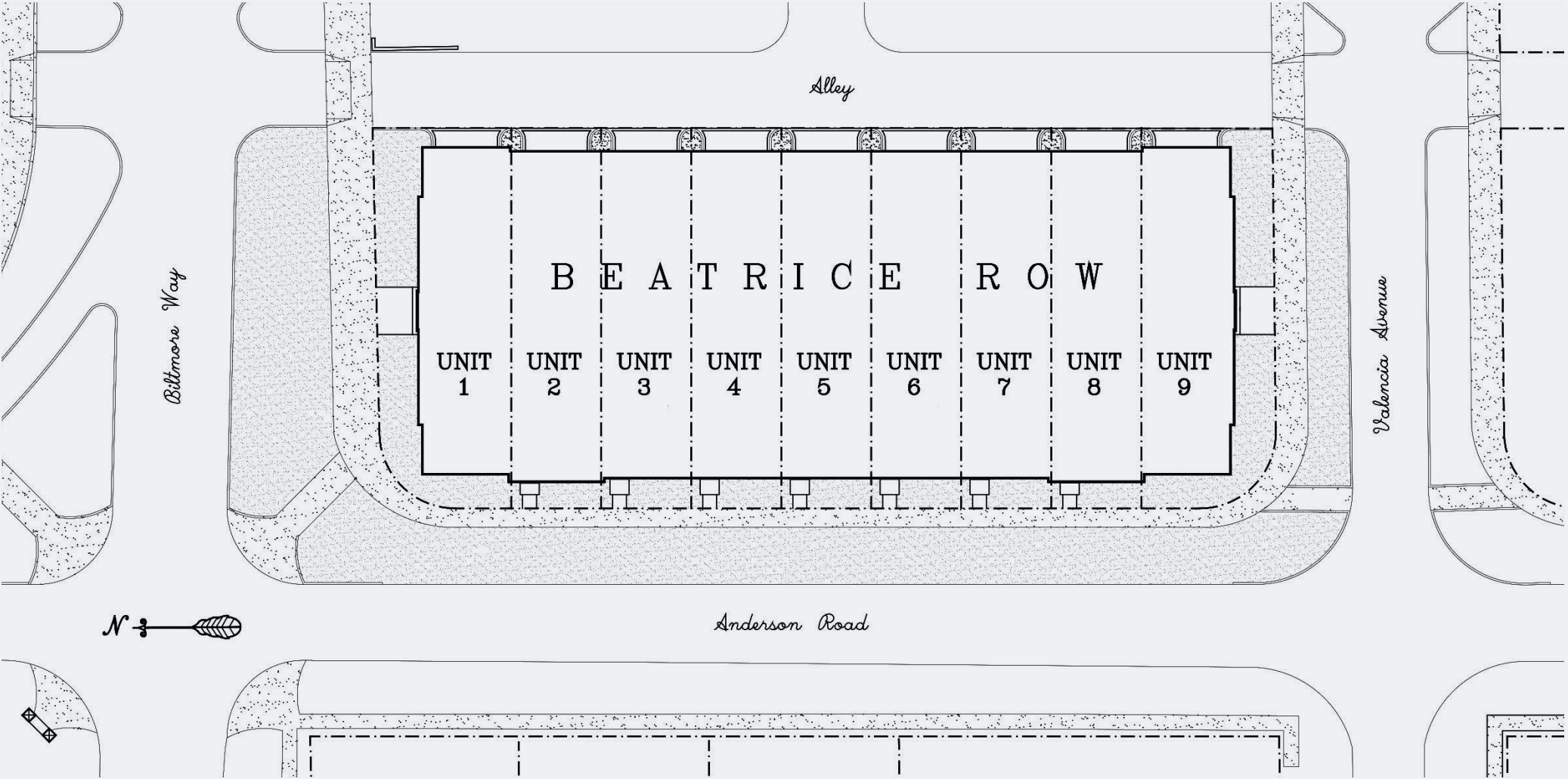


# FLOOR PLANS





SITE PLAN





ANDERSON ROAD ELEVATION







# TOWNHOME I

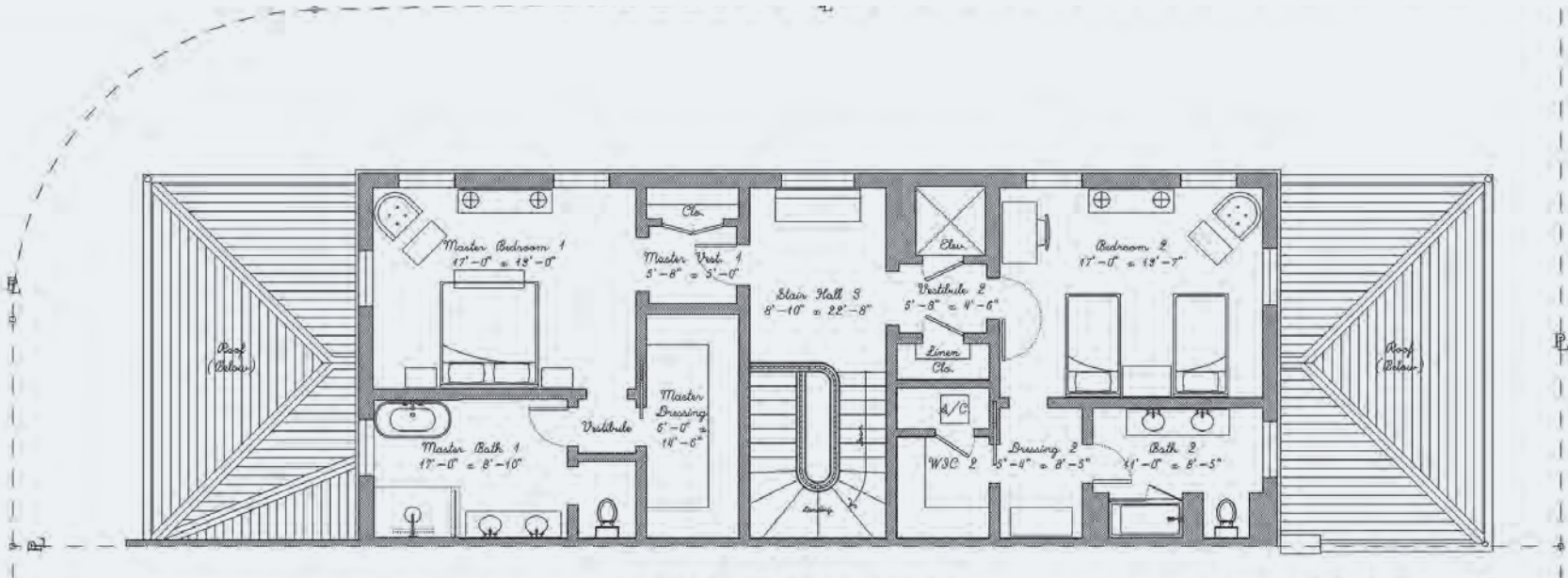
## UNITS 1 & 9

4 BEDROOMS/4.5 BATHROOMS

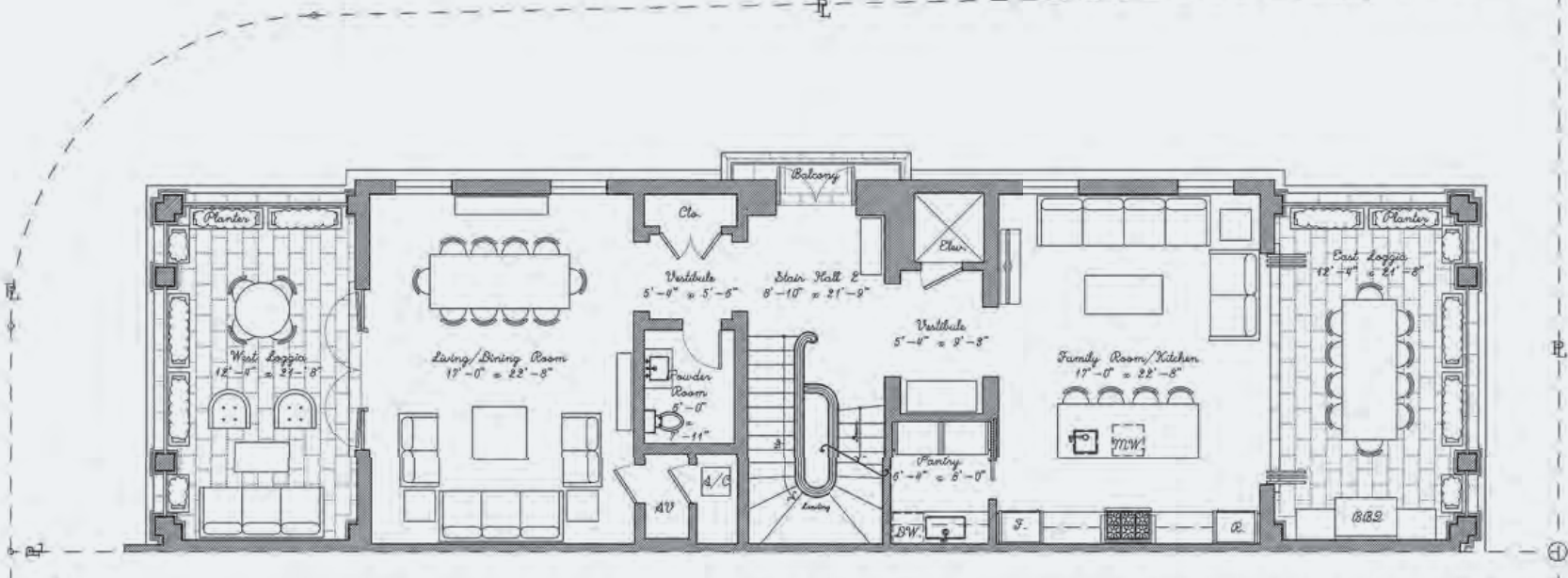
AC SPACE	4,132 SQ FT
TERRACE	674 SQ FT
GARAGE	731 SQ FT
TOTAL SQ FT	5,537 SQ FT



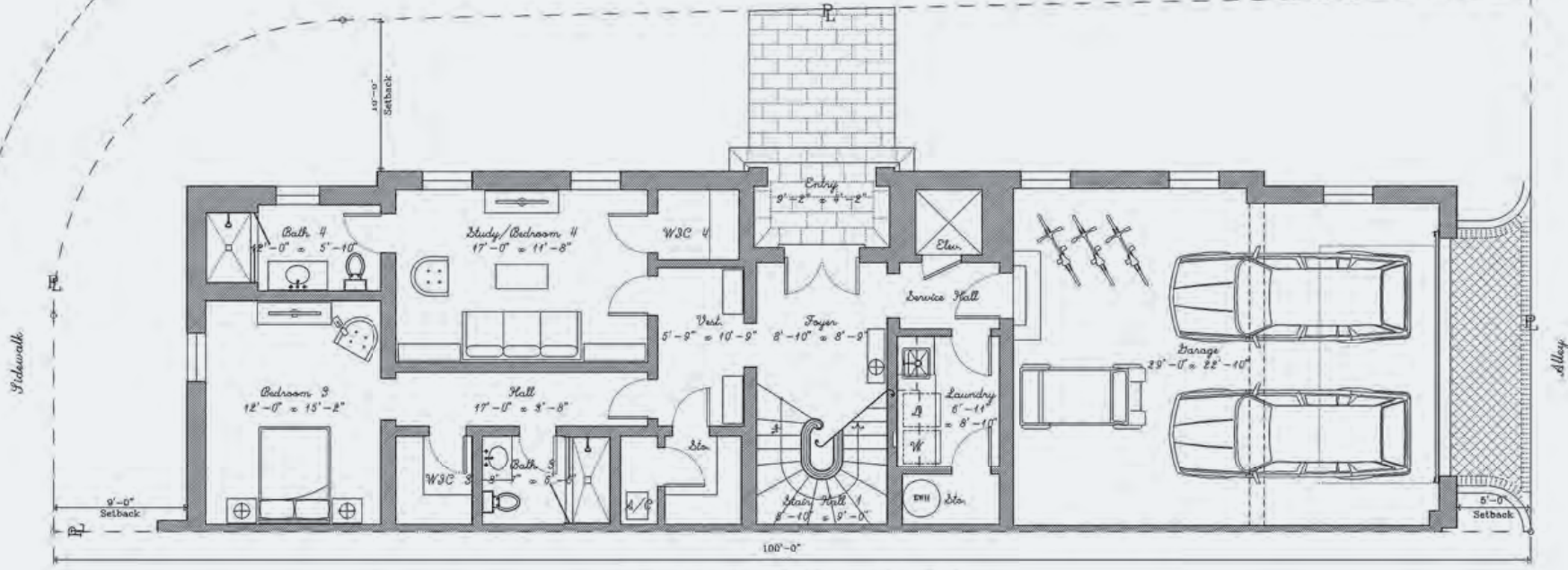
THIRD FLOOR PLAN



SECOND FLOOR PLAN



FIRST FLOOR PLAN





UNIT 5



UNIT 3, 4, 6 & 7



# TOWNHOME II

UNITS 3 TO 7

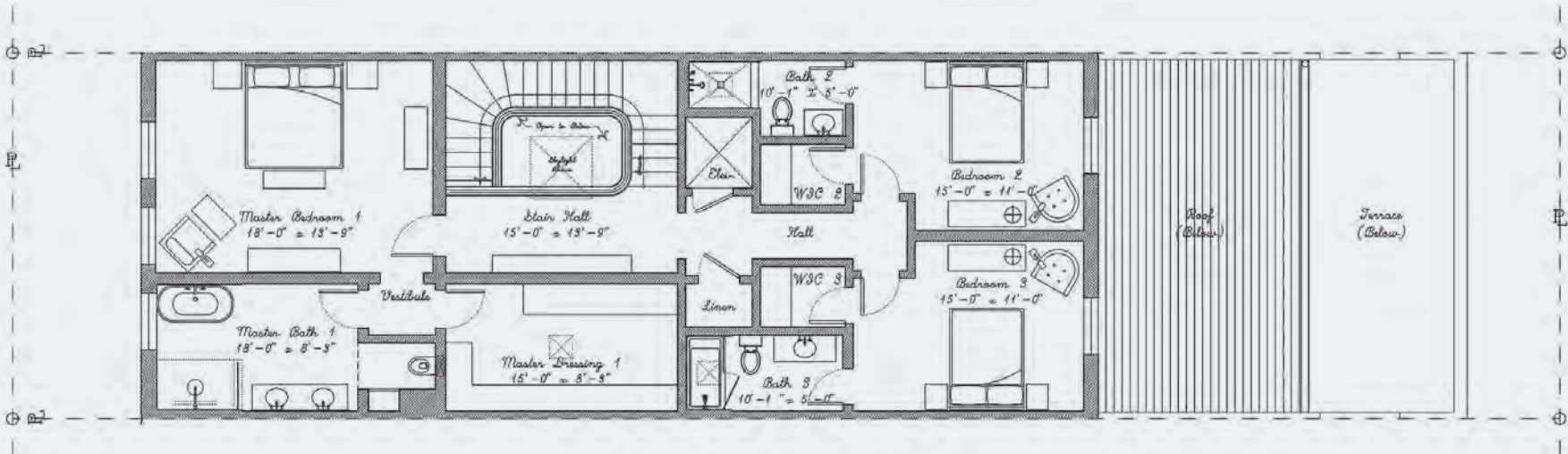
4 BEDROOMS/4.5 BATHROOMS

AC SPACE	3,781 SQ FT
TERRACE	699 SQ FT
GARAGE	1,084 SQ FT
TOTAL SQ FT	5,564 SQ FT

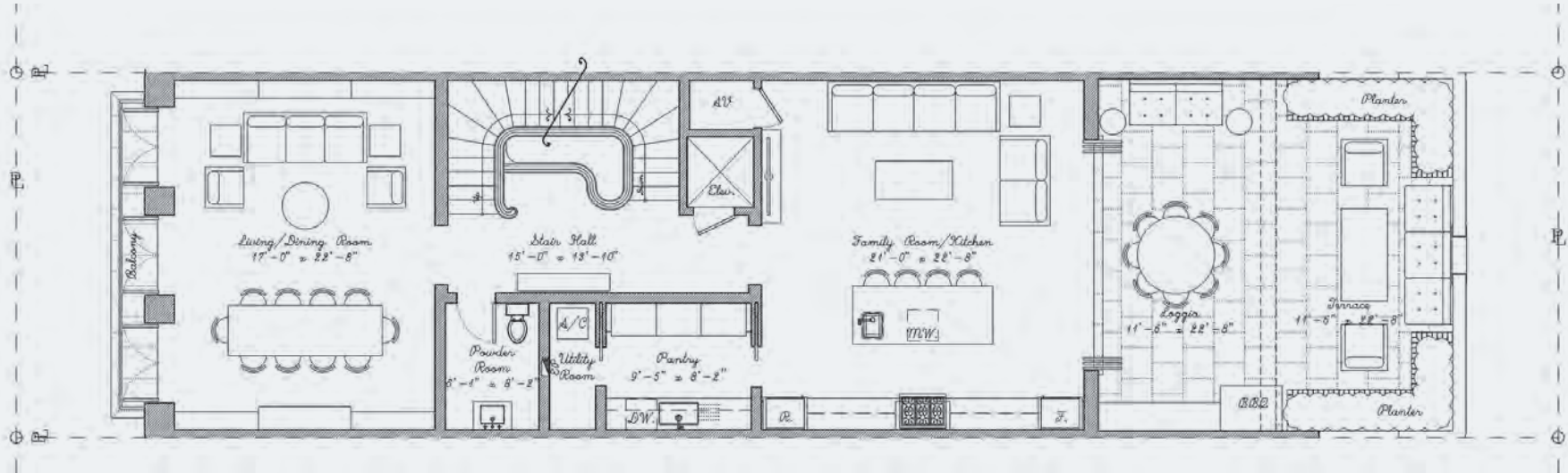


TOWN HOUSE II

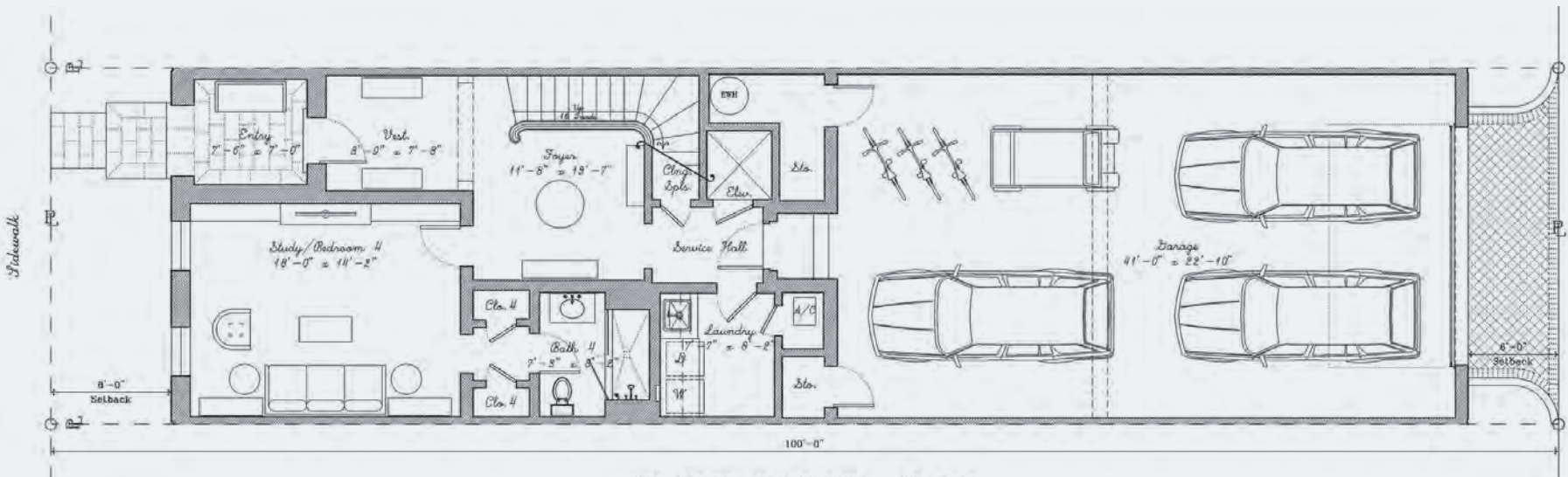
THIRD FLOOR PLAN



SECOND FLOOR PLAN



FIRST FLOOR PLAN







# TOWNHOME III

## UNITS 2 & 8

4 BEDROOMS/4.5 BATHROOMS

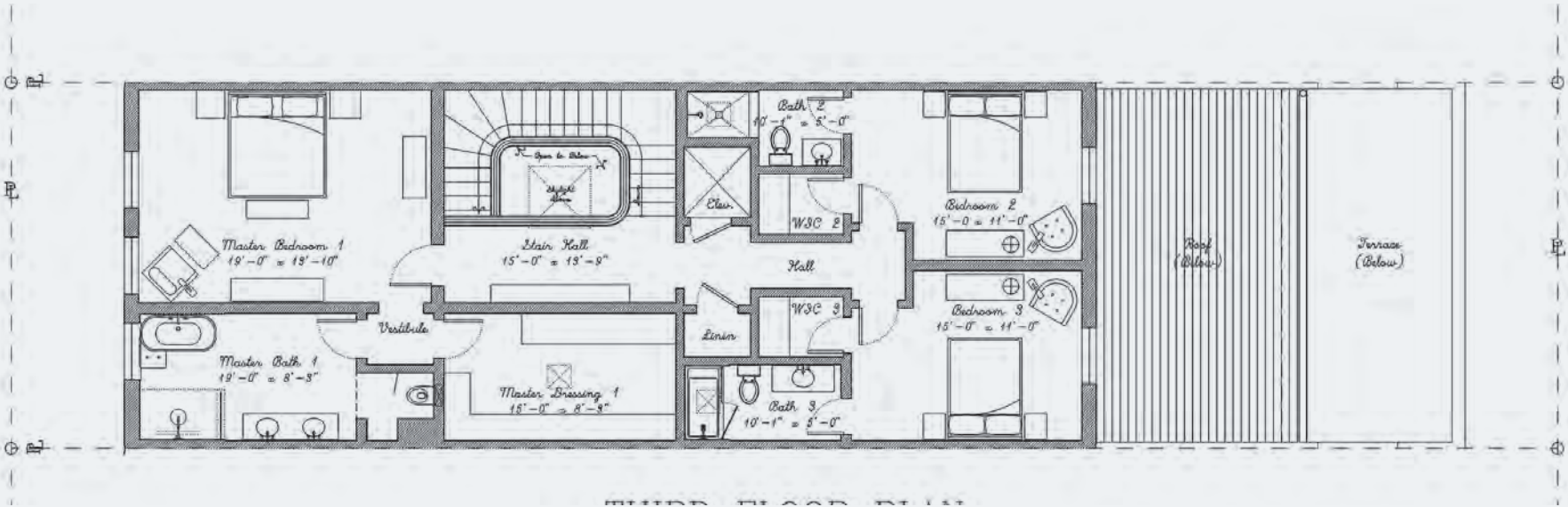
---

AC SPACE	3,853 SQ FT
COV. TERRACE	699 SQ FT
GARAGE	1,084 SQ FT
TOTAL SQ FT	5,636 SQ FT

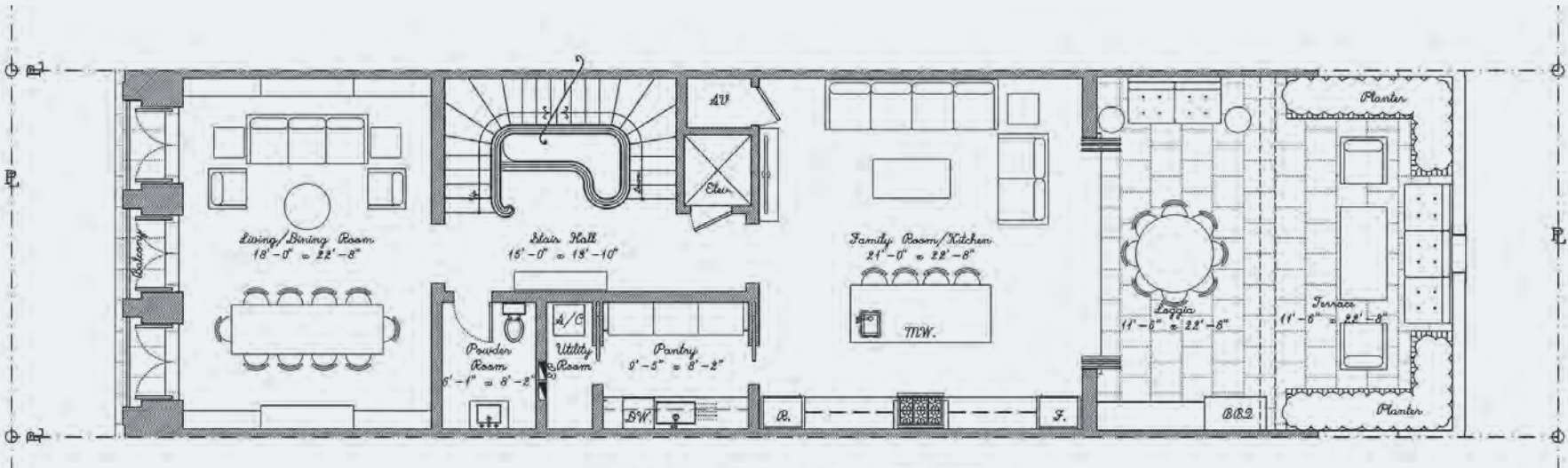


TOWN HOUSE III

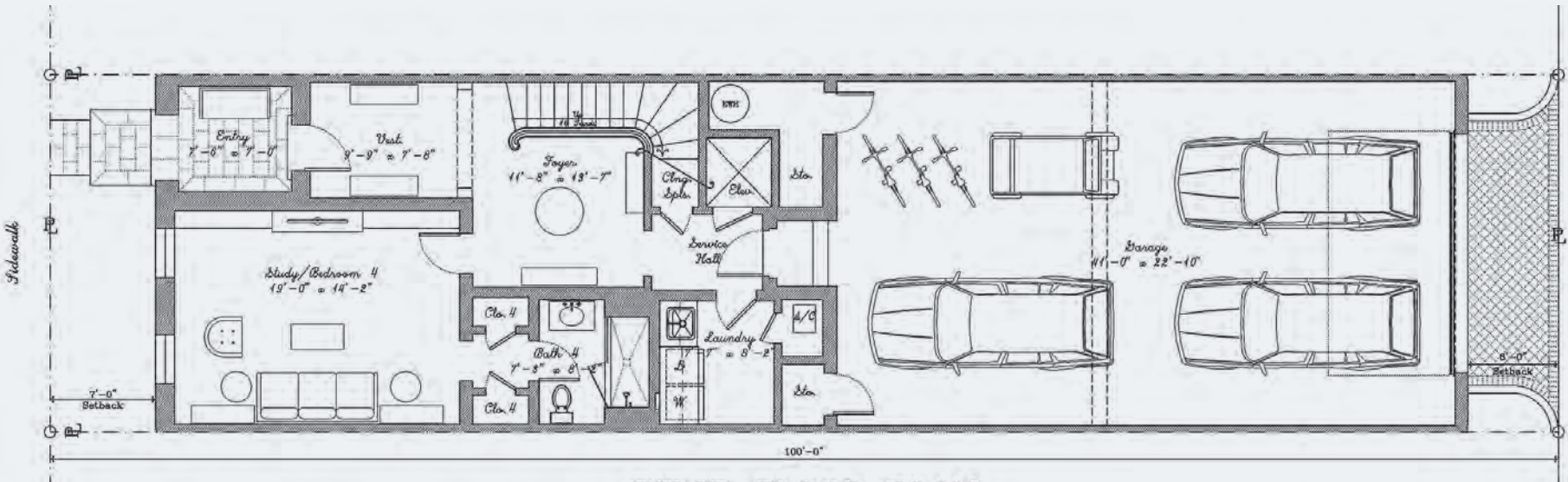
THIRD FLOOR PLAN



SECOND FLOOR PLAN



FIRST FLOOR PLAN





# THE TEAM

*In 2014, Developer Alirio Torrealba and founder of MG Developer Miami fell in love with the classic award-winning town houses Almeria Row, located in the historic Biltmore subdivision. Inspired by Almeria Row's successful vision, Torrealba forged ties with its development team to develop Beatrice Row, a new project of nine magnificent luxury town homes, also located in the historic district.*

*MG Developer Miami is proud and enthusiastic of working with the internationally recognized architectural firm de la Guardia Victoria Architects and Urbanists (DLGV Architects) based in Coral Gables. In addition to having being the recipient of more than ten prestigious design awards, DLGV Architects' luxury residential projects in Florida and The Bahamas have been featured in: Architectural Digest, Home & Design, Period Home, Metropolitan Home, Coastal Living, Veranda, and Southern Living Our team's commitment through Beatrice Row is to offer you the unique opportunity of owning an elegant, luxurious, and beautiful town home, reminiscent of London's and New York's best, in a remarkable location in Miami. Additionally, for us, creativity, art, and design, are of equal value to construction, and the same level of craft dedicated to the production of ideas and drawings by the team will be applied to the supervision of the town houses at the job site.*



## MG DEVELOPER MIAMI LLC

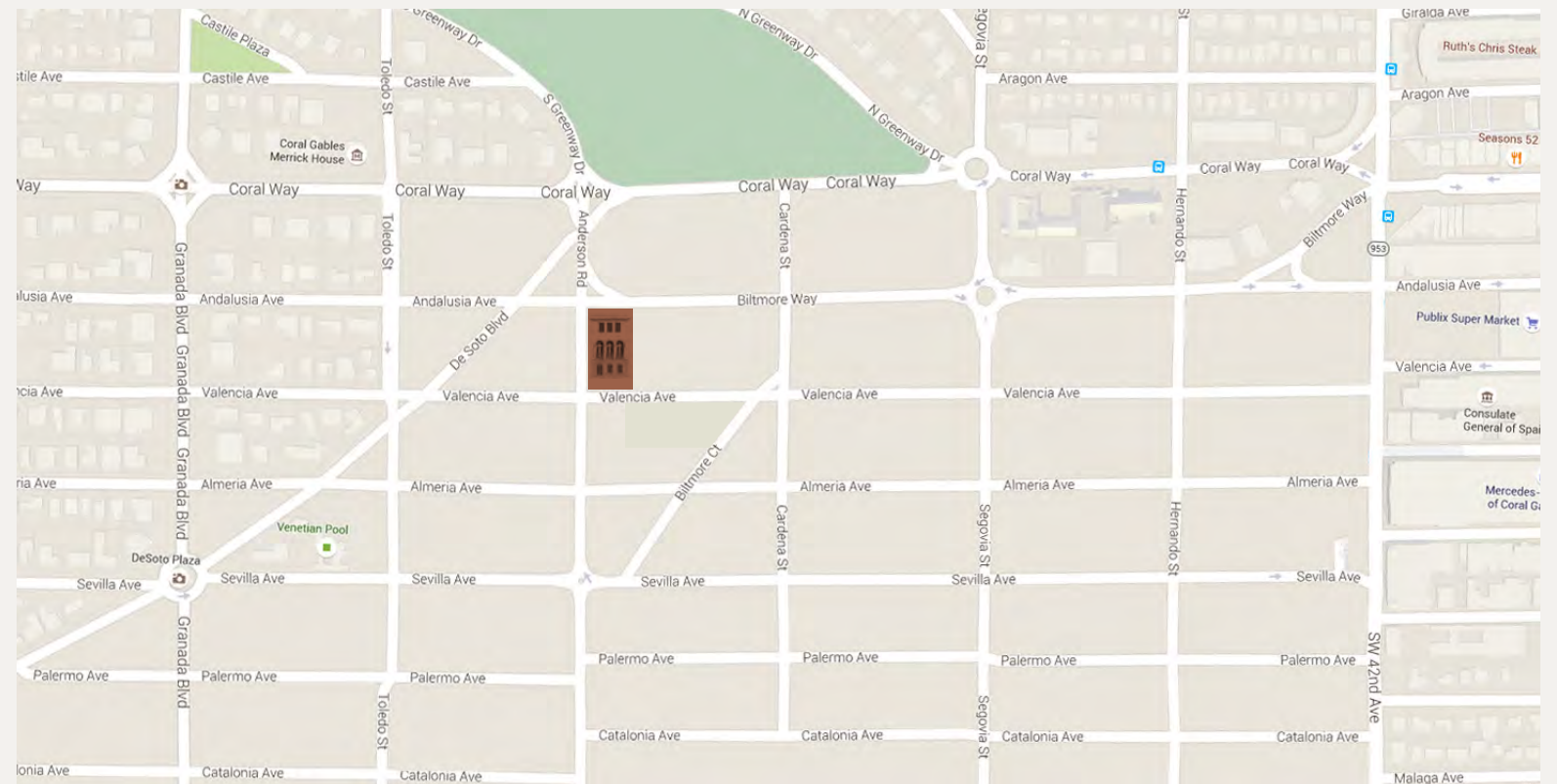
*Alirio Torrealba, Chief Executive Officer & Jenny Ducret, Management Director  
de la Guardia Victoria Architects and Urbanists, Architects*

*Maria Cristina Longo & Fernando Menoyo, Creative Development Team*

*Torre Construction & Development, Builder*



# SITE MAP



## SITE

*2409 Anderson Road  
Coral Gables, FL 33134*