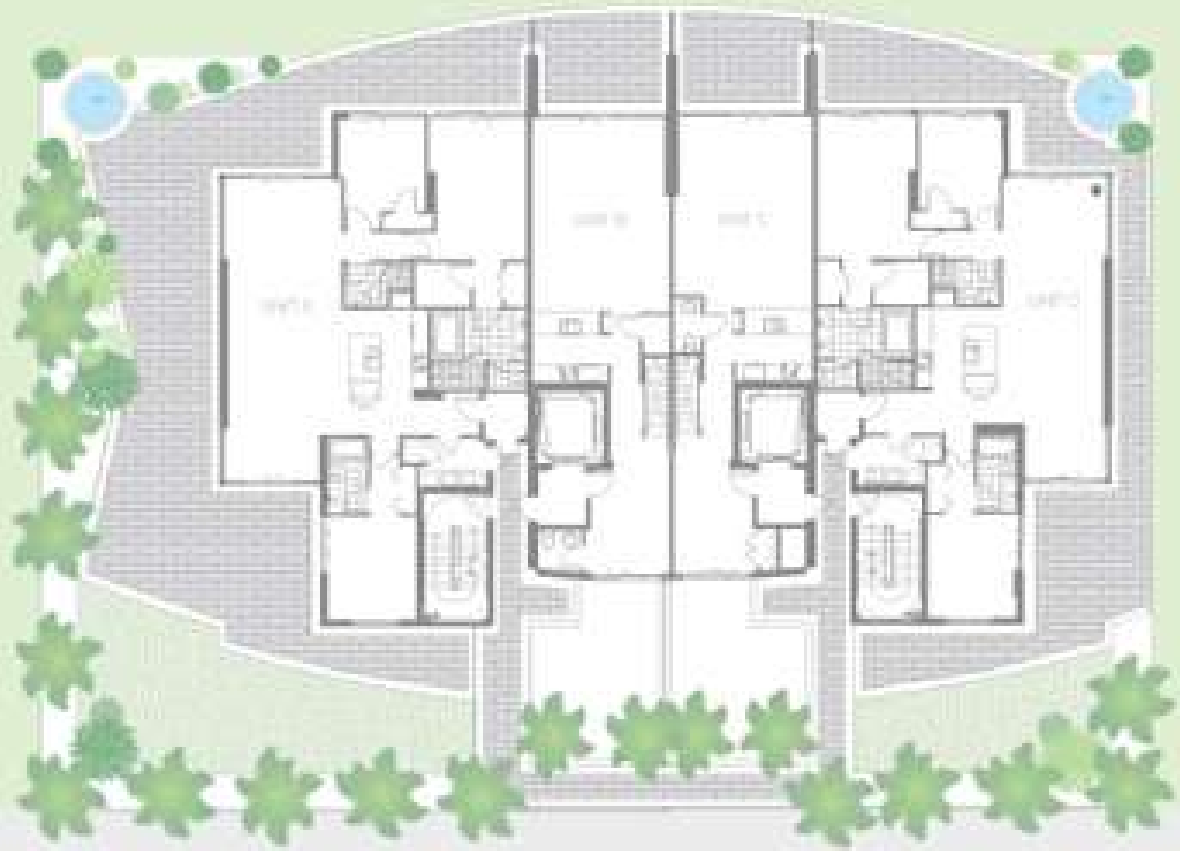
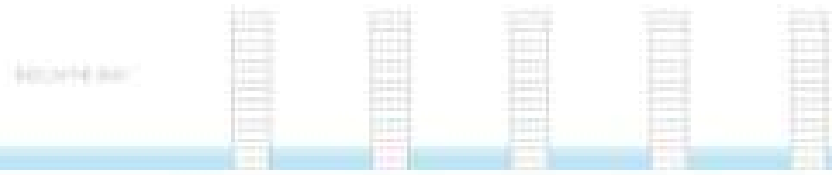


Site Plan

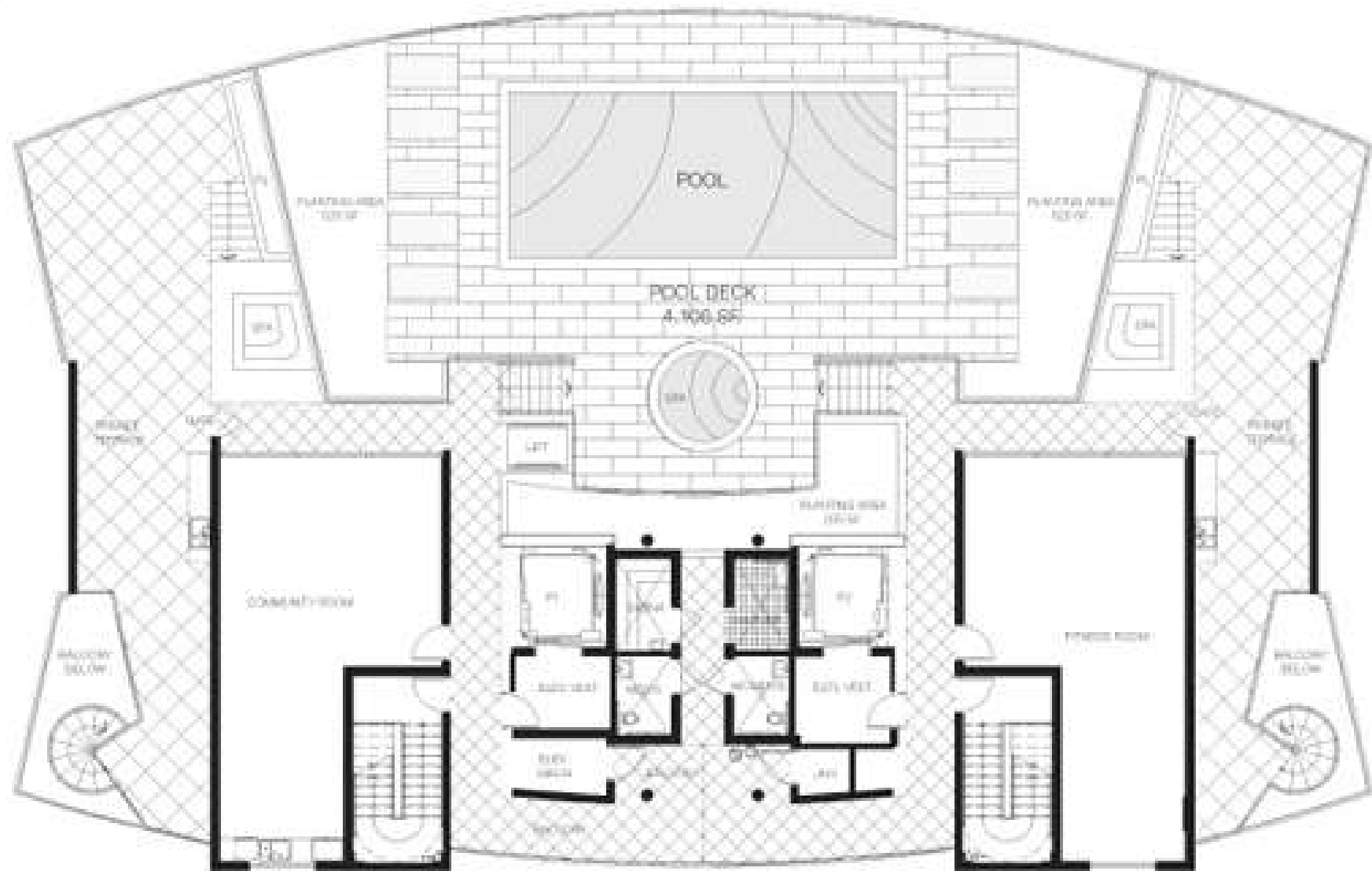
Cielo



Floorplans are representations of actual spaces and not meant to be relied upon as exact dimensions of as built conditions.

ROOF TOP / POOL DECK

Cielo



Floorplans are representations of actual layouts and not meant to be relied upon in exact dimensions of a built construction.

Lanai A (401)

Cielo

3 BEDROOMS / 3 BATHS

Enclosed Area
1,910 SQ FT
177 SQ M

Balcony
3,528 SQ FT
328 SQ M

Total Residence
5,438 SQ FT
505 SQ M



Lanai B (402)

Cielo

2 BEDROOMS / 2.5 BATHS / DEN

Enclosed Area 1,954 SQ FT
182.5Q M

Balcony 648 SQ FT
60 SQ M

Total Residence 2,602 SQ FT
242 SQ M



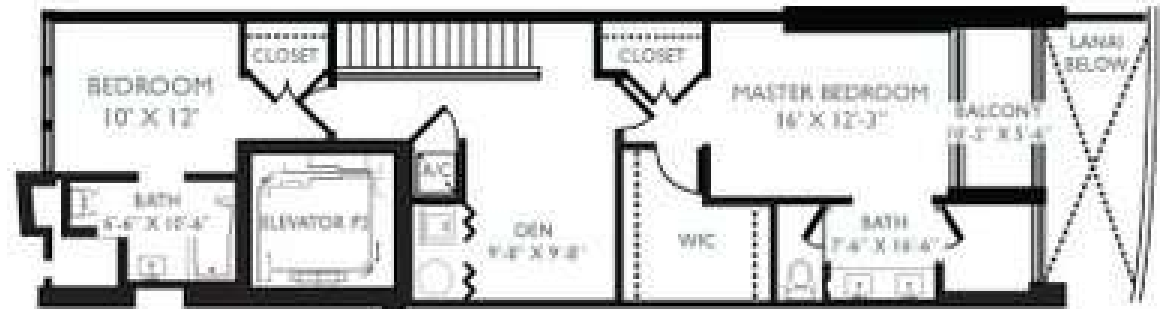
Floorplans are representative of actual layout and not meant to be relied upon as floor dimensions or as built conditions.

Lanai C (403)

Cielo

2 BEDROOMS / 2.5 BATHS / DEN

Enclosed Area	1,884 SQ FT 175 SQ M
Balcony	640 SQ FT 59 SQ M
Total Residence	2,524 SQ FT 234 SQ M



Floorplans are representations of actual layout and not meant to be relied upon as exact dimensions of as built condominiums.

Lanai D (404)

Cielo

3 BEDROOMS / 3 BATHS

Enclosed Area 1,840 SQ FT
171 SQ M

Balcony 1,850 SQ FT
172 SQ M

Total Residence 3,690 SQ FT
343 SQ M



Floorplans are representations of actual layout and not meant to be relied upon as exact dimensions of as built condominiums.

Flat A (01)

Cielo

3 BEDROOMS / 3 BATHS

Enclosed Area
1,910 SQ FT
177 SQ M

Balcony
690 SQ FT
64 SQ M

Total Residence
2,600 SQ FT
242 SQ M



Floorplans are representations of actual layout and not meant to be relied upon as exact dimensions of as built condominiums.

Townhome B (02)

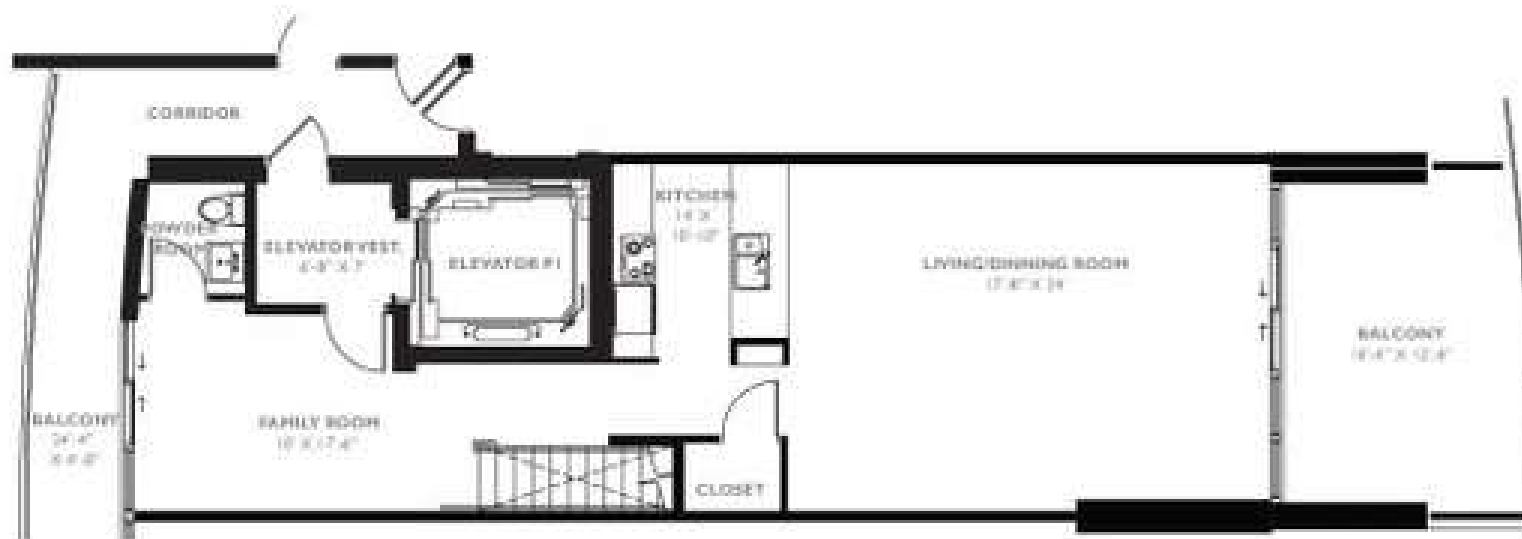
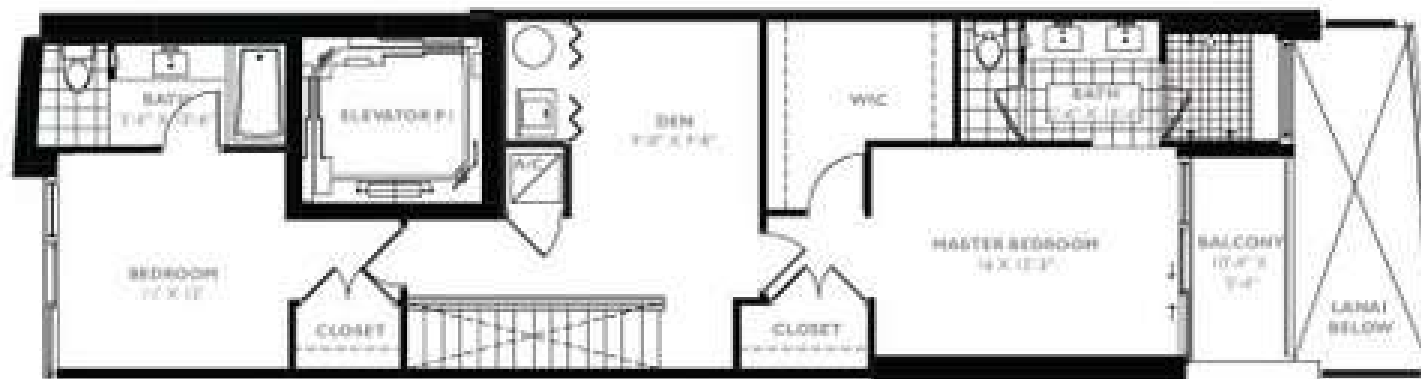
Cielo

2 BEDROOMS / 2.5 BATHS / DEN

Enclosed Area 1,954 SQ FT
182 SQ M

Balcony 268 SQ FT
25 SQ M

Total Residence 2,222 SQ FT
207 SQ M



Townhome C (03)

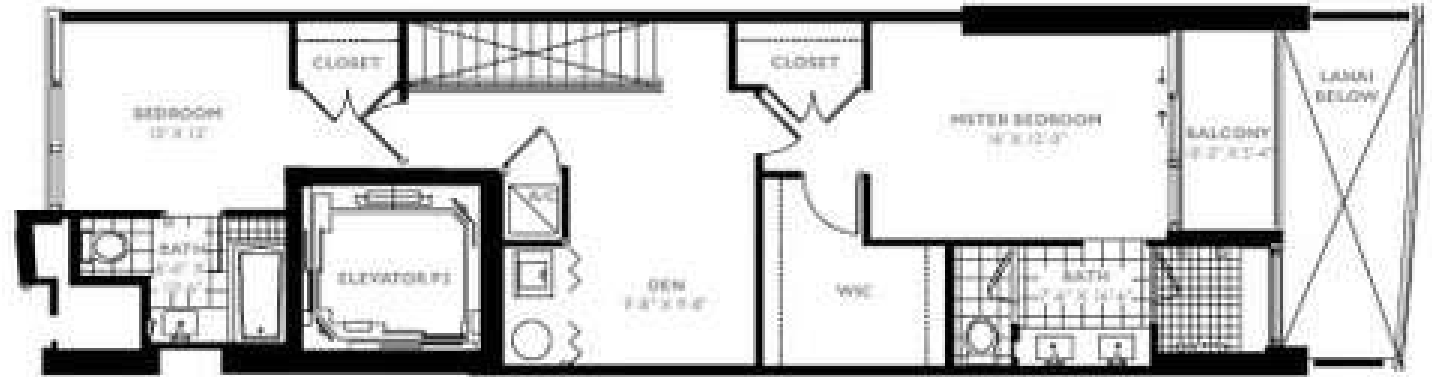
Cielo

2 BEDROOMS / 2.5 BATHS / DEN

Enclosed Area 1,884 SQ FT
175 SQ M

Balcony 268 SQ FT
25 SQ M

Total Residence 2,152 SQ FT
200 SQ M



Floorplans are representations of actual layouts and not meant to be relied upon as exact dimensions of as built condominiums.

Flat D (04)

Cielo

3 BEDROOMS / 3 BATHS

Enclosed Area 1,840 SQ FT
171 SQ M

Balcony 650 SQ FT
60 SQ M

Total Residence 2,490 SQ FT
231 SQ M



Floorplans are representations of actual layout and not meant to be relied upon as exact dimensions of as built condominiums.

PH-A (01)

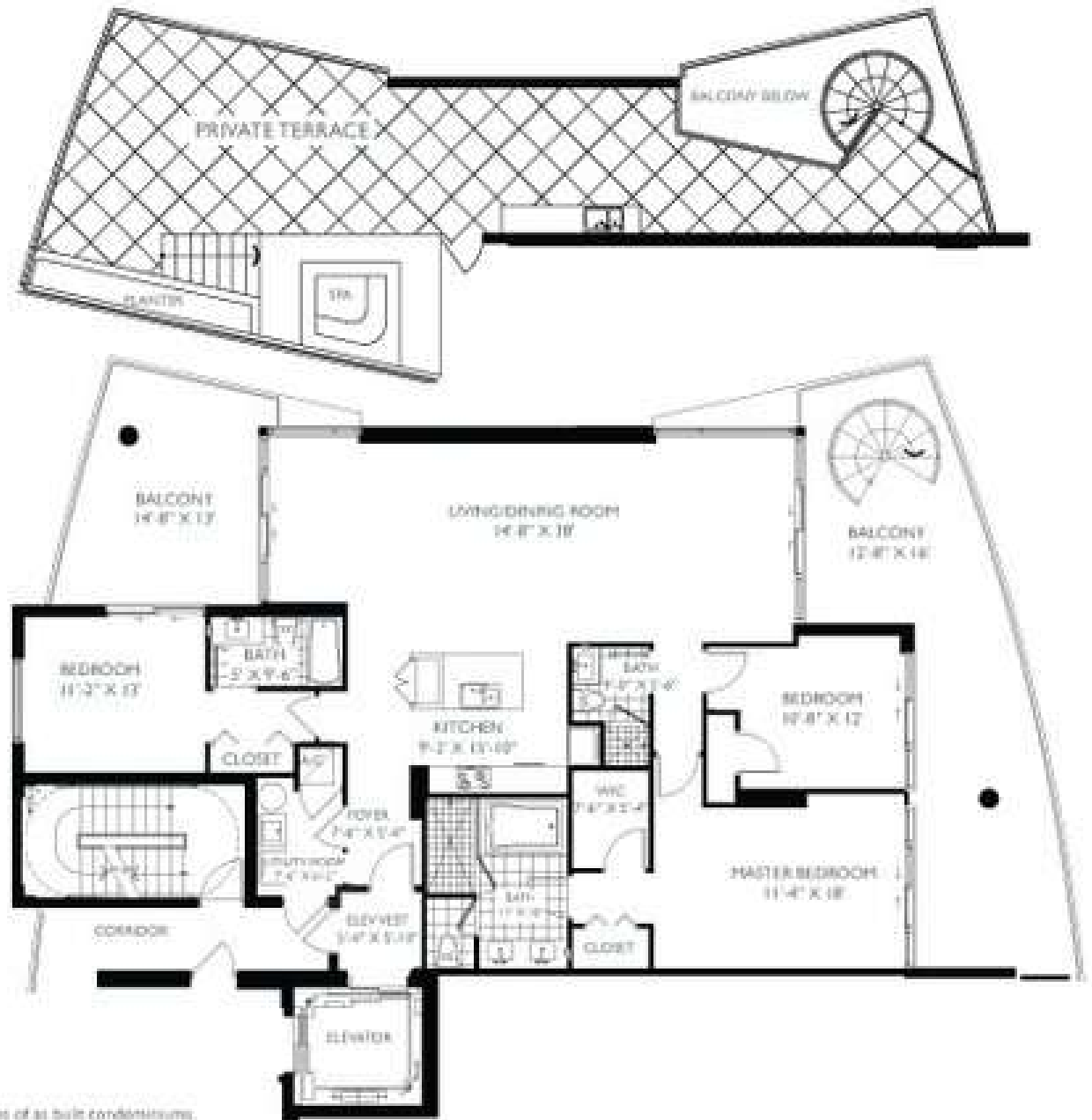
Cielo

3 BEDROOMS / 3 BATHS

Enclosed Area
1,910 SQ FT
177 SQ M

Balcony
1,688 SQ FT
157 SQ M

Total Residence
3,598 SQ FT
334 SQ M



Floorplans are representations of actual layouts and not meant to be relied upon as exact dimensions of as built condominiums.

PH-D (04)

Cielo

3 BEDROOMS / 3 BATHS

Enclosed Area 1,840 SQ FT
171 SQ M

Balcony 1,554 SQ FT
141 SQ M

Total Residence 3,394 SQ FT
315 SQ M



Floorplans are representations of actual layout and not meant to be relied upon as exact dimensions of as built condominiums.