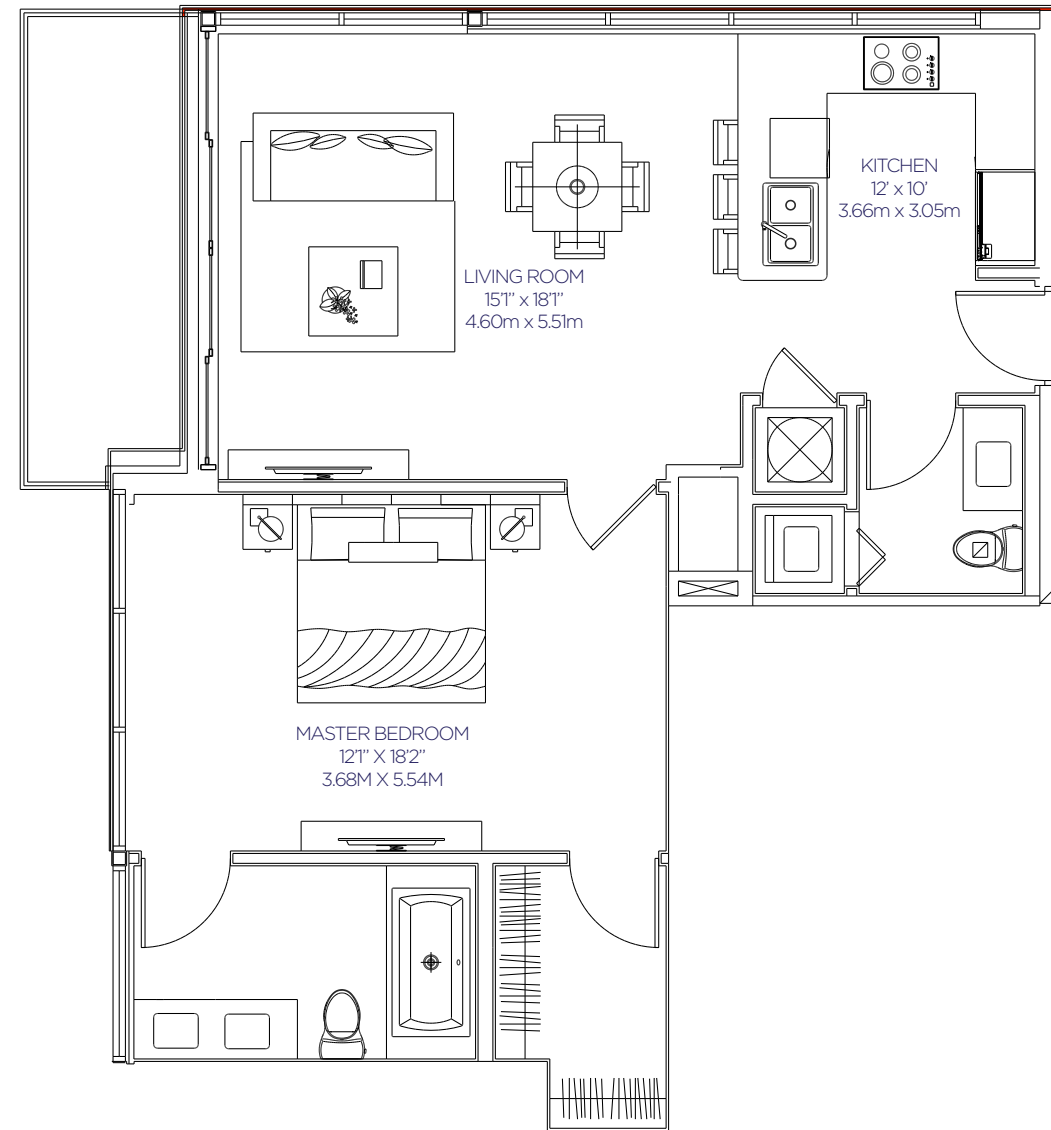


Unit 201

BUENAVISTA Villas

1 Bedroom, 1.5 Bathrooms
Unit 201



	SQF	m ²
Interior	902	83,8
Exterior	95	8,83
Total	997	92,62

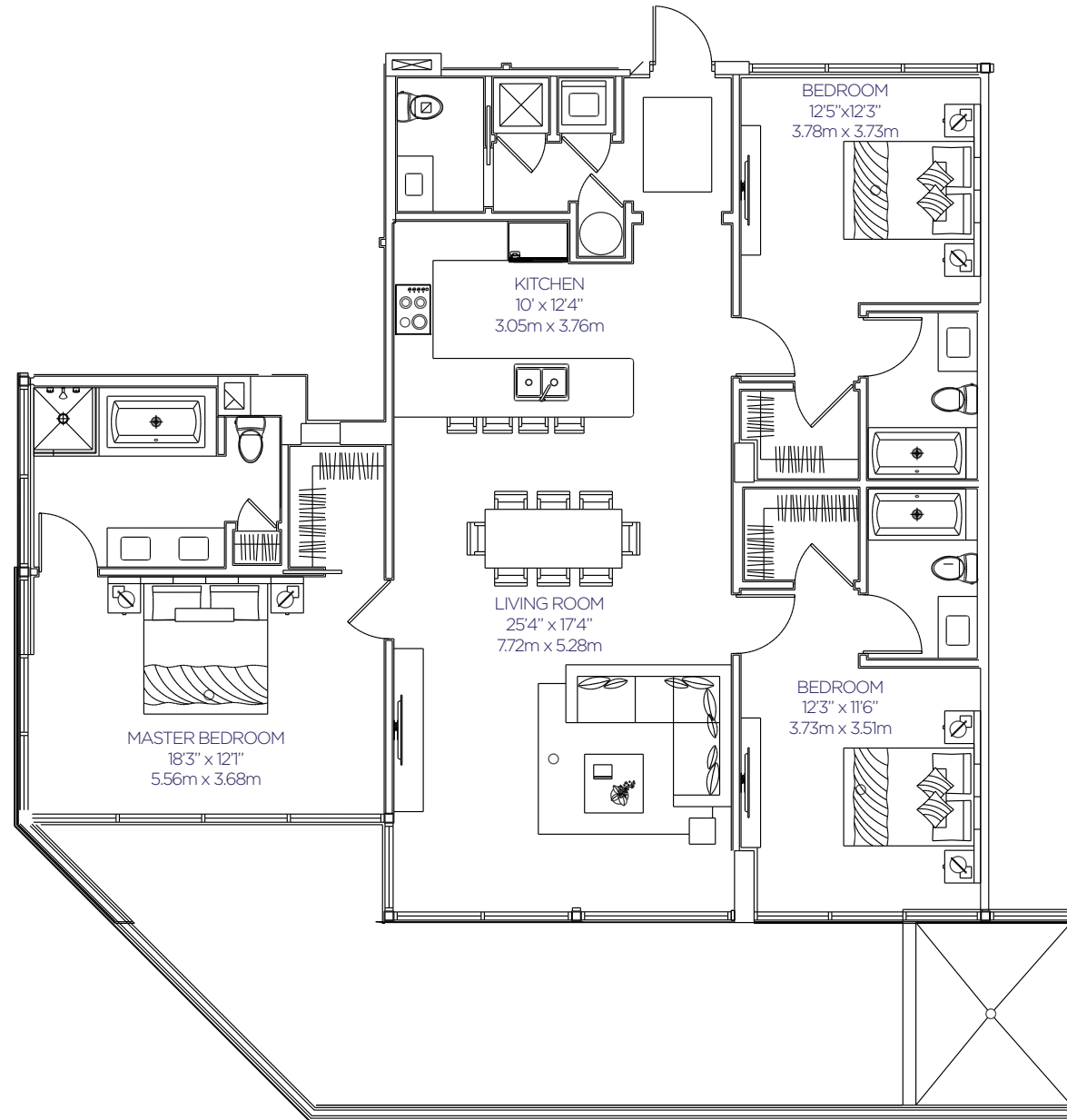


Stated dimensions are measured to the exterior boundaries of the exterior walls and the centerline of interior demising walls and in fact vary from the dimensions that would be determined by using the description and definition of the " Unit" set forth in the Declaration (which generally only includes the interior airspace between the perimeter walls and excludes interior structural components) . For your reference, the area of the Unit, determined in accordance with those defined unit boundaries, is set forth in Exhibit " 3" to the Declaration. Note that measurements of rooms set forth on this floor plan are generally taken at the greatest points of each given room (as if the room were a perfect rectangle) , without regard for any cutouts. Accordingly, the area of the actual room will typically be smaller than the product obtained by multiplying the stated length times width. All dimensions are approximate and may vary with actual construction, and all floor plans and development plans are subject to change.

Unit 202

BUENAVISTA Villas

3 Bedrooms, 3.5 Bathrooms
Unit 202



	SQF	m ²
Interior	1,764	163,88
Exterior	424	39,39
Total	2,188	203,27

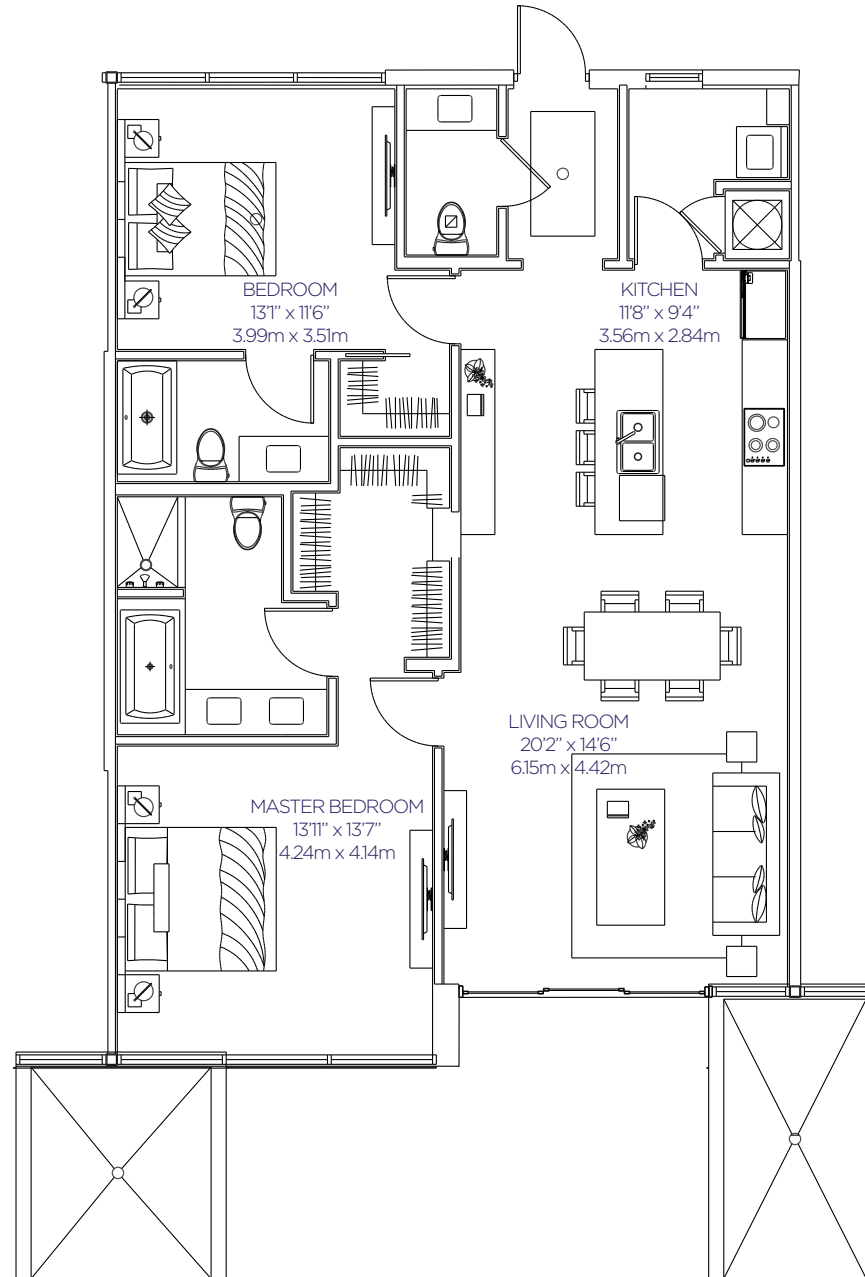


Stated dimensions are measured to the exterior boundaries of the exterior walls and the centerline of interior demising walls and in fact vary from the dimensions that would be determined by using the description and definition of the " Unit" set forth in the Declaration (which generally only includes the interior airspace between the perimeter walls and excludes interior structural components) . For your reference, the area of the Unit, determined in accordance with those defined unit boundaries, is set forth in Exhibit " 3" to the Declaration. Note that measurements of rooms set forth on this floor plan are generally taken at the greatest points of each given room (as if the room were a perfect rectangle) , without regard for any cutouts. Accordingly, the area of the actual room will typically be smaller than the product obtained by multiplying the stated length times width. All dimensions are approximate and may vary with actual construction, and all floor plans and development plans are subject to change.

Unit 203

BUENAVISTA Villas

2 Bedrooms, 2.5 Bathrooms
Unit 203



	SQF	m ²
Interior	1,283	119,19
Exterior	232	21,55
Total	1,515	140,75

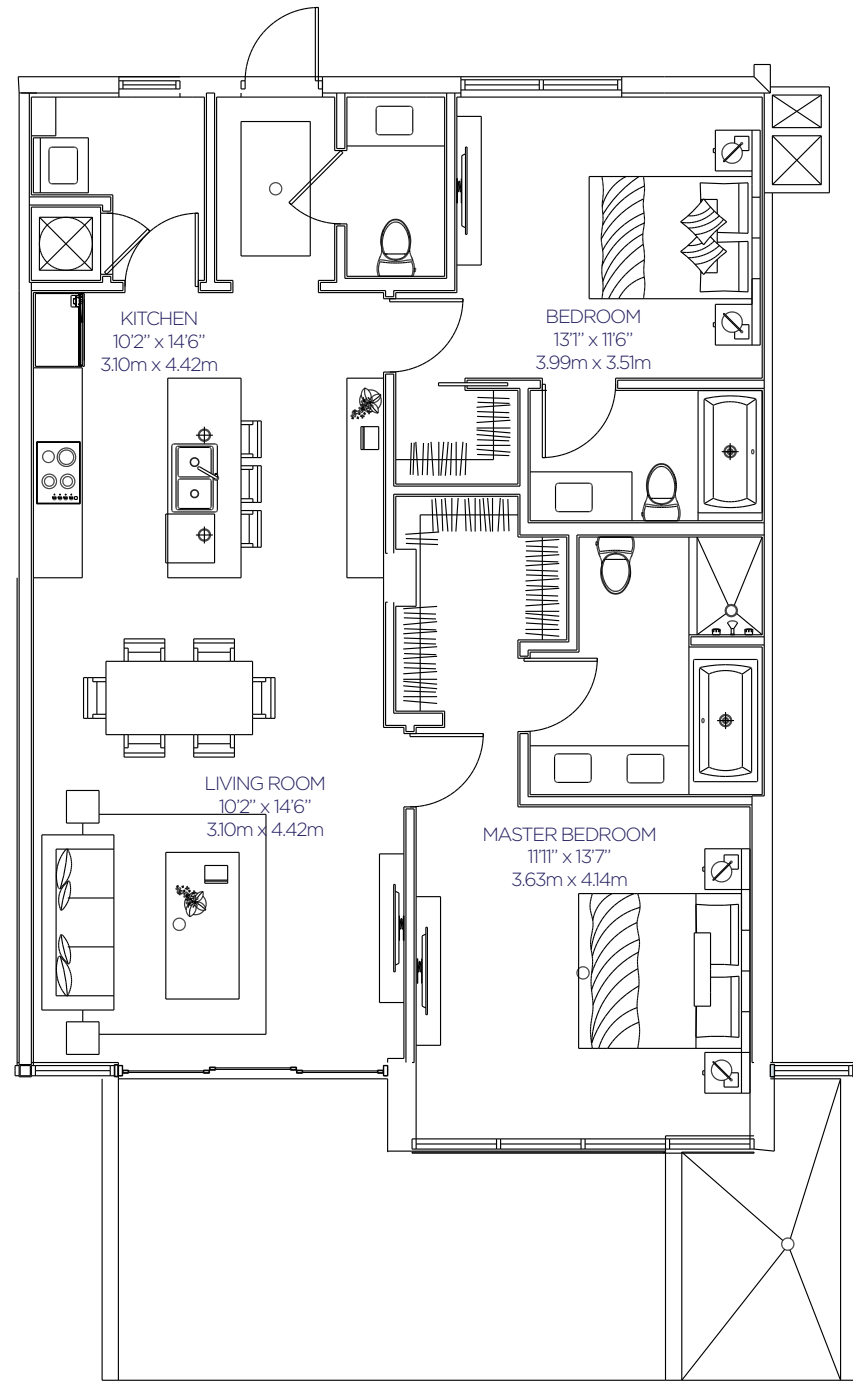


Stated dimensions are measured to the exterior boundaries of the exterior walls and the centerline of interior demising walls and in fact vary from the dimensions that would be determined by using the description and definition of the " Unit" set forth in the Declaration (which generally only includes the interior airspace between the perimeter walls and excludes interior structural components) . For your reference, the area of the Unit, determined in accordance with those defined unit boundaries, is set forth in Exhibit " 3" to the Declaration. Note that measurements of rooms set forth on this floor plan are generally taken at the greatest points of each given room (as if the room were a perfect rectangle) , without regard for any cutouts. Accordingly, the area of the actual room will typically be smaller than the product obtained by multiplying the stated length times width. All dimensions are approximate and may vary with actual construction, and all floor plans and development plans are subject to change.

Unit 204

BUENAVISTA Villas

2 Bedrooms, 2.5 Bathrooms
Unit 204



	SQF	m ²
Interior	1,289	119,75
Exterior	242	22,48
Total	1,531	142,23

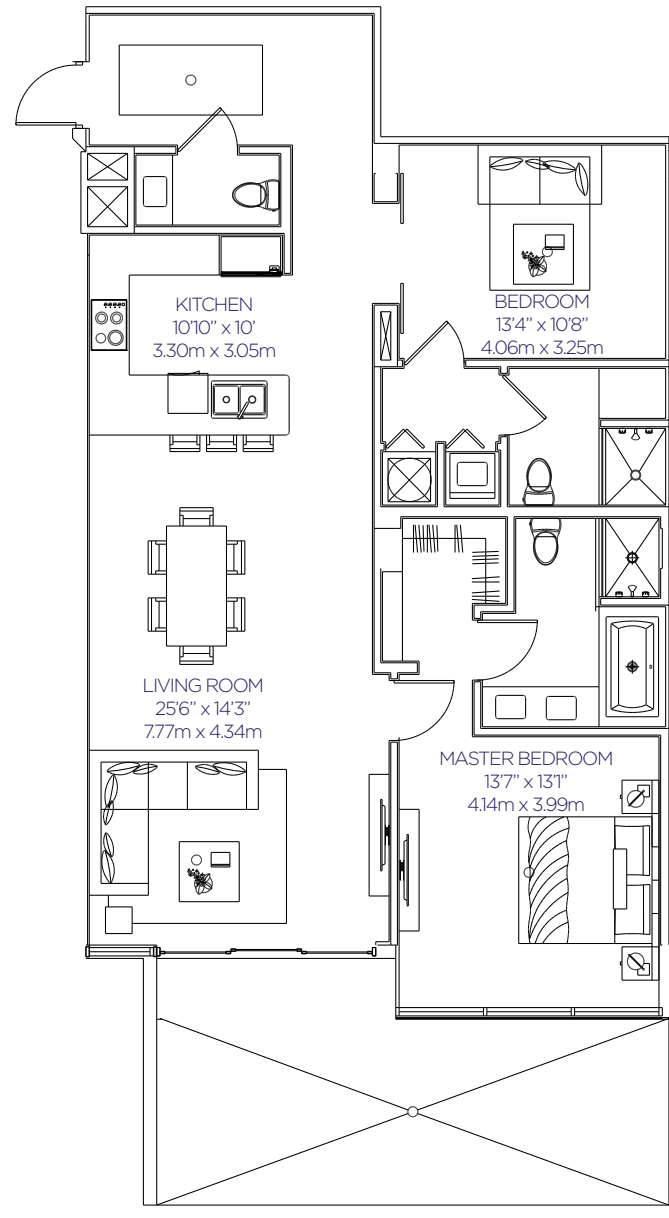


Stated dimensions are measured to the exterior boundaries of the exterior walls and the centerline of interior demising walls and in fact vary from the dimensions that would be determined by using the description and definition of the " Unit" set forth in the Declaration (which generally only includes the interior airspace between the perimeter walls and excludes interior structural components) . For your reference, the area of the Unit, determined in accordance with those defined unit boundaries, is set forth in Exhibit " 3" to the Declaration. Note that measurements of rooms set forth on this floor plan are generally taken at the greatest points of each given room (as if the room were a perfect rectangle) , without regard for any cutouts. Accordingly, the area of the actual room will typically be smaller than the product obtained by multiplying the stated length times width. All dimensions are approximate and may vary with actual construction, and all floor plans and development plans are subject to change.

Unit 205

BUENAVISTA Villas

1 Bedroom + Den, 1.5 Bathrooms
Unit 205



	SQF	m ²
Interior	1,373	127,56
Exterior	272	25,27
Total	1,645	152,83

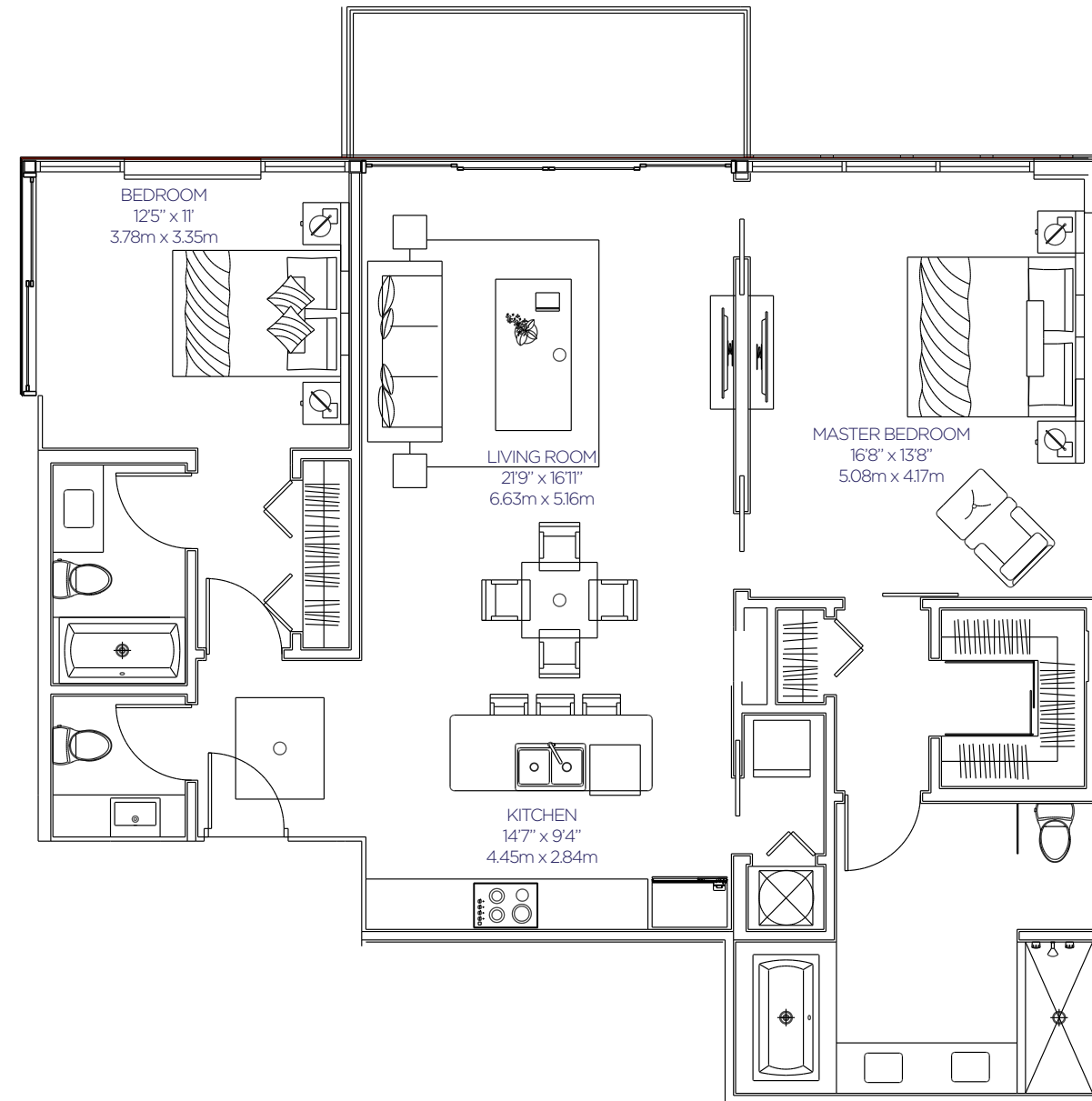


Stated dimensions are measured to the exterior boundaries of the exterior walls and the centerline of interior demising walls and in fact vary from the dimensions that would be determined by using the description and definition of the " Unit" set forth in the Declaration (which generally only includes the interior airspace between the perimeter walls and excludes interior structural components) . For your reference, the area of the Unit, determined in accordance with those defined unit boundaries, is set forth in Exhibit " 3" to the Declaration. Note that measurements of rooms set forth on this floor plan are generally taken at the greatest points of each given room (as if the room were a perfect rectangle) , without regard for any cutouts. Accordingly, the area of the actual room will typically be smaller than the product obtained by multiplying the stated length times width. All dimensions are approximate and may vary with actual construction, and all floor plans and development plans are subject to change.

Unit 206

BUENAVISTA Villas

2 Bedrooms, 2.5 Bathrooms
Unit 206



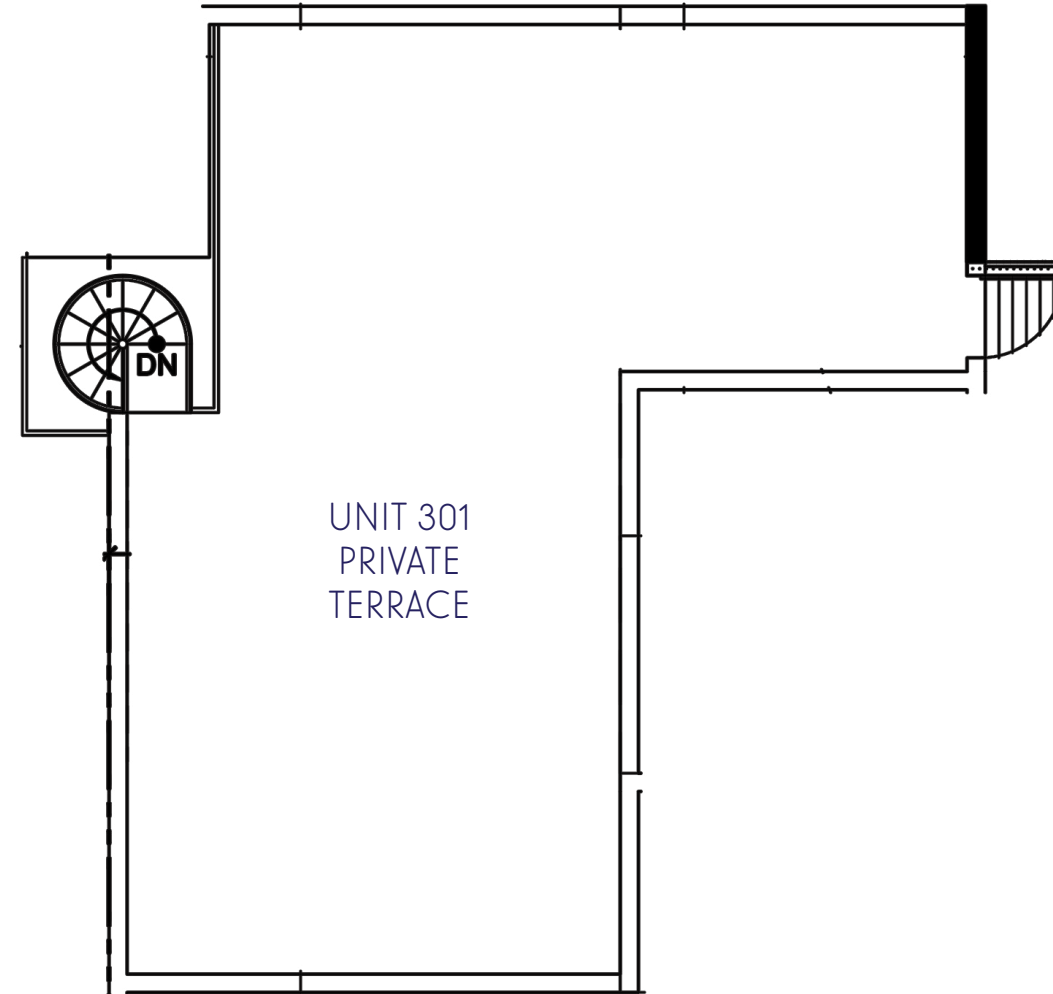
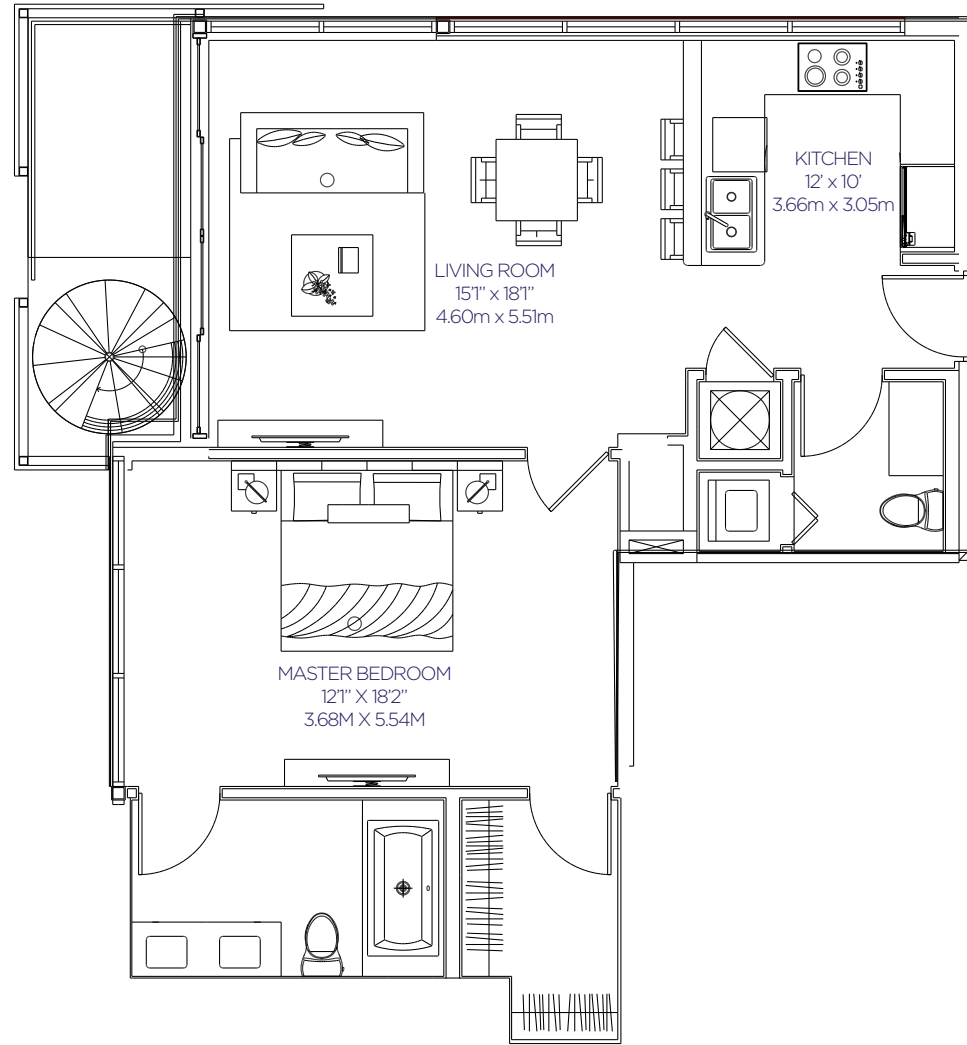
	SQF	m ²
Interior	1,438	133,59
Exterior	176	16,35
Total	1,614	149,95



Stated dimensions are measured to the exterior boundaries of the exterior walls and the centerline of interior demising walls and in fact vary from the dimensions that would be determined by using the description and definition of the " Unit" set forth in the Declaration (which generally only includes the interior airspace between the perimeter walls and excludes interior structural components) . For your reference, the area of the Unit, determined in accordance with those defined unit boundaries, is set forth in Exhibit " 3" to the Declaration. Note that measurements of rooms set forth on this floor plan are generally taken at the greatest points of each given room (as if the room were a perfect rectangle) , without regard for any cutouts. Accordingly, the area of the actual room will typically be smaller than the product obtained by multiplying the stated length times width. All dimensions are approximate and may vary with actual construction, and all floor plans and development plans are subject to change.

Unit 301

BUENA VISTA Villas



1 Bedroom, 1.5 Bathrooms
Unit 301

	SQF	m ²
Interior	902	83,80
Exterior	909	84,45
Total	1,811	168,25

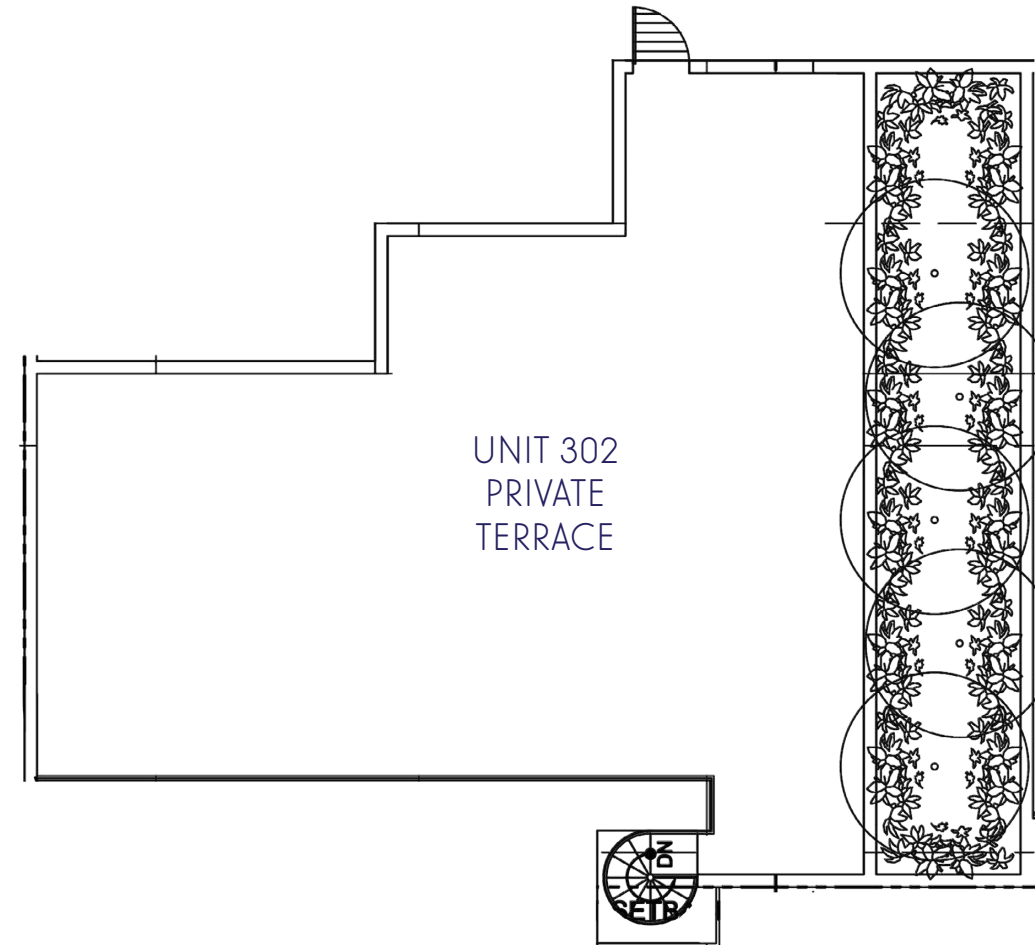
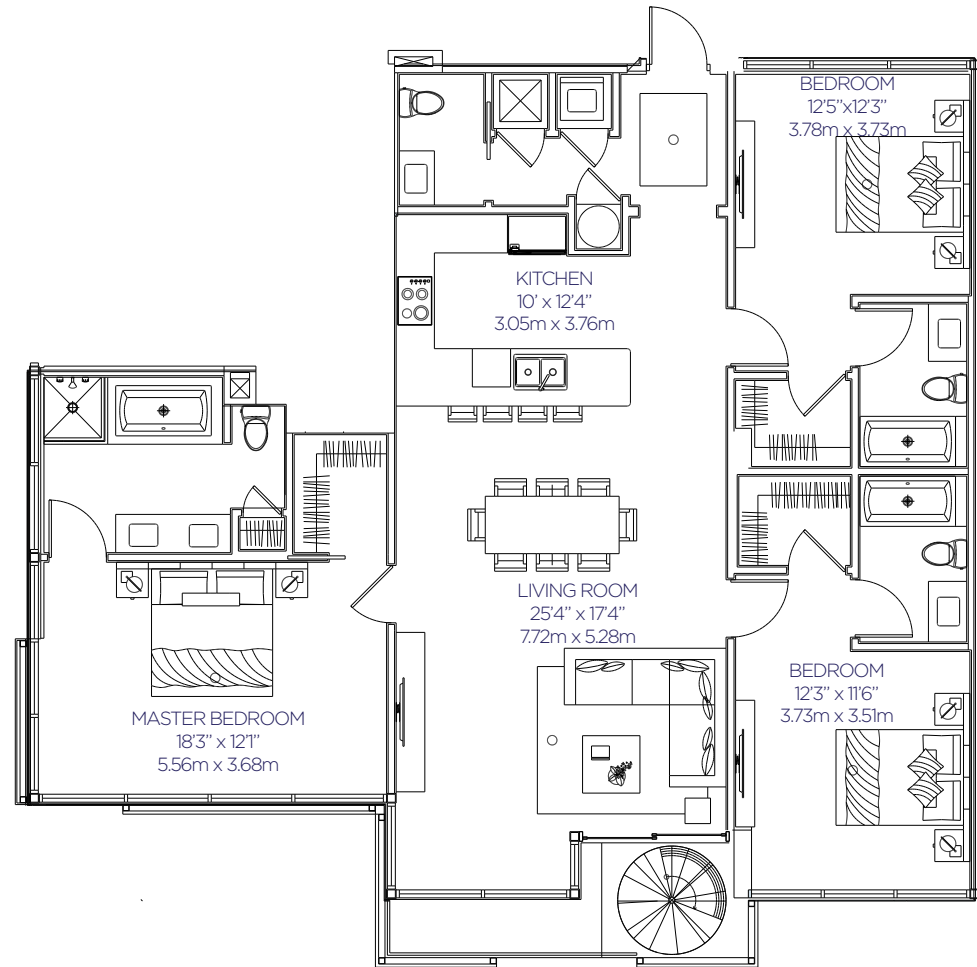


Stated dimensions are measured to the exterior boundaries of the exterior walls and the centerline of interior demising walls and in fact vary from the dimensions that would be determined by using the description and definition of the " Unit" set forth in the Declaration (which generally only includes the interior airspace between the perimeter walls and excludes interior structural components) . For your reference, the area of the Unit, determined in accordance with those defined unit boundaries, is set forth in Exhibit " 3" to the Declaration. Note that measurements of rooms set forth on this floor plan are generally taken at the greatest points of each given room (as if the room were a perfect rectangle) , without regard for any cutouts. Accordingly, the area of the actual room will typically be smaller than the product obtained by multiplying the stated length times width. All dimensions are approximate and may vary with actual construction, and all floor plans and development plans are subject to change.

Unit 302

BUENAVISTA Villas

3 Bedrooms, 3.5 Bathrooms
Unit 302



	SQF	m ²
Interior	1,764	163,88
Exterior	1,140	105,91
Total	2,904	269,79

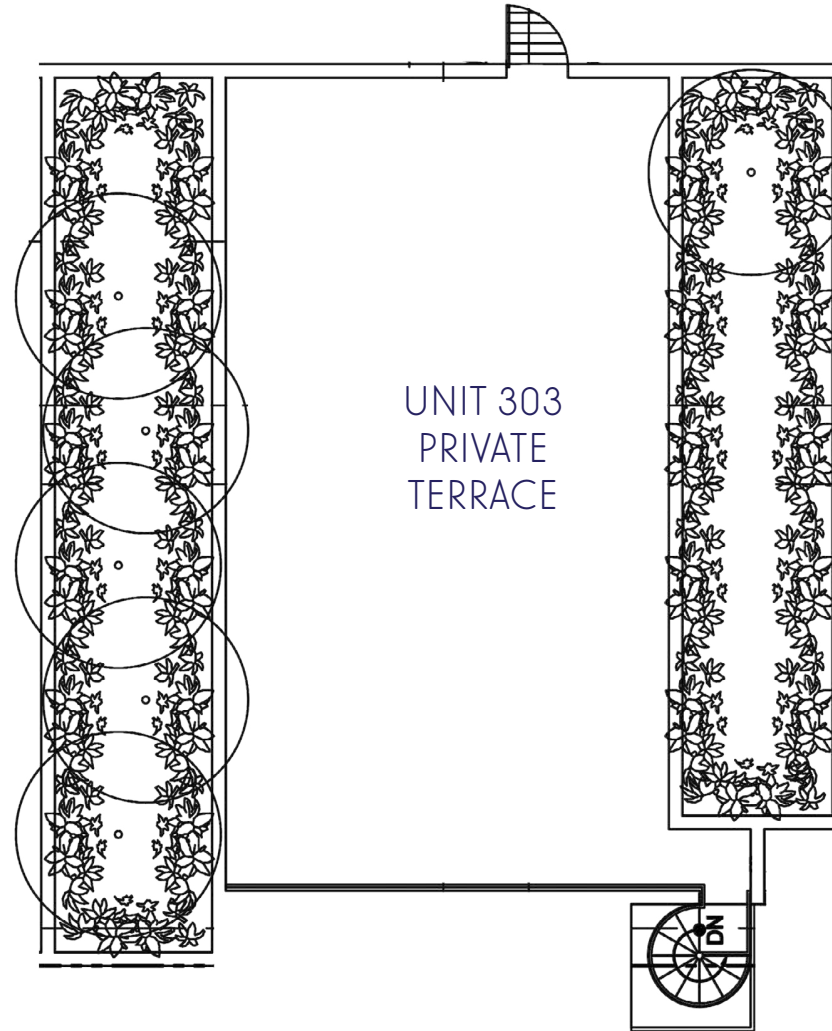
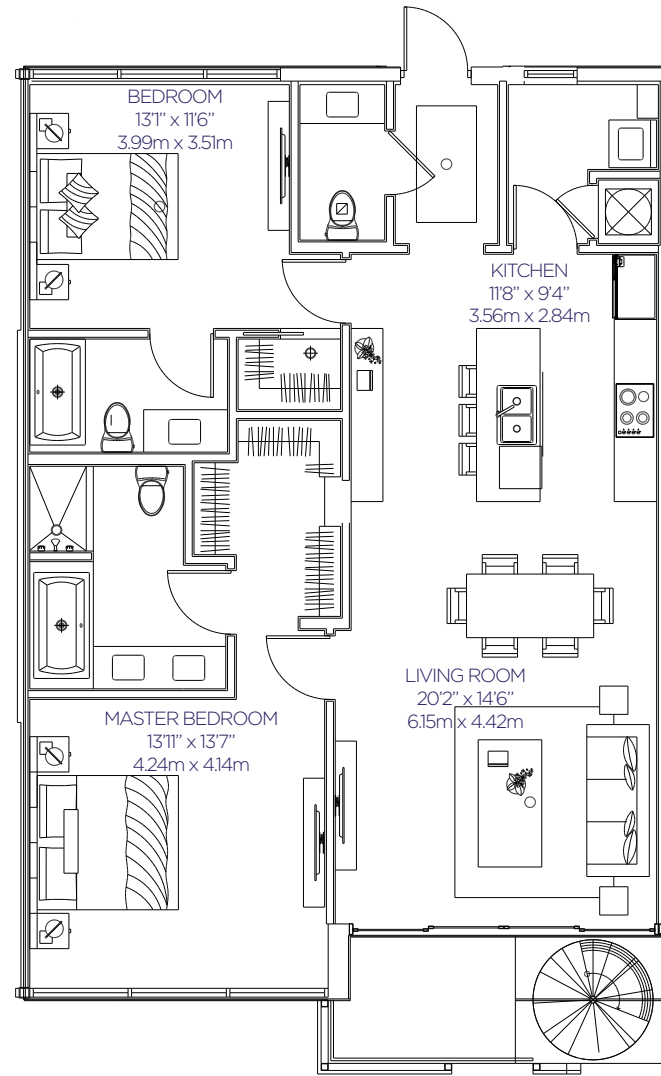


Stated dimensions are measured to the exterior boundaries of the exterior walls and the centerline of interior demising walls and in fact vary from the dimensions that would be determined by using the description and definition of the " Unit" set forth in the Declaration (which generally only includes the interior airspace between the perimeter walls and excludes interior structural components) . For your reference, the area of the Unit, determined in accordance with those defined unit boundaries, is set forth in Exhibit " 3" to the Declaration. Note that measurements of rooms set forth on this floor plan are generally taken at the greatest points of each given room (as if the room were a perfect rectangle) , without regard for any cutouts. Accordingly, the area of the actual room will typically be smaller than the product obtained by multiplying the stated length times width. All dimensions are approximate and may vary with actual construction, and all floor plans and development plans are subject to change.

Unit 303

BUENAVISTA Villas

2 Bedrooms, 2.5 Bathrooms
Unit 303



	SQF	m ²
Interior	1,283	119,19
Exterior	1,022	94,95
Total	2,305	214,14

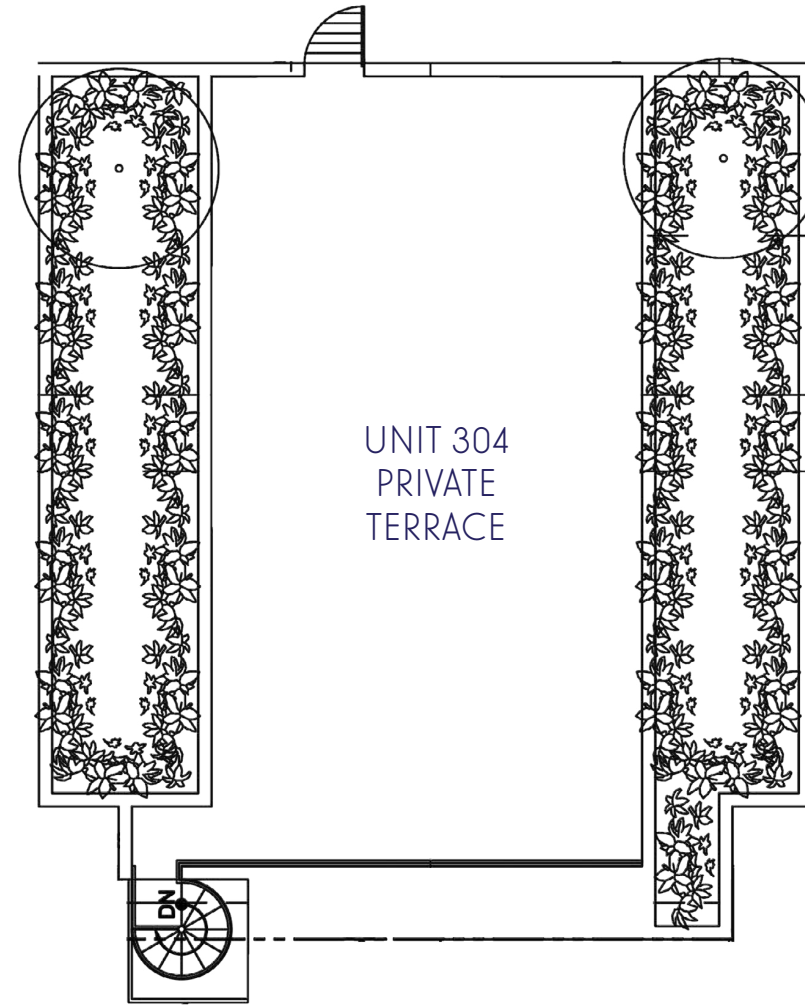
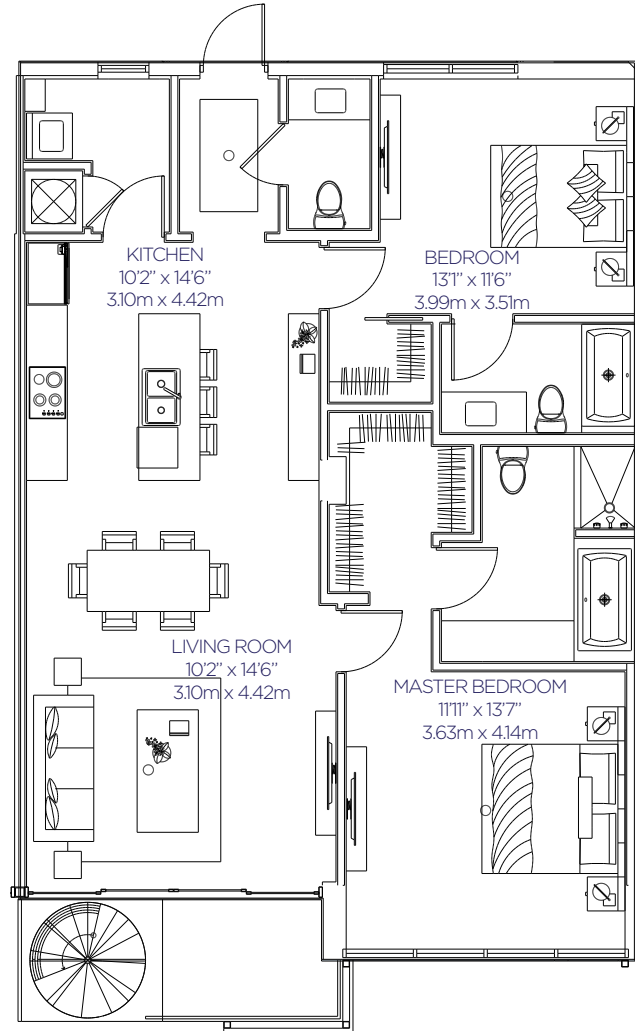


Stated dimensions are measured to the exterior boundaries of the exterior walls and the centerline of interior demising walls and in fact vary from the dimensions that would be determined by using the description and definition of the " Unit" set forth in the Declaration (which generally only includes the interior airspace between the perimeter walls and excludes interior structural components) . For your reference, the area of the Unit, determined in accordance with those defined unit boundaries, is set forth in Exhibit " 3" to the Declaration. Note that measurements of rooms set forth on this floor plan are generally taken at the greatest points of each given room (as if the room were a perfect rectangle) , without regard for any cutouts. Accordingly, the area of the actual room will typically be smaller than the product obtained by multiplying the stated length times width. All dimensions are approximate and may vary with actual construction, and all floor plans and development plans are subject to change.

Unit 304

BUENAVISTA Villas

2 Bedrooms, 2.5 Bathrooms
Unit 304



	SQF	m ²
Interior	1,289	119,75
Exterior	1,022	94,95
Total	2,311	214,70

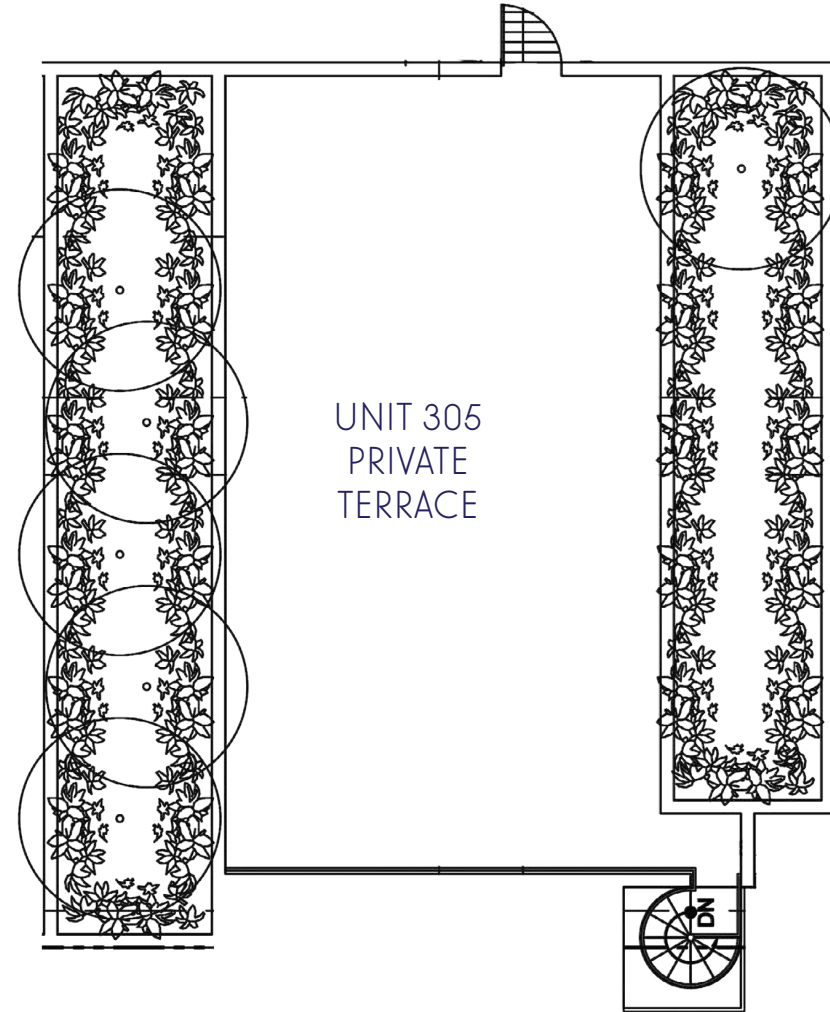
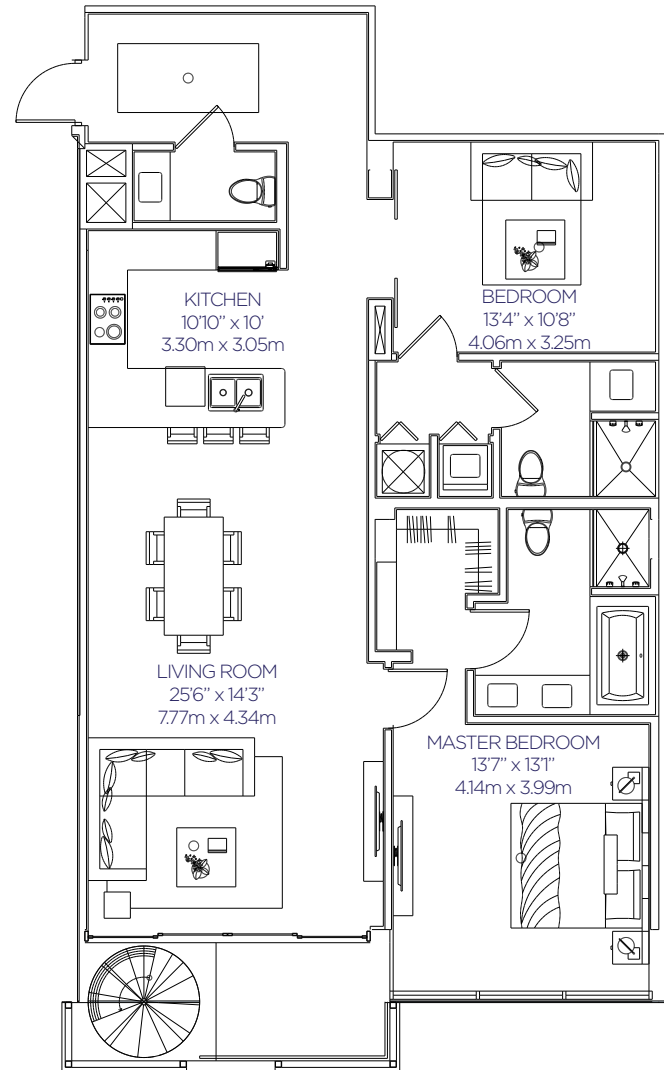


Stated dimensions are measured to the exterior boundaries of the exterior walls and the centerline of interior demising walls and in fact vary from the dimensions that would be determined by using the description and definition of the " Unit" set forth in the Declaration (which generally only includes the interior airspace between the perimeter walls and excludes interior structural components) . For your reference, the area of the Unit, determined in accordance with those defined unit boundaries, is set forth in Exhibit " 3" to the Declaration. Note that measurements of rooms set forth on this floor plan are generally taken at the greatest points of each given room (as if the room were a perfect rectangle) , without regard for any cutouts. Accordingly, the area of the actual room will typically be smaller than the product obtained by multiplying the stated length times width. All dimensions are approximate and may vary with actual construction, and all floor plans and development plans are subject to change.

Unit 305

BUENAVISTA Villas

1 Bedroom + Den, 1.5 Bathrooms
Unit 305



	SQF	m ²
Interior	1,373	127,56
Exterior	1,034	96,06
Total	2,407	223,62

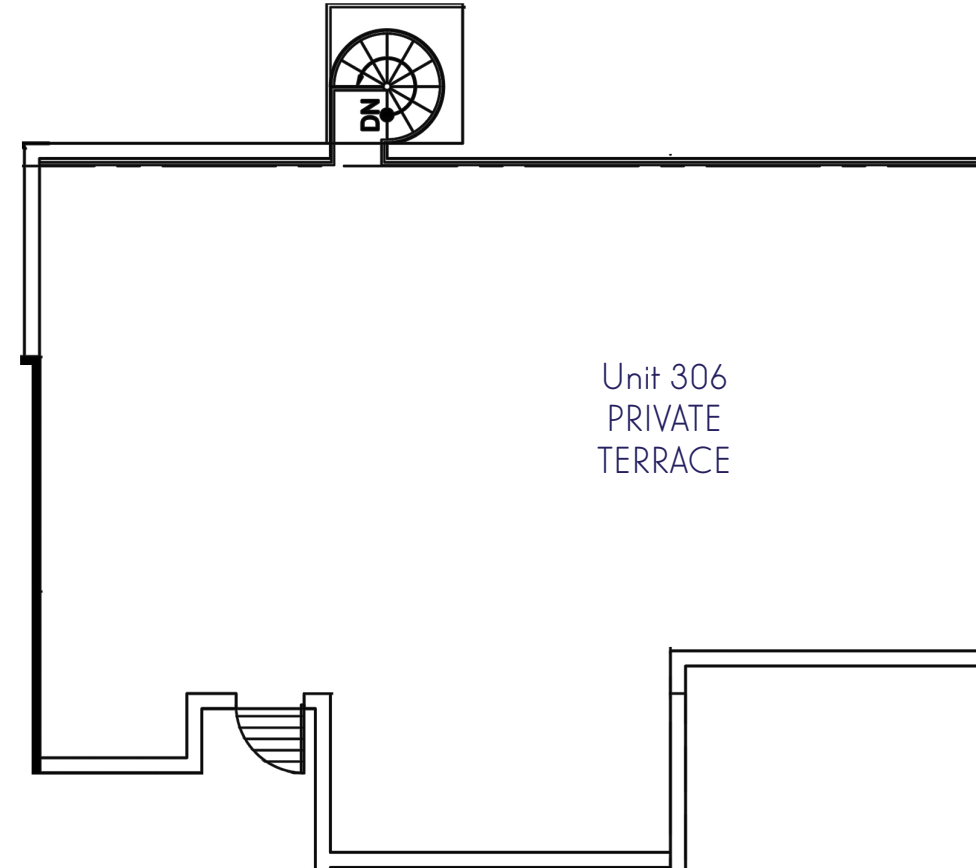
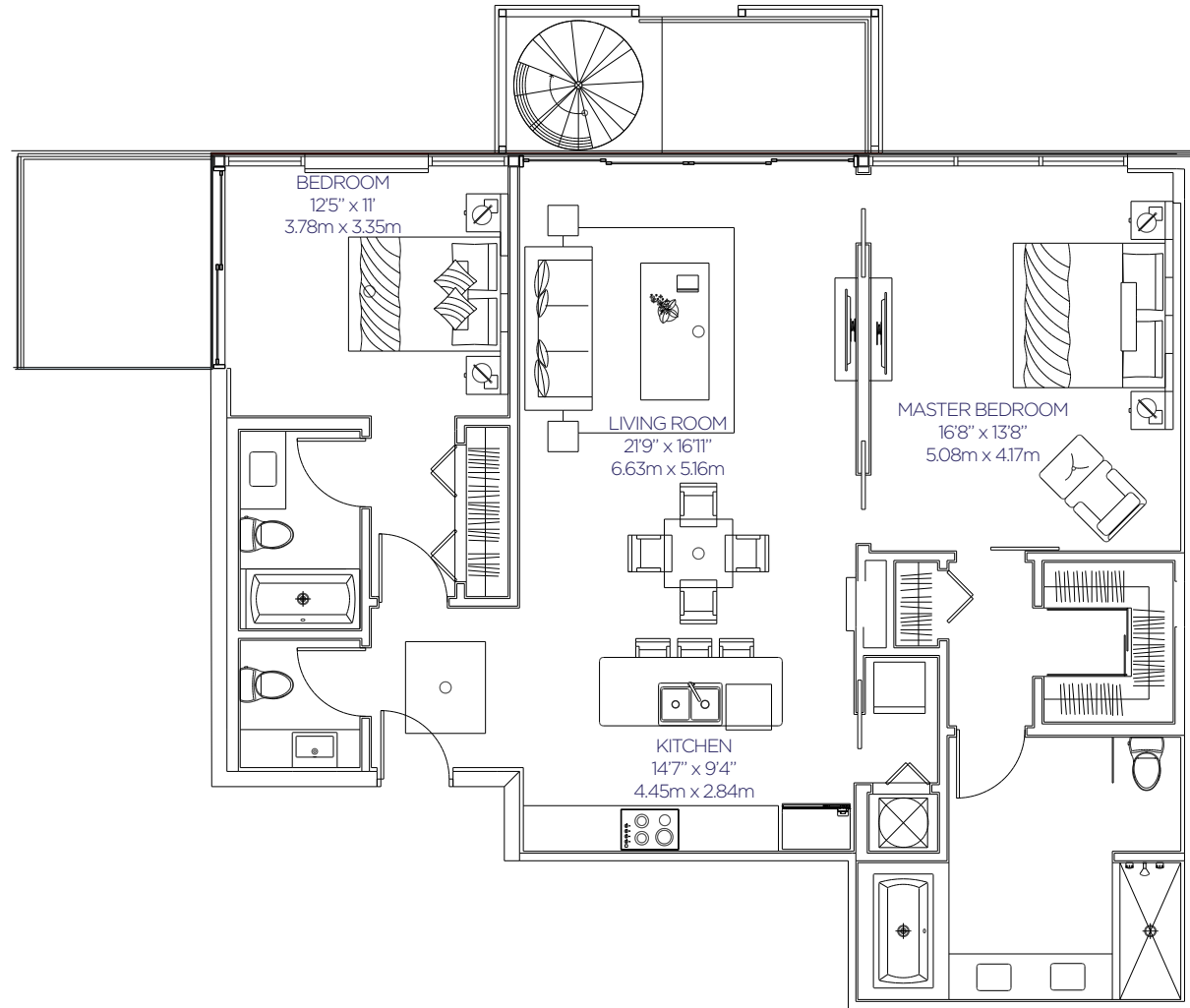


Stated dimensions are measured to the exterior boundaries of the exterior walls and the centerline of interior demising walls and in fact vary from the dimensions that would be determined by using the description and definition of the " Unit" set forth in the Declaration (which generally only includes the interior airspace between the perimeter walls and excludes interior structural components) . For your reference, the area of the Unit, determined in accordance with those defined unit boundaries, is set forth in Exhibit " 3" to the Declaration. Note that measurements of rooms set forth on this floor plan are generally taken at the greatest points of each given room (as if the room were a perfect rectangle) , without regard for any cutouts. Accordingly, the area of the actual room will typically be smaller than the product obtained by multiplying the stated length times width. All dimensions are approximate and may vary with actual construction, and all floor plans and development plans are subject to change.

Unit 306

BUENAVISTA Villas

2 Bedrooms, 2.5 Bathrooms
Unit 306



	SQF	m ²
Interior	1,438	133,59
Exterior	1,447	134,43
Total	2,885	268,03



Stated dimensions are measured to the exterior boundaries of the exterior walls and the centerline of interior demising walls and in fact vary from the dimensions that would be determined by using the description and definition of the " Unit" set forth in the Declaration (which generally only includes the interior airspace between the perimeter walls and excludes interior structural components) . For your reference, the area of the Unit, determined in accordance with those defined unit boundaries, is set forth in Exhibit " 3" to the Declaration. Note that measurements of rooms set forth on this floor plan are generally taken at the greatest points of each given room (as if the room were a perfect rectangle) , without regard for any cutouts. Accordingly, the area of the actual room will typically be smaller than the product obtained by multiplying the stated length times width. All dimensions are approximate and may vary with actual construction, and all floor plans and development plans are subject to change.